

Butler's

thoughtful estate agency



Tennyson Avenue, New Malden, KT3 6LY
£2,350 Per month

Butler's
thoughtful estate agency

3 1 1 D

PROPERTY SUMMARY

Welcome to Tennyson Avenue, New Malden - a charming location that could be the perfect setting for your new home! This delightful mid-terrace house boasts a spacious 905 sq ft of living space, offering you plenty of room to create your dream living environment.

As you step inside, you are greeted by a cosy reception room, ideal for relaxing with family or entertaining guests. With three inviting bedrooms, there is ample space for a growing family or for those who enjoy having a home office or guest room.

The property features a well-appointed bathroom, ensuring your comfort and convenience. Whether you're getting ready for the day ahead or unwinding after a long day, this bathroom provides the perfect retreat.

Externally the property has a large private garden, there is unrestricted on street parking.

Tennyson Avenue is a sought-after location in New Malden, known for its friendly community atmosphere and convenient amenities. You'll find yourself within easy reach of local shops, schools, and transport links, making daily life a breeze.





Tennyson Avenue

Approximate Gross Internal Area = 84.1 sq m / 905 sq ft
(Excluding Shed)

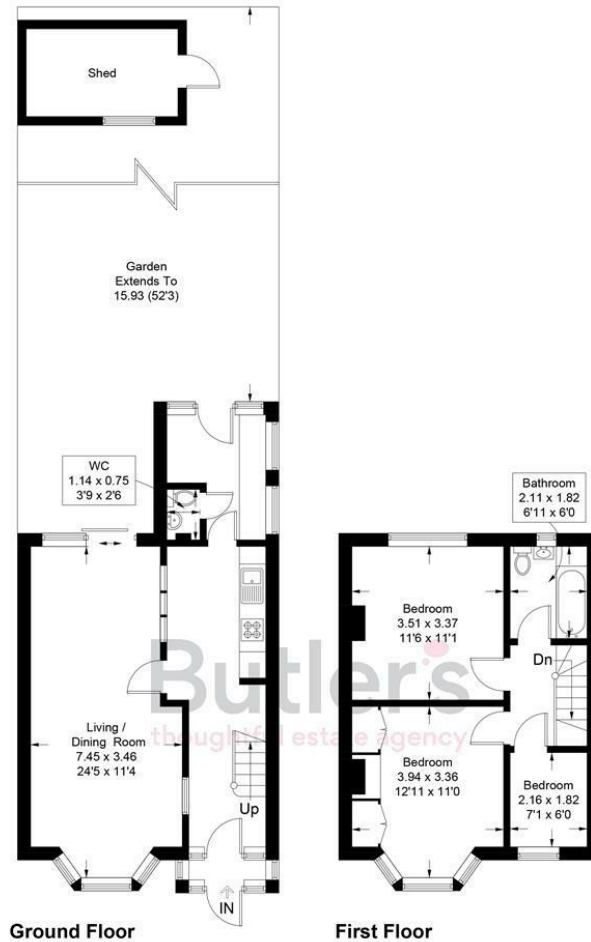


Illustration for identification purposes only, measurements are approximate, not to scale. floorplansUsketch.com © (ID1087529)

LOCAL AUTHORITY

DEPOSIT REQUIRED
£2,711

PROPERTY AVAILABLE DATE
1st July 2024

COUNCIL TAX BAND
D

VIEWINGS
By prior appointment only

Energy Efficiency Rating		Current	Potential
Very energy efficient - lower running costs			
(92 plus) A			87
(81-91) B			
(69-80) C		67	
(55-68) D			
(39-54) E			
(21-38) F			
(1-20) G			
Not energy efficient - higher running costs			
England & Wales		EU Directive 2002/91/EC	

Agents Note: Whilst every care has been taken to prepare these particulars, they are for guidance purposes only. All measurements are approximate and are for general guidance purposes only and whilst every care has been taken to ensure their accuracy, they should not be relied upon and potential buyers/tenants are advised to recheck the measurements

Butler's
thoughtful estate agency

OFFICE ADDRESS
18 Sutton Plaza
Sutton
Surrey
SM1 4FS

OFFICE DETAILS
020 39 170 160
lettings@butlershomes.co.uk
butlershomes.co.uk