



## Kandel Court, Lancashire, OL12 8RN £995 PCM

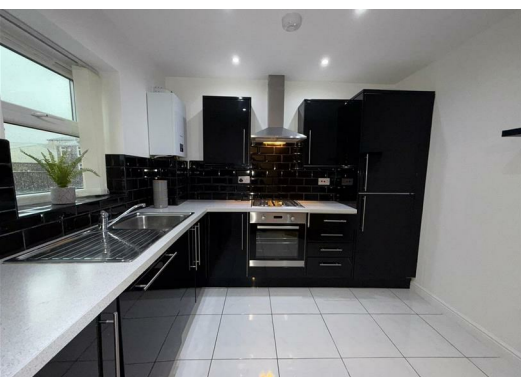
A modern three-bedroom end terrace situated on a private corner plot in a quiet cul-de-sac in Whitworth Village, offering a driveway to the side of the house. This attractive and well-presented home presents an excellent opportunity for first-time buyers or young families.

Located in the popular Whitworth area, the property benefits from gas central heating pvc double glazing and access to excellent local amenities, shops, supermarkets, and schools, as well as stunning nearby countryside like Healey Dell Nature Reserve and Cowm Reservoir, providing beautiful, picturesque walks.

The accommodation comprises an entrance leading into a modern fully fitted kitchen/diner with an integrated dishwasher, washing machine and fridge/freezer, a downstairs WC, and a spacious lounge to the rear with patio doors opening onto an enclosed garden. Upstairs, there are three well-proportioned bedrooms, two double and one single and a family bathroom with a shower over the bath.

This property combines comfortable living with a desirable location and ample parking space.

The property is competitively priced & early viewing is essential.

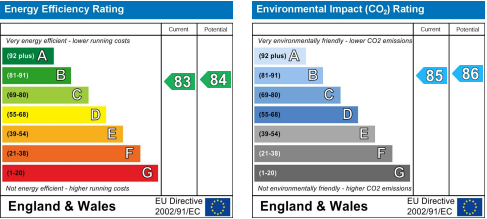


**Disclaimer:**

These particulars, whilst believed to be accurate are set out as a general guideline and do not constitute any part of an offer or contract. Intending Tenants should not rely on them as statements of representation of fact, but must satisfy themselves by inspection or otherwise as to their accuracy. Please note that we have not tested any apparatus, equipment, fixtures, fittings or services including gas central heating and so cannot verify they are in working order. Although we try to ensure accuracy, if measurements are used in this listing, they may be approximate. Therefore if intending Tenants need accurate measurements to order carpeting or to ensure existing furniture will fit, they should take such measurements themselves. Photographs are reproduced general information and it must not be inferred that any item is included for let with the property. Please contact 01706 823 131 for further details.

Viewing:

Viewing strictly by appointment through Lifestyle Sales and Lettings.



**Head Office:** 121 Whalley Road, Ramsbottom, Lancashire, BL0 0DG

**Telephone:** 01706823131 **Email:** enquiries@lifestylesalesandlettings.co.uk **Website:** www.lifestylesalesandlettings.co.uk