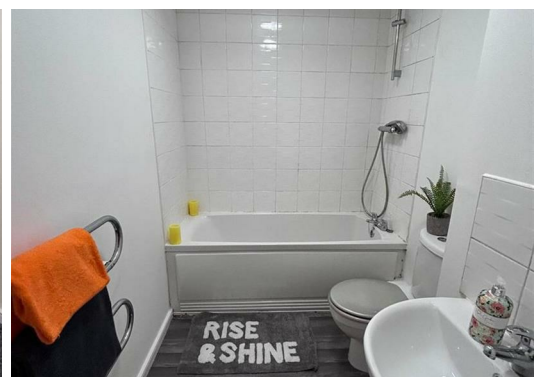
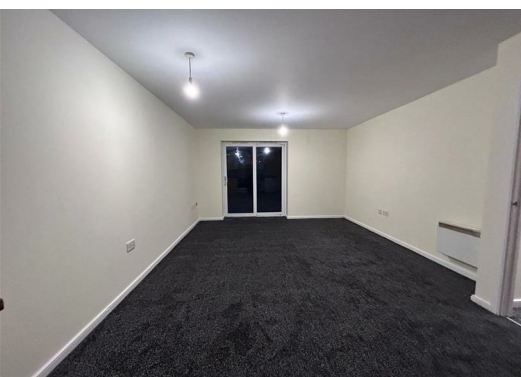




## Hollin Bank Court, Blackburn, BB2 4GY £695 PCM

**\*\*\* MUST SEE\*\*\*** A WELL PRESENTED ground floor apartment with a large OPEN PLAN fitted kitchen/lounge, ONE DOUBLE BEDROOM with built in wardrobes and a three piece bathroom suite. The property benefits from doubling glazing, electric heating, neutral decor, neutral carpets and an allocated car parking space. The property is close to Blackburn town centre and motorways links, ideal for a small family, professional couples or a retired couple.



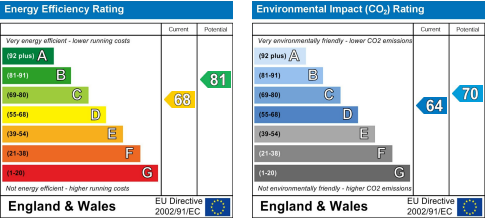
Disclaimer:

These particulars, whilst believed to be accurate are set out as a general guideline and do not constitute any part of an offer or contract. Intending Tenants should not rely on them as statements of representation of fact, but must satisfy themselves by inspection or otherwise as to their accuracy. Please note that we have not tested any apparatus, equipment, fixtures, fittings or services including gas central heating and so cannot verify they are in working order. Although we try to ensure accuracy, if measurements are used in this listing, they may be approximate. Therefore if intending Tenants need accurate measurements to order carpeting or to ensure existing furniture will fit, they should take such measurements themselves. Photographs are reproduced general information and it must not be inferred that any item is included for let with the property. Please contact 01706 823 131 for further details.



Viewing:

Viewing strictly by appointment through Lifestyle Sales and Lettings.



Head Office: 121 Whalley Road, Ramsbottom, Lancashire, BL0 0DG

Telephone: 01706823131 Email: enquiries@lifestylesalesandlettings.co.uk Website: www.lifestylesalesandlettings.co.uk