



Newchurch Road, Rossendale, BB4 7TG Offers Over £299,995

****Stunning 4-Bedroom End Terrace Home in Sought-After Rawtenstall****

Discover the perfect blend of modern amenities and historic charm in this stunning 4-bedroom end terrace, located on one of Rawtenstall's most desirable roads. Combining traditional character with contemporary features, this home is ideal for families seeking comfort, space, and style.

Upon entering, you are welcomed by a spacious living room that exudes warmth and character, featuring original exposed beams and a multi-fuel fire, perfect for cosy evenings. This inviting space is bathed in natural light from large windows, enhancing its airy and welcoming atmosphere.

The heart of the home is the kitchen, where traditional York stone flag flooring meets modern functionality. A second multi-fuel fire adds to the charm, creating a warm and inviting space for family gatherings. With ample room for dining, this kitchen is perfect for hosting dinners and entertaining guests, making it the true hub of the home.

The first floor boasts a generously sized front bedroom, large enough to comfortably fit a king-size bed, offering a relaxing retreat. A smaller adjacent bedroom is ideal for a child's room or a home office, providing versatile living options. The simple yet elegant four-piece family bathroom features a classic design, blending seamlessly with the home's traditional feel.

The second floor offers a private sanctuary, with an open bedroom featuring sloped ceilings for a cosy feel. An adjoining smaller room is perfect for a nursery, dressing room, or study, while the en-suite bathroom adds convenience and privacy.

Step outside to the secluded rear garden, a safe and tranquil space ideal for children to play or for adults to relax. With excellent schools nearby, countryside walks on your doorstep, and the vibrant town centre of Rawtenstall just a short distance away, this home offers the best of both serenity and convenience. Do not miss the opportunity to make this lovely property your new home.

Lounge

17'8" x 14'1" (5.40 x 4.30)

The Lounge is directly accessed front the front entrance. It is spacious, cosy along with the original beams and a stunning multifuel fire. Perfect for those cosy winter nights.



Kitchen Diner

17'8" x 14'1" (5.40 x 4.30)

This is a perfect kitchen for busy family life, with enough space for a 7ft dining table, gas hob, lots of under stair storage, and another multifuel fire. the back door opens into to the secluded garden, which is perfect for children to play, to socialise and great for dogs.



Bedroom 1

14'5" x 14'1" (4.40 x 4.30)

This is the largest bedroom of them all with out of the way storage, and ample size for a King size bed and furniture.



Bedroom 2

10'5" x 8'6" (3.20 x 2.60)

Currently used as a children's room. Not a double but ok for a single bed.



Bathroom

6'10" x 8'6" (2.10 x 2.60)

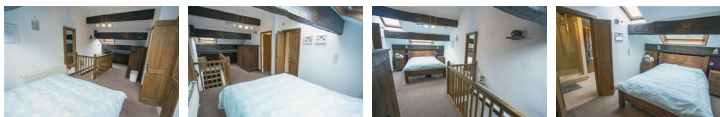
The 4 piece bathroom is a simple and functional family room with traditional fittings.



Bedroom 3

9'10" x 25'7" (3.00 x 7.80)

This offers multiple usage and works perfectly for a couple with a child, giving open space but also the privacy being upstairs on the top floor. The small room currently is used for a baby but could work as a office or walk in closet.



Bedroom 4

8'6" x 14'5" (2.60 x 4.40)

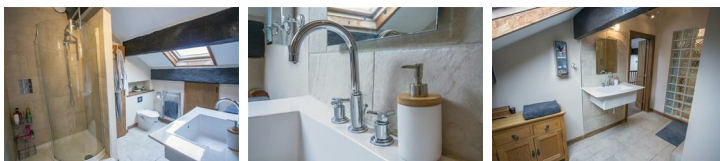
Currently this is used as a babies nursery but it would really work well as a study or walk in closet.



En-suite

7'6" x 10'9" (2.30 x 3.30)

This is a large en-suite with storage and very usable and plenty of "getting ready " space.



Storage area

7'6" x 3'7" (2.30 x 1.10)

Disclaimer:

these particulars, whilst believed to be accurate are set out as a general guideline and do not constitute any part of an offer or contract. Intending Purchasers should not rely on them as statements of representation of fact, but must satisfy themselves by inspection or otherwise as to their accuracy. Please note that we have not tested any apparatus, equipment, fixtures, fittings or services including gas central heating and so cannot verify they are in working order or fit for their purpose. Furthermore, Solicitors should confirm movable items described in the sales particulars and, in fact, included in the sale since circumstances do change during the marketing or negotiations. Although we try to ensure accuracy, if measurements are used

in this listing, they may be approximate. Therefore, if intending Purchasers need accurate measurements to order carpeting or to ensure existing furniture will fit, they should take such measurements themselves. Photographs are reproduced general information and it must not be inferred that any item is included for sale with the property.

Tenure - Freehold

To be confirmed by the Vendor's Solicitors

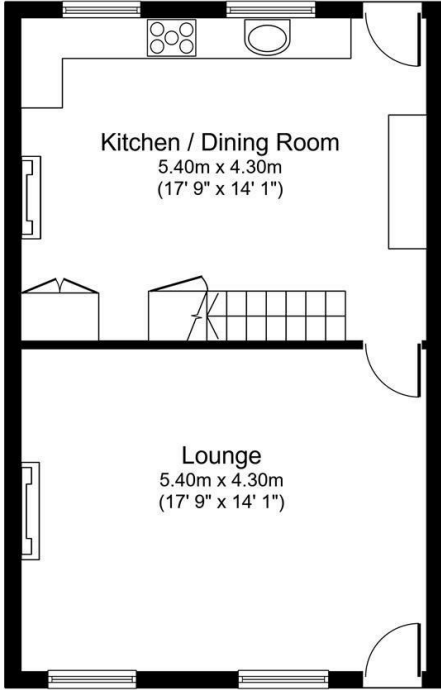
Possession:

Vacant possession upon completion

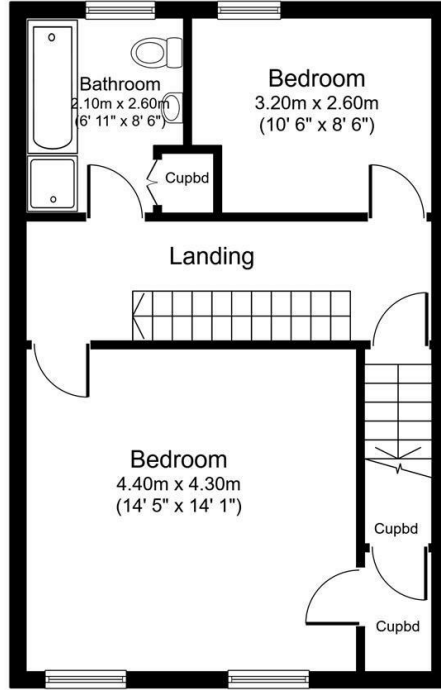
Viewing:

Viewing strictly by appointment through Lifestyle Sales and Lettings

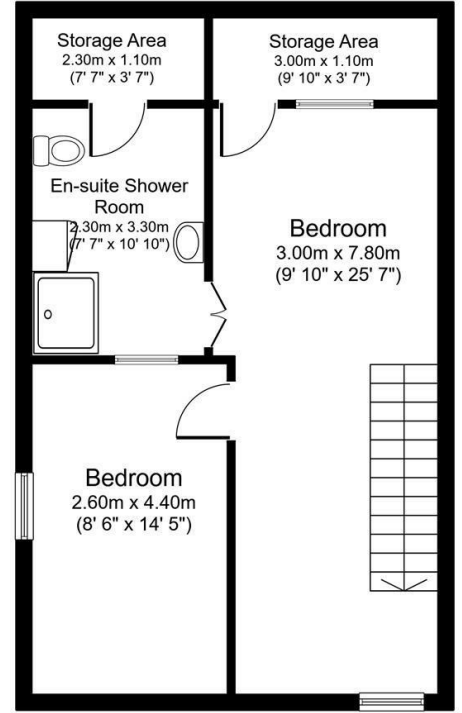
Total floor area 142.5 sq.m. (1,534 sq.ft.) approx



Ground Floor



First Floor



Second Floor

Created using Vision Publisher™

