



Lench Street, Rossendale, BB4 7BW £775 Per Calendar Month

RECENTLY REFURBISHED & MODERN

A good sized, two-bedroom, stone built back-to-back, mid-terrace house set over three floors and situated just off Townsend Street and the main Bacup road in a popular residential area of Waterfoot in Rossendale. The property has easy access to various local amenities, Rawtenstall Grammar School, and Waterfoot Primary School, and has good transport links nearby whilst still having the feel of the countryside on your doorstep. The property isn't overlooked to the front and comprises; a good-sized open plan kitchen/lounge to the ground floor, a cellar to the lower ground for storage which is accessed via the lounge, one bedroom and a three-piece bathroom suite with a shower over the bath to the first floor and a second bedroom to the second floor. The property benefits from having gas central heating, uPVC double glazing, and street parking to the front cobbled area.

Lifestyle Sales and Lettings urge interested parties to arrange an internal inspection as soon as possible to avoid disappointment.

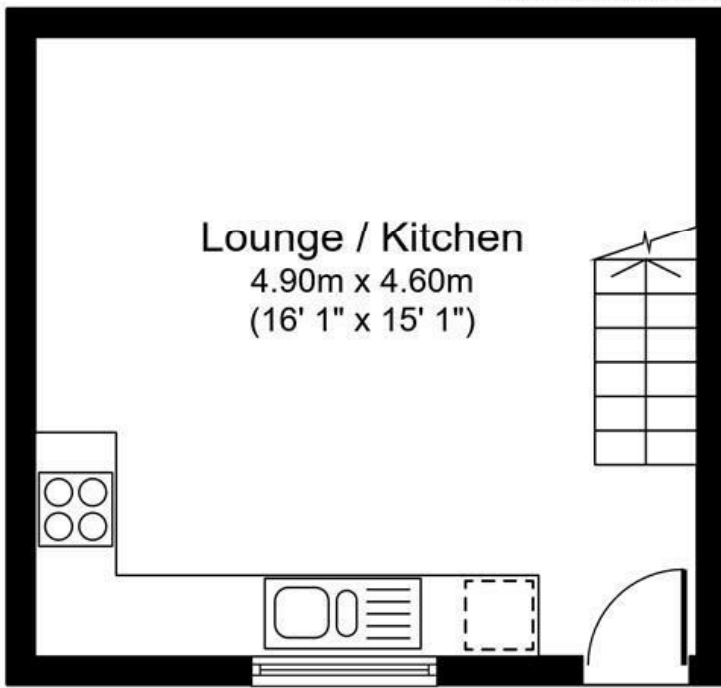
Disclaimer:

These particulars, whilst believed to be accurate are set out as a general guideline and do not constitute any part of an offer or contract. Intending Tenants should not rely on them as statements of representation of fact, but must satisfy themselves by inspection or otherwise as to their accuracy. Please note that we have not tested any apparatus, equipment, fixtures, fittings or services including gas central heating and so cannot verify they are in working order. Although we try to ensure accuracy, if measurements are used in this listing, they may be approximate. Therefore if intending Tenants need accurate measurements to order carpeting or to ensure existing furniture will fit, they should take such measurements themselves. Photographs are reproduced general information and it must not be inferred that any item is included for let with the property. Please contact 01706 823 131 for further details.

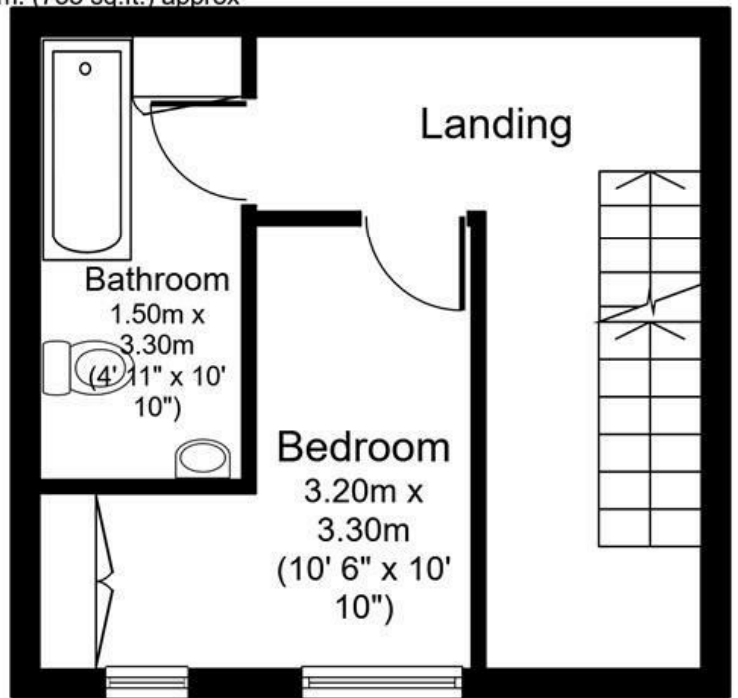
Viewing:

Viewing strictly by appointment through Lifestyle Sales and Lettings.

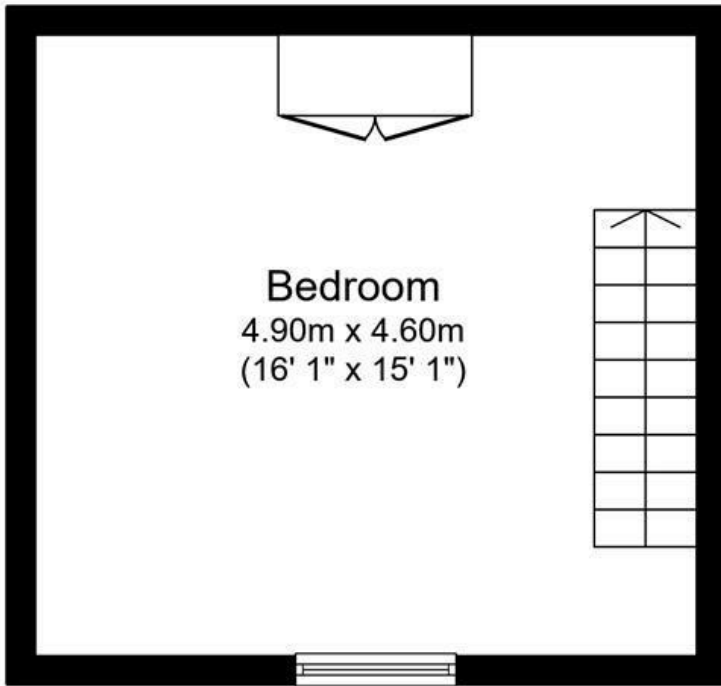
Total floor area 68.1 sq.m. (733 sq.ft.) approx



Ground Floor



First Floor



Second Floor

Created using Vision Publisher™

