



The Spinney
Hertford, SG13 7JR
Guide price £270,000

Icons representing property features: a bed icon with '1', a bathtub icon with '1', a sofa icon with '1', and a menu icon with 'E'.

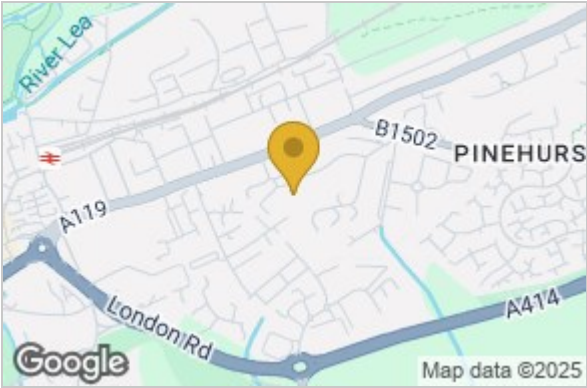
The Spinney, Hertford, SG13 7JR

Stylish One-Bedroom Apartment with Share of Freehold & Garden Views in Prime Hertford Location

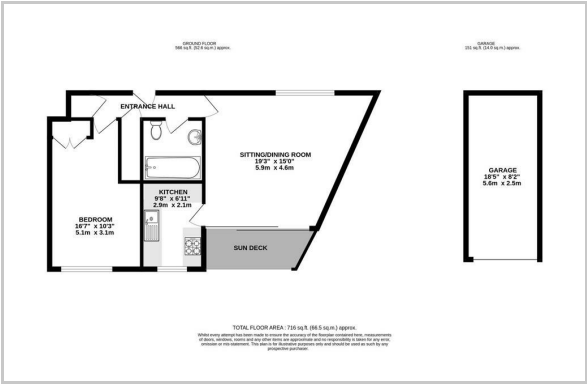
Greenhill Estates are delighted to present this beautifully appointed one-bedroom raised ground floor apartment, set within the sought-after Spinney development in Hertford. Perfectly positioned to enjoy views over the lush, landscaped communal gardens, this spacious and light-filled home provides a calm retreat just moments from the vibrant heart of Hertford Town Centre and Hertford East Station. With charming interiors, private outdoor space, and a wealth of communal facilities, this property delivers a superb lifestyle opportunity in an unbeatable location.



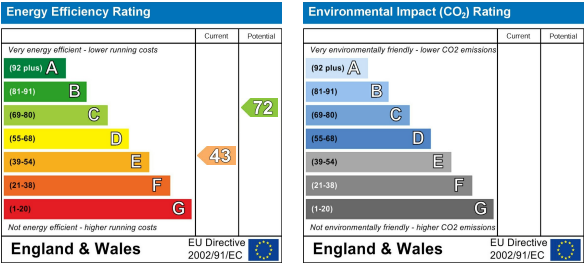
Area Map



Floor Plan



Energy Efficiency Graph



These particulars, whilst believed to be accurate are set out as a general outline only for guidance and do not constitute any part of an offer or contract. Intending purchasers should not rely on them as statements of representation of fact, but must satisfy themselves by inspection or otherwise as to their accuracy. No person in this firms employment has the authority to make or give any representation or warranty in respect of the property.