

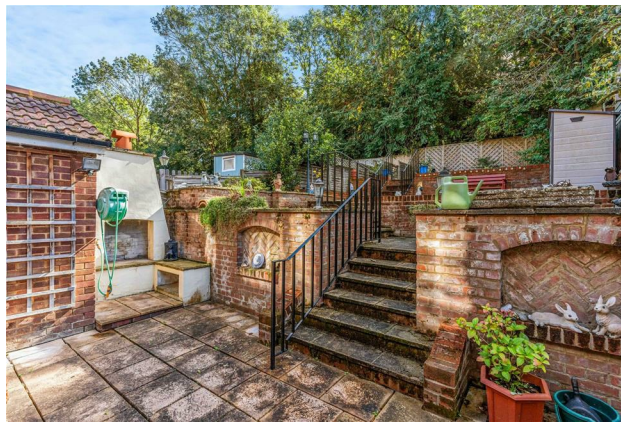


50 Burleigh Road
Hertford, SG13 7HA
Guide price £475,000

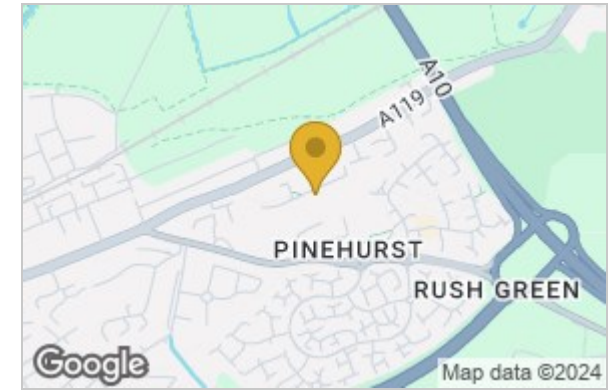


Burleigh Road, Hertford, SG13 7HA

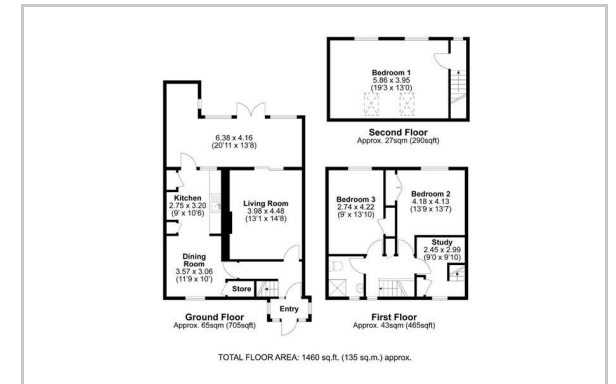
Greenhill Estates is excited to showcase this spacious three-bedroom terraced house offering almost 1500 sq ft of accommodation and featuring a double driveway, nestled in the much-coveted SG13 area. This property is advantageously located near essential amenities, including highly-regarded schools and The Meads, which provide scenic countryside trails. The residence has been enhanced with a rear extension, which offers huge potential to make a large open plan living kitchen diner at the rear and the opportunity to enhance the property further with potential for skylights and bi folding doors should a potential applicant wish to do so. The current downstairs accommodation offers a lounge and kitchen diner area which seamlessly blends into this rear extension. Upstairs the house offers three double bedrooms and a shower room over the top two floors including a large bedroom which has been converted through a loft conversion. This home not only boasts ample living space and adaptable rooms but also presents further scope for customisation, making it a standout opportunity.



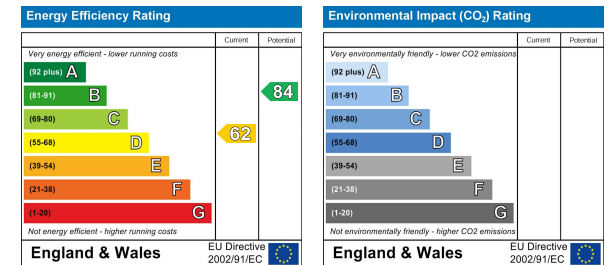
Area Map



Floor Plan



Energy Efficiency Graph



These particulars, whilst believed to be accurate are set out as a general outline only for guidance and do not constitute any part of an offer or contract. Intending purchasers should not rely on them as statements of representation of fact, but must satisfy themselves by inspection or otherwise as to their accuracy. No person in this firm's employment has the authority to make or give any representation or warranty in respect of the property.