



Apartment 128, 15 Kidderpore Avenue
, London, NW3 7SJ

Guide price £1,000,000

3 2 1  

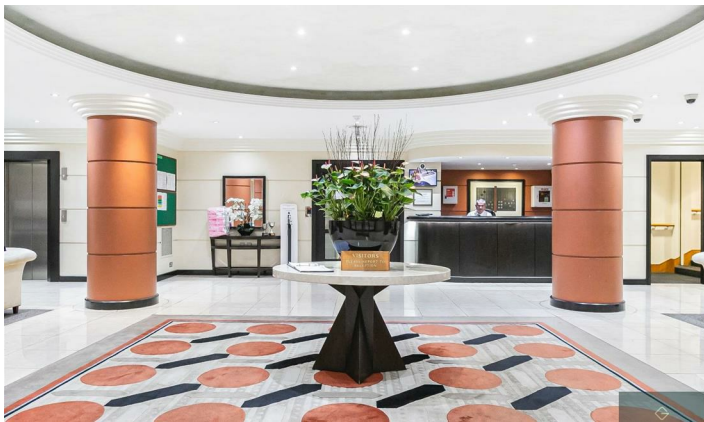
Apartment 128, 15 Kidderpore Avenue, London, NW3 7SJ

CHAIN FREE - 3 DOUBLE BEDROOMS - 2 BATHROOMS - SWIMMING POOL - GYM AND 24 HR CONCIERGE - UNDERGROUND PARKING

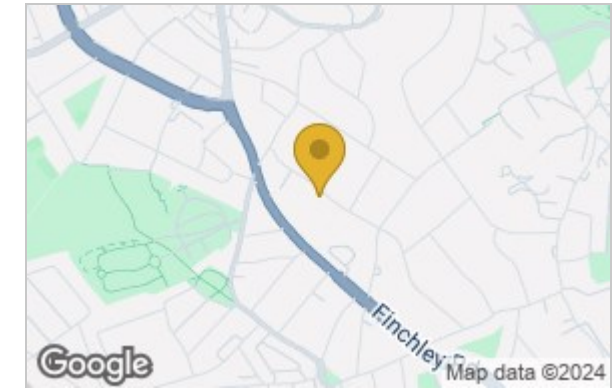
Introducing a stunning three-bedroom lateral 1046sq ft (97 sq m) apartment located in a highly sought-after purpose-built block in Hampstead. This exceptional residence boasts secure underground parking, a 24-hour concierge, a gym, a swimming pool, and beautifully landscaped grounds and really is a home fit for lifestyle as well as comfort.

The apartment features an expansive open plan reception room with fully fitted kitchen, a principal bedroom complete with fitted wardrobes and an en-suite shower room, plus two additional double bedrooms and a family bathroom. The property also enjoys lovely views across the communal gardens from every window. Ample storage options enhance the practicality of this lovely home, which includes one dedicated underground parking space.

Westfield is renowned for its outstanding resident amenities, including an indoor swimming pool, a private gymnasium, and exquisite communal gardens, all complemented by round-the-clock portage. Conveniently situated just moments from Finchley Road (Metropolitan/Jubilee/Overground Lines, 1 mile) and Hampstead Village (Northern Line, 0.8 miles), residents can enjoy a vibrant selection of upscale retail shops, restaurants, and charming pavement cafes.



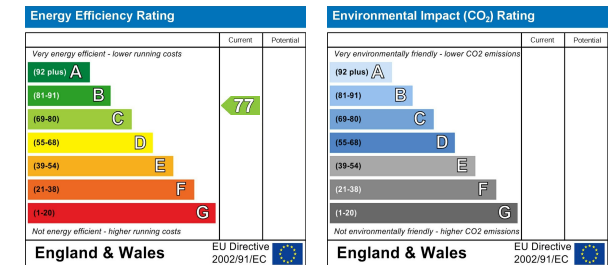
Area Map



Floor Plan



Energy Efficiency Graph



These particulars, whilst believed to be accurate are set out as a general outline only for guidance and do not constitute any part of an offer or contract. Intending purchasers should not rely on them as statements of representation of fact, but must satisfy themselves by inspection or otherwise as to their accuracy. No person in this firm's employment has the authority to make or give any representation or warranty in respect of the property.