



Coulter Close  
Cuffley, Potters Bar, EN6 4RR  
Guide price £1,350,000





## Coulter Close, Cuffley, Potters Bar, EN6 4RR

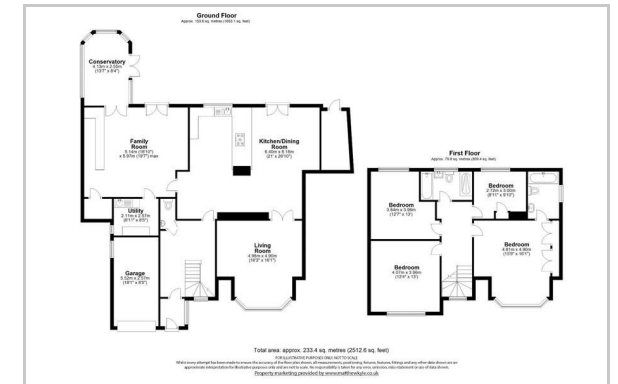
Greenhill Estates is thrilled to present this exquisitely located four-bedroom detached house in the highly desirable area of Cuffley. Nestled in a tranquil and sought-after cul-de-sac just off Bradgate, this family home sits on a 1/4 acre plot and offers unparalleled privacy, backing onto beautiful woodland. The property has been thoughtfully extended to provide exceptional family living space, complemented by a generous outdoor area that includes a well-maintained heated swimming pool. Viewing is highly recommended! Offered Chain Free.



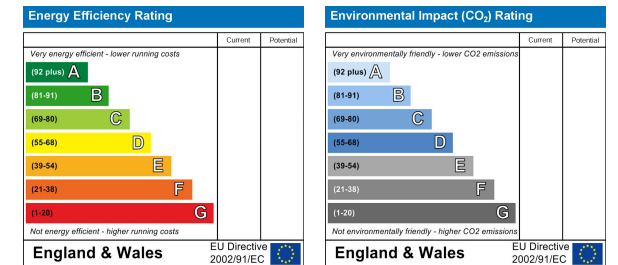
## Area Map



## Floor Plan



## Energy Efficiency Graph



These particulars, whilst believed to be accurate are set out as a general outline only for guidance and do not constitute any part of an offer or contract. Intending purchasers should not rely on them as statements of representation of fact, but must satisfy themselves by inspection or otherwise as to their accuracy. No person in this firm's employment has the authority to make or give any representation or warranty in respect of the property.