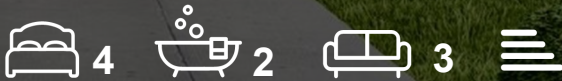




Wilton End Cottage Radlett Lane
Shenley, Radlett, WD7 9AJ

Offers in excess of £2,000,000



Wilton End Cottage Radlett Lane, Shenley, Radlett, WD7 9AJ

BUILD YOUR DREAM BARN CONVERSION ON A 4.1 ACRE EQUESTRIAN PROPERTY

Greenhill Estates is thrilled to present a unique opportunity to craft a luxurious three-bedroom barn conversion on a 4.1-acre equestrian property in Shenley. This detached barn, boasting full outline planning consent approval, offers an ideal foundation for a breathtaking transformation that captures the sweeping views of the verdant countryside.

Included on the property is a pre-existing 3/4-bedroom house, with authorized plans for an extensive two-story extension. This current residence, in conjunction with the planned barn conversion, presents a flexible living arrangement that seamlessly blends contemporary comfort with rustic allure.

Envision the possibilities of bespoke craftsmanship and sophisticated design as you contemplate the potential of these two distinctive living spaces. Positioned just 2 miles from Radlett and 6 miles from St. Albans, this property delivers a tranquil village ambiance with convenient proximity to urban amenities and transportation connections.

Indulge in the outstanding equestrian facilities, featuring an all-weather ménage, a well-appointed stable block, and nearby bridleways for leisurely horseback rides. Families will value the nearness to



The Barn

Existing House

Equestrian Facilities

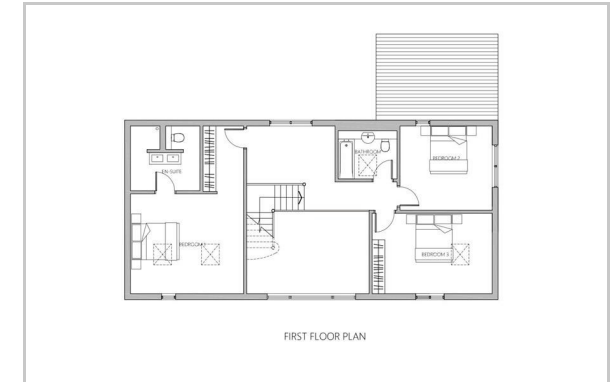
Location



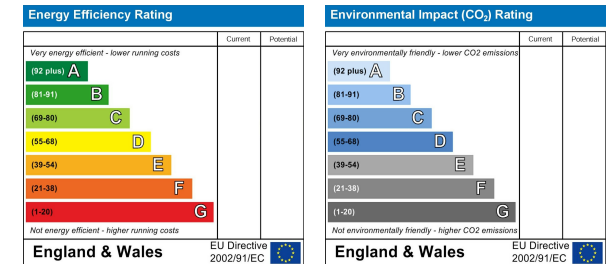
Area Map



Floor Plan



Energy Efficiency Graph



These particulars, whilst believed to be accurate are set out as a general outline only for guidance and do not constitute any part of an offer or contract. Intending purchasers should not rely on them as statements of representation of fact, but must satisfy themselves by inspection or otherwise as to their accuracy. No person in this firm's employment has the authority to make or give any representation or warranty in respect of the property.