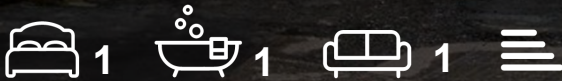


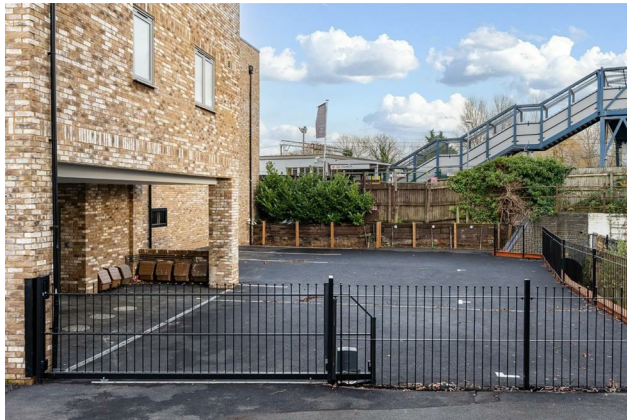


Flat 4a 210 Windmill Lane
, Cheshunt, EN8 9AF
Guide price £280,000



Flat 4a 210 Windmill Lane, Cheshunt, EN8 9AF

BRAND NEW Greenhill Estates is thrilled to showcase this exceptional one-bedroom second-floor apartment situated in a stunning brand new apartment block adjacent to Cheshunt mainline railway station which offers direct access to London Liverpool Street and London Stratford in just 24 minutes and Tottenham Hale is a mere 9 minutes away. Not only does this property enjoy an enviable location but internally has been built and designed to the highest of standards, with large rooms, plenty of storage and a luxurious and bright finish throughout. Featuring a stylish fully fitted kitchen with built in appliances, an Italian marble bathroom and a large spacious bedroom, this property would really suit an investor or someone looking for a convenient and luxurious place to call home. The property is also offered for sale with gated allocated parking, a share of freehold and a brand new 999-year lease. Don't miss out on this opportunity – we strongly recommend arranging an internal viewing.



Step Inside

Step Outside

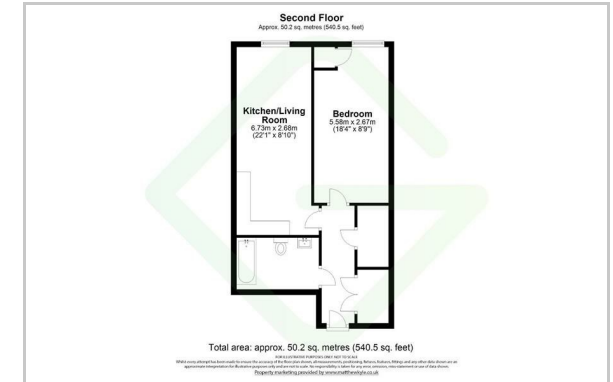
Location

Service Charges

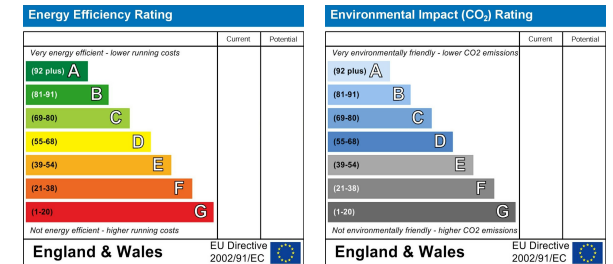
Area Map



Floor Plan



Energy Efficiency Graph



These particulars, whilst believed to be accurate are set out as a general outline only for guidance and do not constitute any part of an offer or contract. Intending purchasers should not rely on them as statements of representation of fact, but must satisfy themselves by inspection or otherwise as to their accuracy. No person in this firm's employment has the authority to make or give any representation or warranty in respect of the property.