



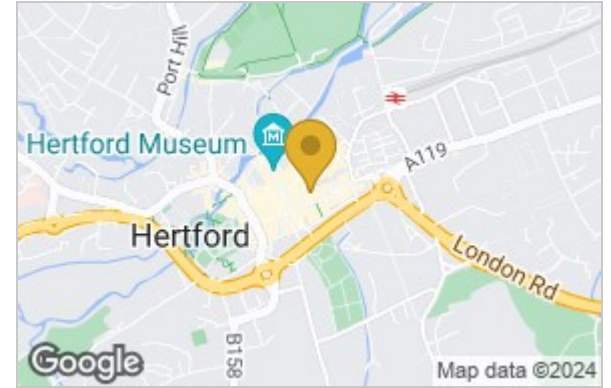
Providence Place Railway Street  
Hertford, SG14 1EH  
Guide price £565,000



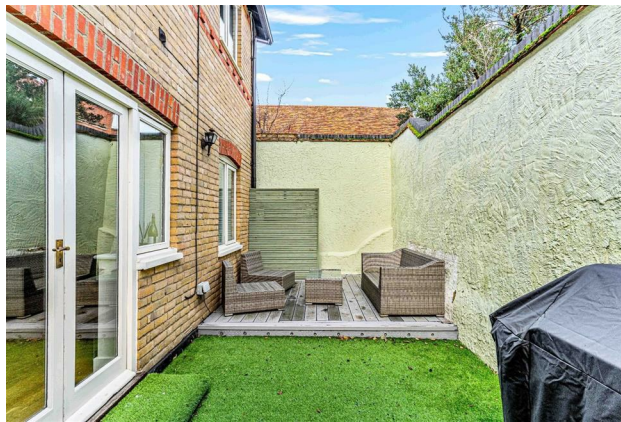
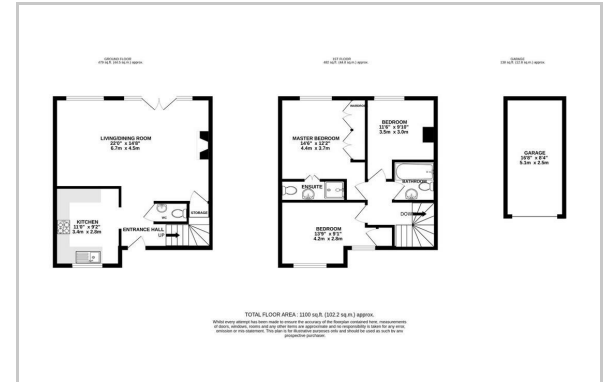
Providence Place Railway Street, Hertford, SG14 1EH

Greenhill Estates is excited to present a prime town centre three double bedroom property with parking and a garage that combines the serenity of gated community living with the convenience of urban amenities. This property is a stone's throw away from the railway station, a variety of dining options, a plethora of shops, and all the vibrant offerings of the town centre, while also providing a tranquil and secure lifestyle.

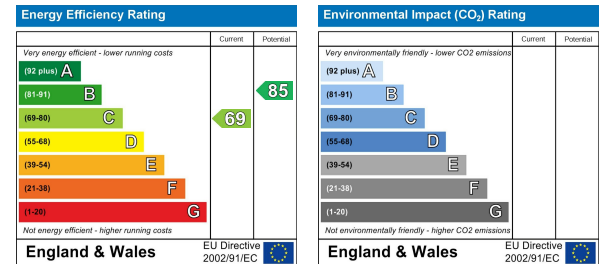
### Area Map



### Floor Plan



### Energy Efficiency Graph



These particulars, whilst believed to be accurate are set out as a general outline only for guidance and do not constitute any part of an offer or contract. Intending purchasers should not rely on them as statements of representation of fact, but must satisfy themselves by inspection or otherwise as to their accuracy. No person in this firm's employment has the authority to make or give any representation or warranty in respect of the property.