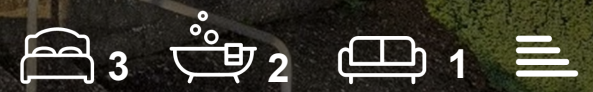




Glebe Road
Hertford, SG14 3JY
Guide price £670,000



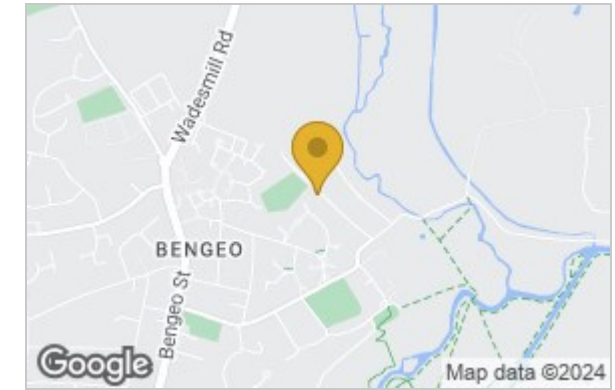
Glebe Road, Hertford, SG14 3JY

*****EXTENDED SEMI-DETACHED HOUSE WITH REAR GATED ACCESS TO LARGE GARAGE & DRIVEWAY*****

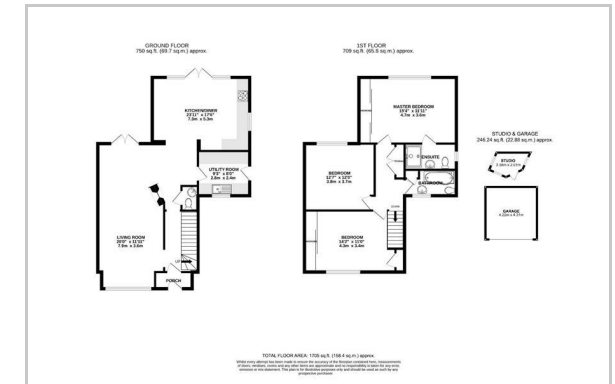
Greenhill Estates proudly presents a unique opportunity to acquire an expansive, three-bedroom, semi-detached house with significant enhancements and a generous 100ft+ rear garden. This distinguished property offers a double garage and a spacious driveway, accessed from Watermill Lane, and is situated on a notably large plot accessible from Glebe Road as well. To fully appreciate the distinctiveness of this property, an internal viewing is highly recommended. Contact us today to schedule your visit.



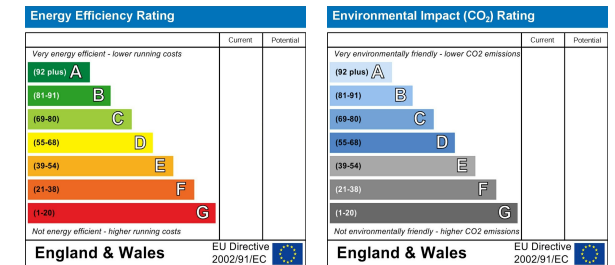
Area Map



Floor Plan



Energy Efficiency Graph



These particulars, whilst believed to be accurate are set out as a general outline only for guidance and do not constitute any part of an offer or contract. Intending purchasers should not rely on them as statements of representation of fact, but must satisfy themselves by inspection or otherwise as to their accuracy. No person in this firm's employment has the authority to make or give any representation or warranty in respect of the property.