



**THE
WILDERNESS**

Hoddesdon Road, SG12



Beautifully placed

Discover a collection of innovatively designed
new homes in a peaceful and private
waterside setting.

**Set amongst Hertfordshire's
beautiful countryside, The
Wilderness consists of elegant and
contemporary 3 and 4 bedroom
waterside homes.**



**THE
WILDERNESS
PLOTS 1-6**

An enviable location

Situated in Stanstead Abbots nestled between the market towns of Hertford and Ware, The Wilderness benefits from a peaceful yet well-connected location within walking distance of all local amenities which include local shops, restaurants and St Margarets mainline railway station providing direct routes to London. The A10, M25, M11 and A1 are also within easy reach by car.



Ideally placed to enjoy a rural setting with stunning views across secluded countryside and The New River, a controlled watercourse providing fresh water into London. You can also enjoy country walks with beautiful scenery.

An excellent choice of local schools are also close by such as the Ofsted Outstanding Amwell View Primary School, Cranbourne Primary School, John Warner Secondary School, Richard Hale Secondary School, as well as the renowned Haileybury and Heath Mount private schools which are both within a close driving distance



Go and explore



Walk



7 mins

ST MARGARETS



9 mins

THE VILLAGE PHARMACY



10 mins

CO-OP SUPERMARKET



Road



5 mins

WARE



8 mins

HERTFORD



32 mins

STANSTED AIRPORT



Train



27 mins

TOTTENHAM HALE



41 mins

LIVERPOOL STREET



42 mins

KINGS CROSS



SITE PLAN

- 4 BED DETACHED - 2245 SQ FT
- 3/4 BED SEMI - 1749 SQ FT
- 3/4 BED SEMI - 1749 SQ FT
- 4 BED DETACHED - 2241 SQ FT

8

1

2

3

4

5

6

7



FEATURES

- Unique Designs
- Waterside Living
- Luxury Bathrooms
- Modern Kitchen/Diner
- Utility Spaces
- Study
- Spacious Bedrooms
- Open Plan Living Spaces
- Landscaped Rear Gardens
- Parking
- Storage Spaces
- 10 Year Warranty
- Balconys



THE
WILDERNESS
PLOTS 1-6 & 8

PLOTS 1 & 6
1749 SQ FT

Ground

Utility Room

3.8m x 3.7m / 12'6 x 12'2

Bathroom

Cycle Store

Bin Store

First

Bedroom 1

3.5m x 3.4m / 11'6 x 11'2

Ensuite

Study

3.2m x 3.1m / 10'6 x 10'2

Bedroom 3

2.8m x 2.4m / 9'2 x 7'10

Bedroom 4

4.7m x 2.6m / 15'5 x 8'6

Bathroom

Second

Dining/ Living Room

5.7m x 5.6m / 18'8 x 18'4

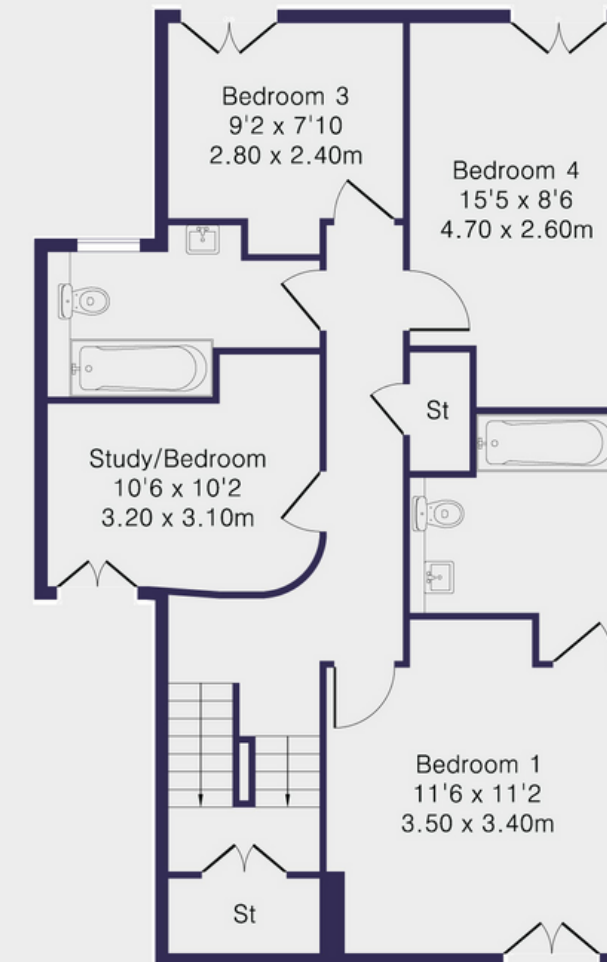
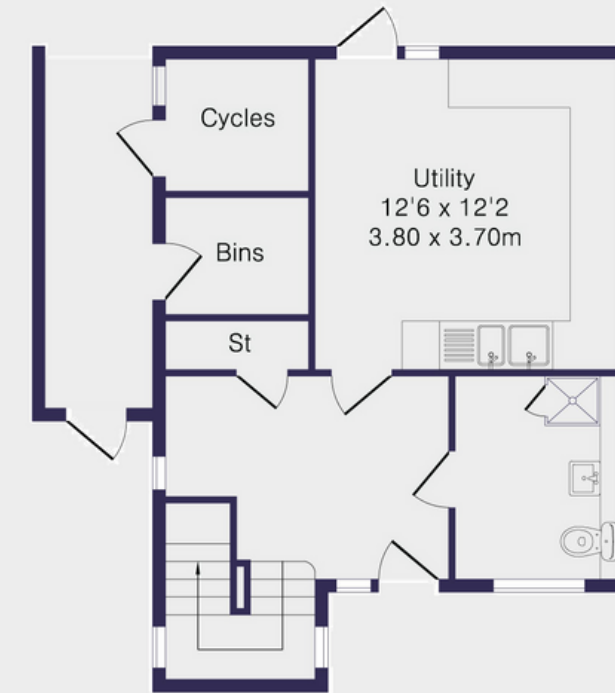
Kitchen

3.6m x 3.3m / 11'10 x 10'10

Balcony

5.6m x 1.6m / 18'4 x 5'3 /

Ground Floor



First Floor



Second Floor

PLOTS 2, 3, 4, 5
1749 SQ FT

Ground

Utility Room

3.8m x 3.7m / 12'6 x 12'2

Bathroom

Cycle Store

Bin Store

First

Bedroom 1

3.5m x 3.4m / 11'6 x 11'2

Ensuite

Study

3.2m x 3.1m / 10'6 x 10'2

Bedroom 3

2.8m x 2.4m / 9'2 x 7'10

Bedroom 4

4.7m x 2.6m / 15'5 x 8'6

Bathroom

Second

Dining/ Living Room

5.7m x 5.6m / 18'8 x 18'4

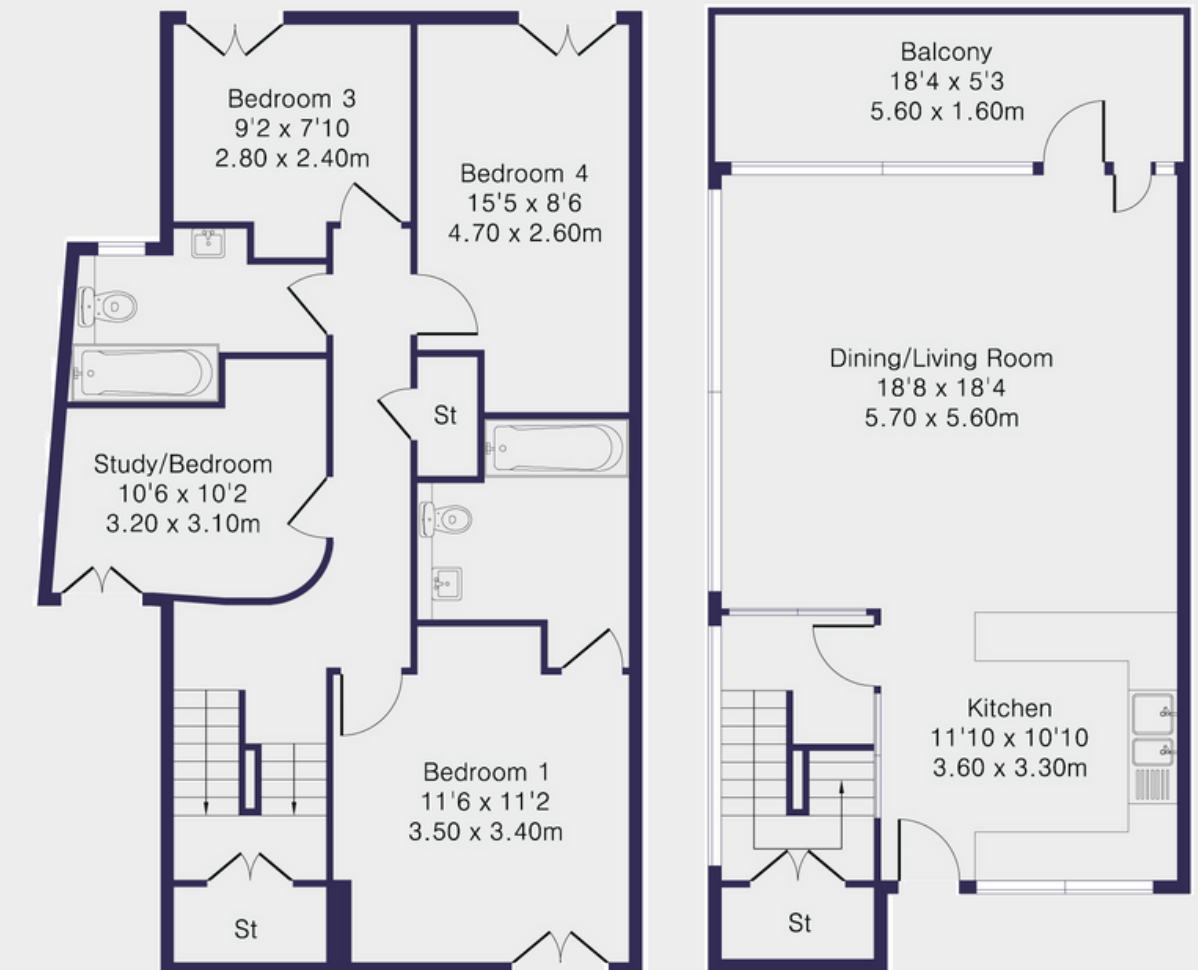
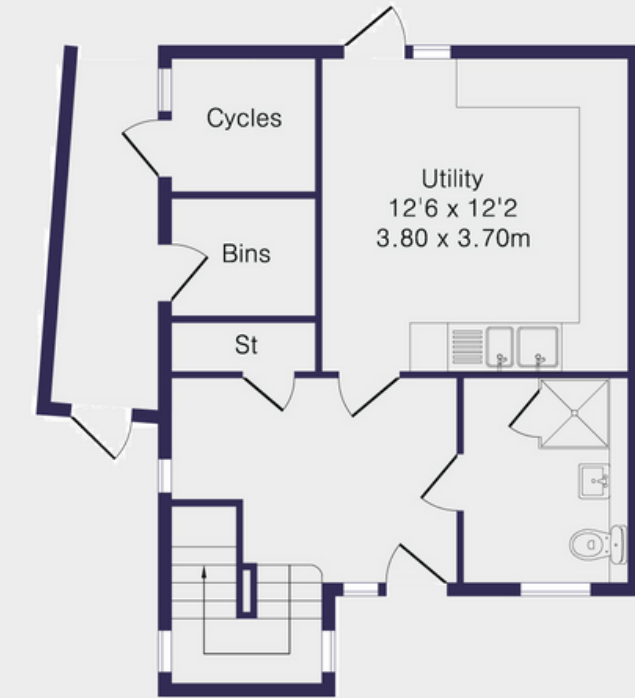
Kitchen

3.6m x 3.3m / 11'10 x 10'10

Balcony

5.6m x 1.6m / 18'4 x 5'3 /

Ground Floor



First Floor

Second Floor

PLOTS 7

2693 SQ FT

Ground

Utility Room

4.1m x 2.6m / 13'5 x 8'6

Bathroom

Work Room

4.1m x 1.9m / 13'5 x 6'3

Garden Store

4.1m x 3.2m / 13'5 x 10'6

Bin Store

First

Bedroom 1

4.7m x 3.1m / 15'5 x 10'2

Ensuite

Bedroom 2

4.8m x 4.4m / 15'9 x 14'5

Bedroom 3

3.8m x 3.6m / 12'6 x 11'10

Ensuite

Bedroom 4

3.8m x 3.3m / 12'6 x 11'10

Bathroom

Second

Dining/ Living Room

5.4m x 4.6m / 17'9 x 15'1

Kitchen

8.0m x 3.7m / 26'3 x 12'12

Balcony

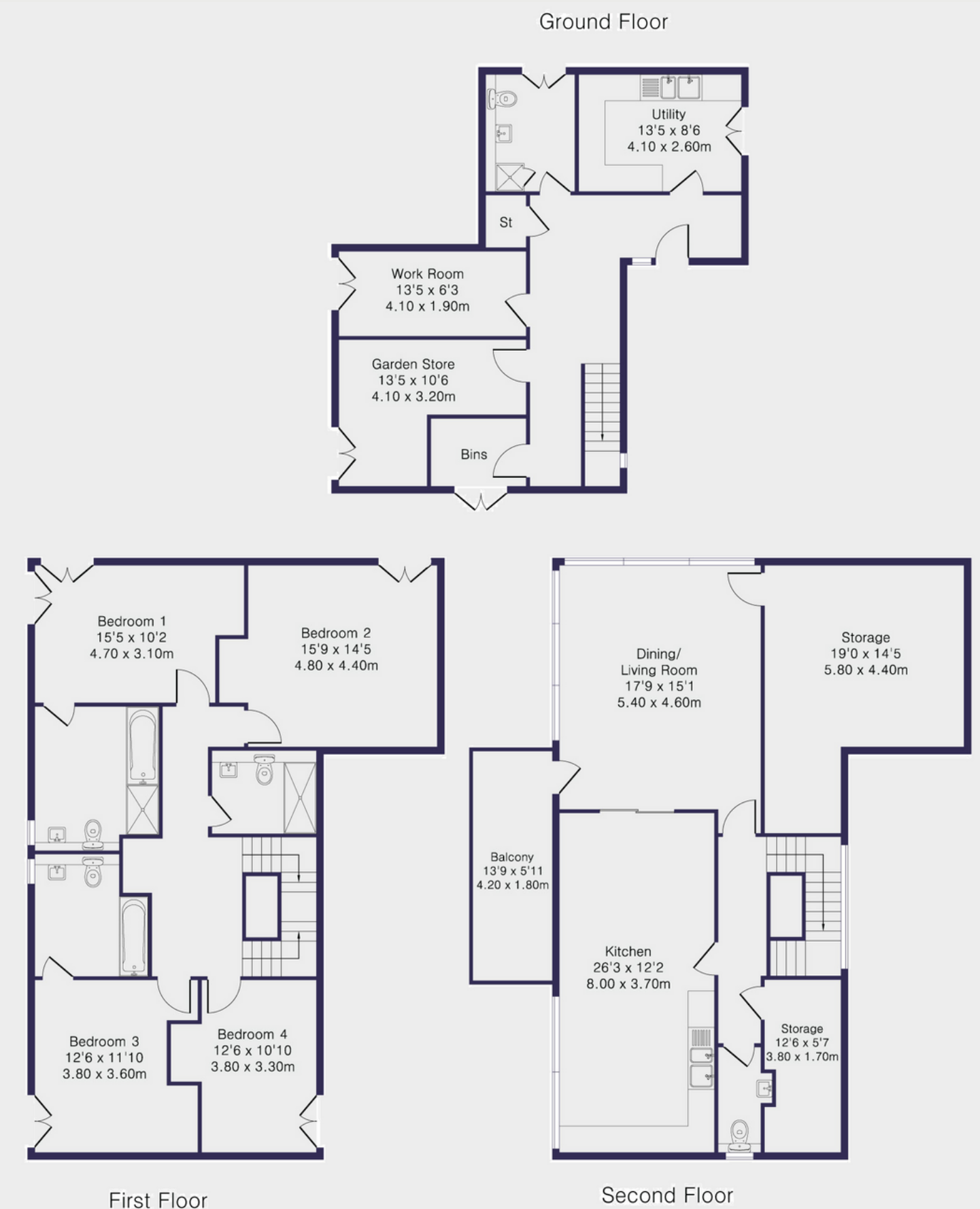
5.6m x 1.6m / 18'4 x 5'3

Storage

5.8m x 4.4m / 19'0 x 14'5

Storage

3.8m x 1.7m / 12'6 x 5'5



PLOTS 8
2586 SQ FT

Ground

Utility Room

5.4m x 2.8m / 17'9 x 9'2

Bathroom

Work Room

2.5m x 1.4m / 8'2 x 4'7

Garden Store

1.7m x 1.4m / 5'7 x 4'7

Bin Store

First

Bedroom 1

4.7m x 3.0m / 15'5 x 9'10

Ensuite

Bedroom 2

4.8m x 4.4m / 13'1 x 9'6

Bedroom 3

3.8m x 3.6m / 12'6 x 11'10

Ensuite

Bedroom 4

3.8m x 3.3m / 12'6 x 11'10

Bathroom

Second

Dining/ Living Room

6.0m x 5.5m / 19'8 x 18'1

Kitchen

7.10m x 3.6m / 23'4 x 11'10

Balcony

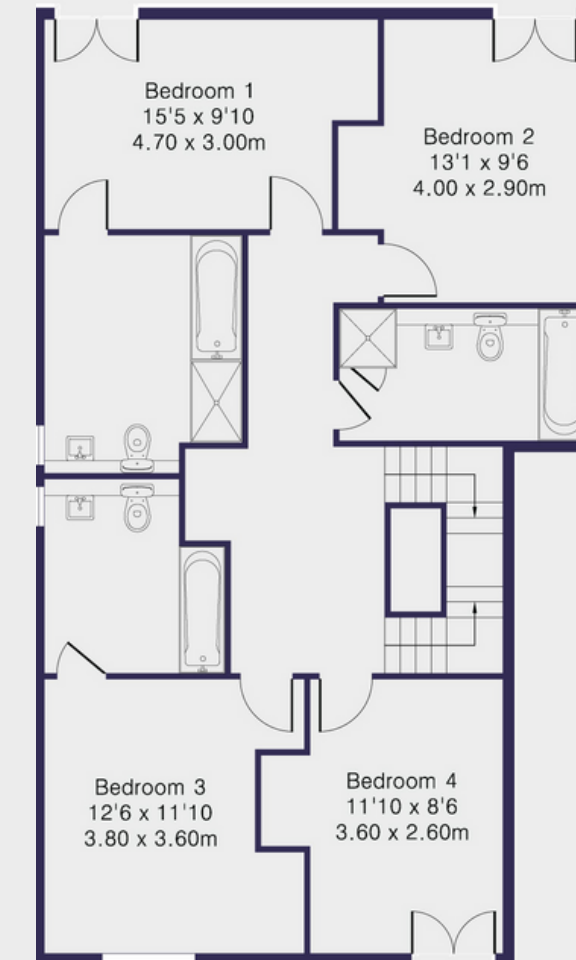
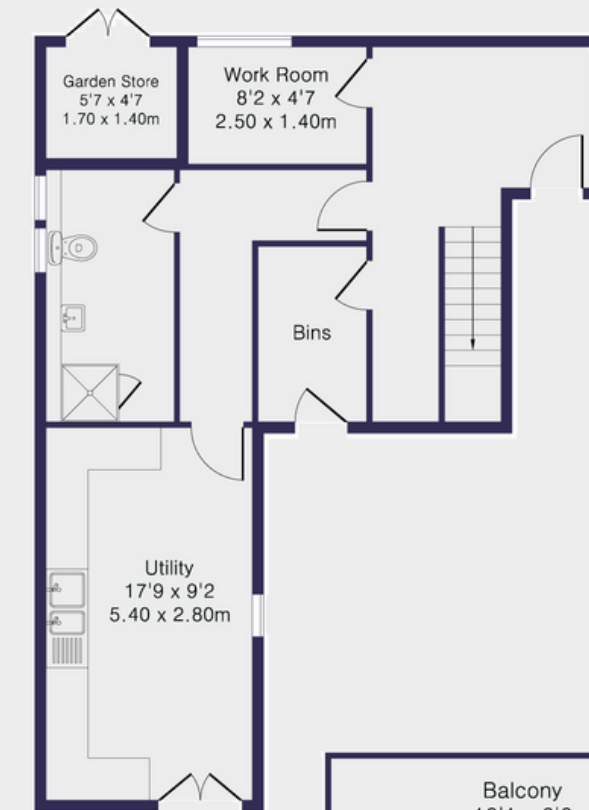
5.5m x 1.9m / 18'1 x 6'3

Storage

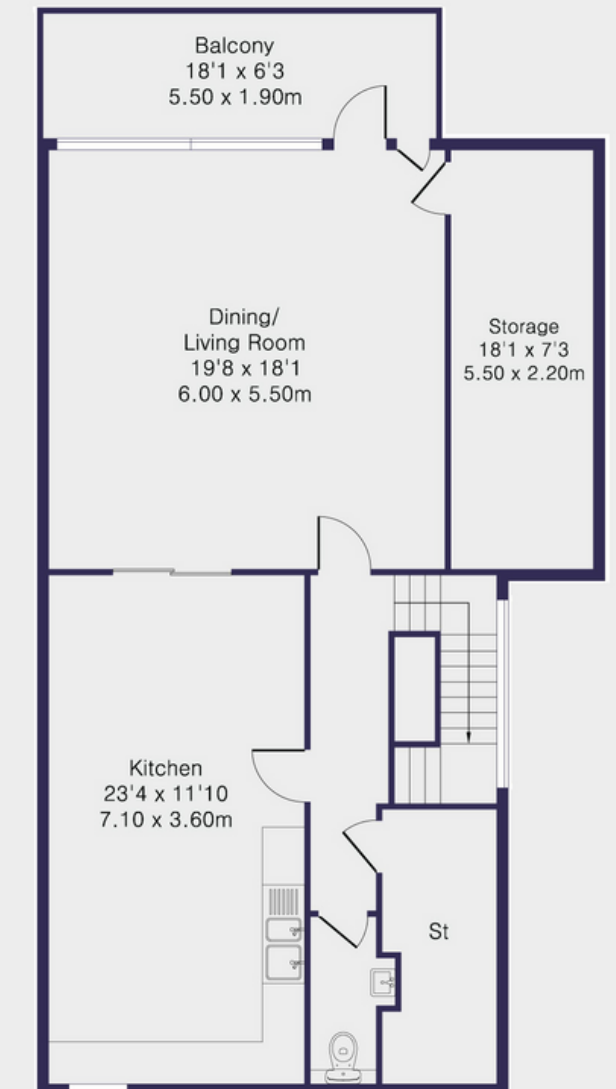
5.5m x 2.2m / 18'0 x 7'3

Storage

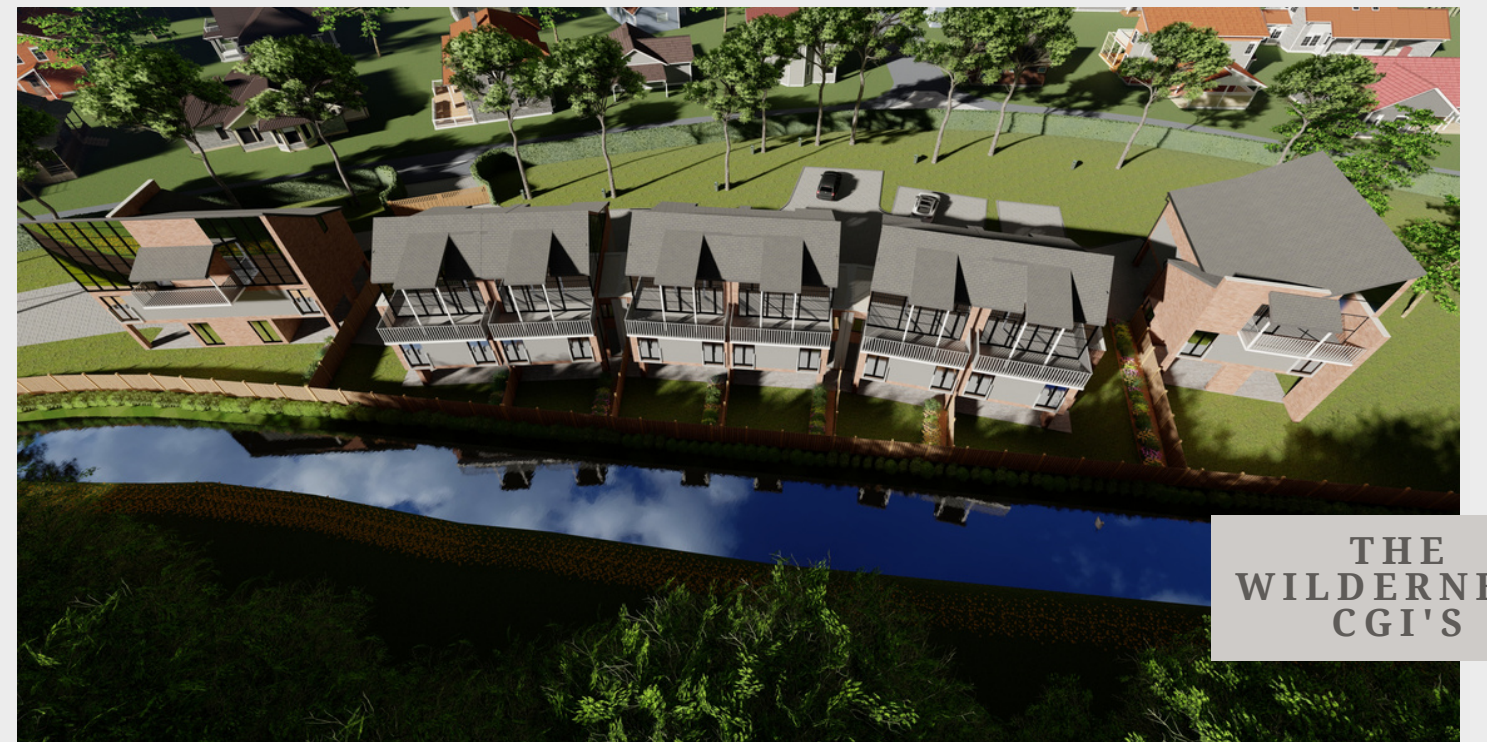
Ground Floor



First Floor



Second Floor



THE
WILDERNESS
CGI'S



THE
WILDERNESS
CGI'S



DESIGN
TWENTY FIVE

AT DESIGN 25, WE DESIGN, BUILD AND FURNISH BEAUTIFULLY DETAILED EFFICIENT HOMES, WE ARE A GROUP OF OVER 20 PASSIONATE, ENERGETIC PROFESSIONALS PUSHING THE BOUNDARIES OF ARCHITECTURE, INTERIOR DESIGN AND CONSTRUCTION TO BUILD A REPUTATION FOR EXCELLENCE IN OUR MARKET. WE ARE UNIQUE IN OUR APPROACH AND INNOVATION LIES AT THE HEART OF OUR COMPANY.

WWW.DESIGN25LTD.COM

Whilst every care has been taken to ensure accuracy these particulars do not constitute part of any offer or contract and the right to change plans, specifications and materials is reserved. All measurements are given as a guide only. No liability can be accepted for any errors arising there from. No responsibility is taken for any other error, omission, or mis-statements in these particulars. Neither the vendor nor its agents make or give, whether in these particulars, during the negotiations or otherwise, any representation or warranty in relation to this property. Specifications for this development may not include fixtures, fittings and furnishings shown in the photographs and illustrations.



CALL OR EMAIL TO REGISTER YOUR INTEREST:
01992 475 213 / SALES@GREENHILLESTATES.CO.UK

WWW.GREENHILLESTATES.CO.UK