

SIMPLY GREEN

Fullers Place

Chudleigh



2 BEDROOM SEMI DETACHED

- ◆SEMI DETACHED HOUSE
- ◆OFF ROAD PARKING
- ◆TWO BEDROOMS
- ◆LOUNGE DINING ROOM
- ◆FITTED SYMPHONY KITCHEN
- ◆RECENTLY LANDSCAPED REAR GARDENS
- ◆LOUNGE
- ◆GROUND FLOOR WC
- ◆SOUGHT AFTER LOCATION
- ◆TENURE - FREEHOLD. COUNCIL TAX BAND B.

The property is located near the town of Chudleigh, which is a popular, thriving, country town, which offers an excellent range of shops and amenities. Including a health centre, library, several inns and restaurants. A primary/junior school, a playgroup and a mother and toddler group. There are churches of most denominations and sporting facilities include horse riding, football, cricket and bowls. The town is ideally situated within easy reach of the coast at Teignmouth and Torbay and of the beautiful Dartmoor National Park. The A38, which bypasses the town, gives easy access to the cities of Plymouth and Exeter and the motorway system. The market town of Newton Abbot is around 5 miles away.



Accommodation

External lighting with composite obscure double glazed door leading to an entrance hallway with staircase rising to the first floor and radiator. There is a built-in storage cupboard with fitted shelving and a separate door that leads to the modern downstairs WC, offering a contemporary wash hand basin with tiled splash back, WC, radiator and extractor fan. The accommodation continues from the hallway to the modern kitchen/diner with a uPVC double glazed window to the front aspect, stainless steel, single drainer, single bowl sink insert with marble effect Siroco worktops and a range of modern matching matt Anthracite Symphony base cupboards and drawers and fitted matching wall cupboards. Integrated appliances include a stainless steel four ring gas hob with an extractor hood above and an integrated stainless steel electric oven below, a washing machine and a fridge/freezer. The dining area provides the ideal space to entertain family and friends. The hallway, WC and kitchen/diner have Kardean fitted flooring. The living room is a generous open space with a uPVC double glazed window overlooking the rear garden. Radiator, feature panelled wall, and a set of uPVC double glazed French patio doors lead to the rear garden.

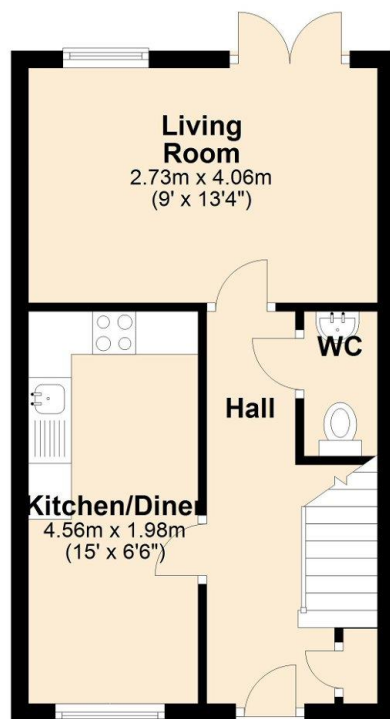
First floor accommodation

Landing. Access to the insulated boarded loft space with built in ladder. The property offers two double bedrooms. The master bedroom is found to the rear of the property with a uPVC double glazed window offering views towards the surrounding countryside, with a radiator and power points. The second bedroom has a uPVC double glazed window, radiator, built in cupboard housing the wall mounted gas boiler and a recessed area for a dressing table or wardrobe. The accommodation concludes with a modern family bathroom. Part tiled walls, panelled bath with shower over, pedestal wash hand basin, WC, wall mounted heated towel rail.



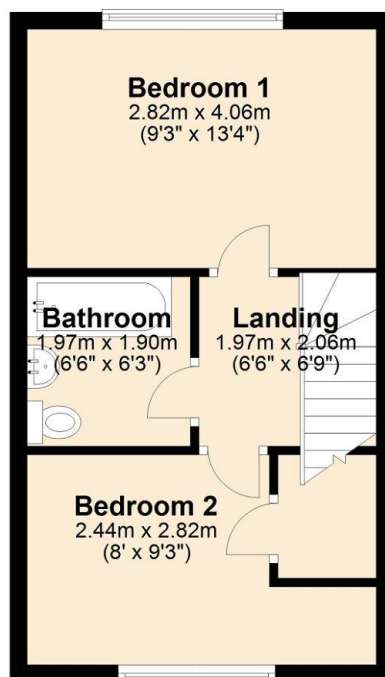
Ground Floor

Approx. 30.1 sq. metres (323.5 sq. feet)



First Floor

Approx. 30.2 sq. metres (325.3 sq. feet)



Total area: approx. 60.3 sq. metres (648.8 sq. feet)

Outside

To the front of the property is a driveway, providing parking for two vehicles with access to the rear garden via a side timber gate. The rear garden is laid to lawn and is bordered by timber fencing with an expanse of a patio giving access onto a decked sun terrace with external power points, tap and access to the living room via a set of uPVC double glazed French patio doors. Access can be obtained to the double length driveway via a side timber gate.

EPC:B

COUNCIL TAX BAND: B

TENURE: FREEHOLD

For more information on this house or to arrange a viewing please call the office on:

01626 798440

Alternatively, you can scan below to view all of the details of this property online.



88 Queen Street
Newton Abbot
Devon
TQ12 2ET