



hamlyn  
smith.


Westview Close, Peacehaven, BN10 8GA



# hamlyn smith.

 4 Bedrooms

 1 Reception

 2 Bathrooms

Hamlyn Smith are proud to present this well proportioned four-bedroom townhouse with Juliette balcony and views over playing fields to the rear. Well presented throughout, the property is located in the popular residential area of Peacehaven and also benefits from a fantastic West facing garden, allocated parking space and garage.

- Four bedrooms
- Two bathrooms and separate WC
- Set over three floors
- Rear garden and Juliette balcony
- Garage and allocated parking
- No onward chain

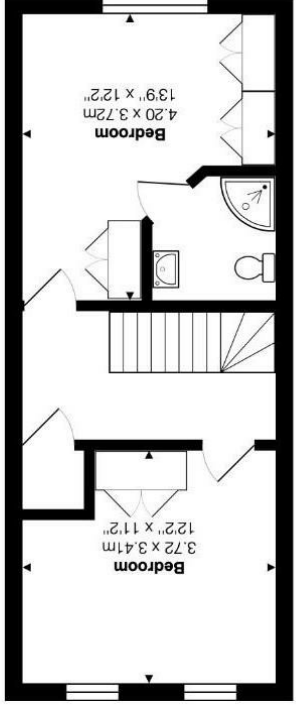
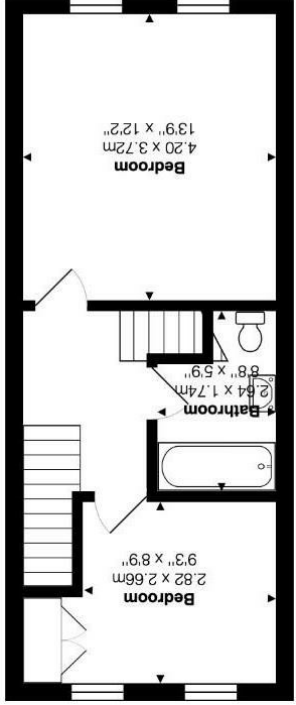
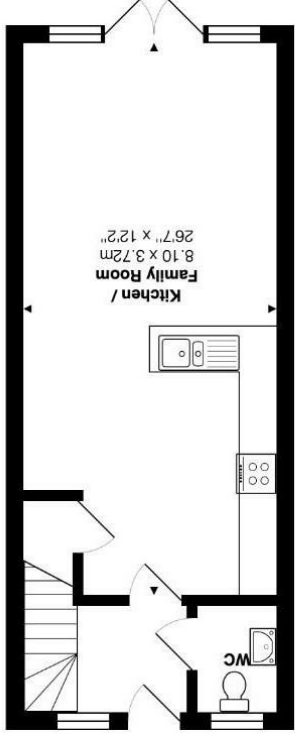








**Property Description**  
Originally built by Bovis Homes, this property is situated on the popular Meridian End residential development in Peacehaven. With both the South Downs National Park and the coastline minutes from your doorstep, Westview Close provides an excellent mix of coast and country living. The property itself fronts onto a communal green open space and comes with an allocated parking space to the rear. The internal accommodation comprises; pleasant entrance hallway with WC, leading to an open plan kitchen and living space. The shaker-style kitchen with integrated appliances and breakfast bar splits the room to allow for a separate dining and lounge area to the rear of the property. Double doors open out onto the West facing, low-maintenance garden with rear access to the parking bay. The first floor is home to a second reception or large double bedroom, the family bathroom, and a further small double with East facing Juliette balcony. The second floor has two further double bedrooms both of which come with fitted wardrobes and one with an en-suite shower room.



Total Area: 109.6 m<sup>2</sup> ... 1180 ft<sup>2</sup>