



hamlyn
smith.

Denmark Villas, Hove, BN3 3TJ

£300,000

hamlyn smith.



1 Bedroom



1 Reception



1 Bathroom

A wonderful opportunity to purchase a newly refurbished first-floor, one-bedroom apartment on Denmark Villas, just minutes from Hove Station.

- 1 Bedroom Apartment
- Newly Refurbished
- High Standard
- Brand New Kitchen & Bathroom
- Moments From Hove Station
- No Onward Chain







hamlyn smith.

📍 50 Goldstone Villas, Hove, BN3 3RS

☎ 01273 762222

✉ hello@hamlynsmith.co.uk

Set within an elegant four-storey Victorian building on a tree-lined street, the apartment is approached by steps leading up to a grand arched porch and communal hallway. Inside, high ceilings and generously proportioned rooms create a great sense of space, with a striking reception room at the front featuring a wide bay window.

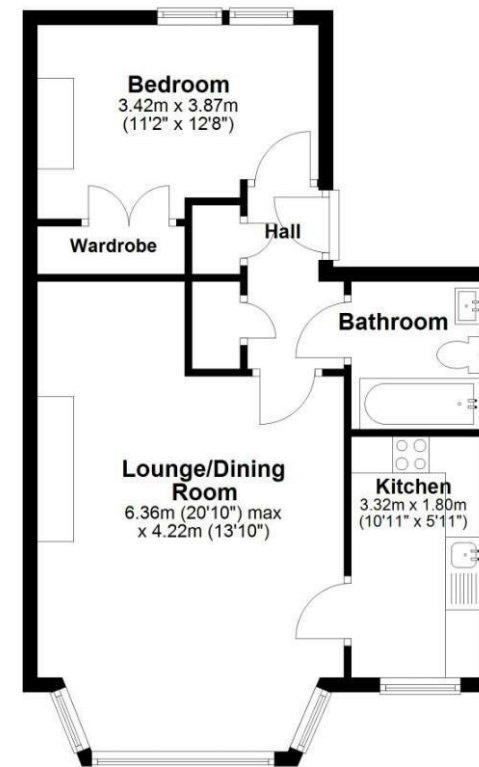
The flat has been refurbished throughout and fitted with new carpets. The kitchen, accessed from the living room, has a large west-facing sash window and contemporary green cabinetry with brass fittings. New appliances include an electric fan oven, hob and integrated fridge, and the Vaillant combination boiler is neatly housed within a matching cabinet.

The spacious bedroom sits at the rear of the flat, enjoying a peaceful outlook over neighbouring gardens and featuring a built-in wardrobe. The bathroom is immaculately presented with a new modern white suite. The hand basin is set in a vanity unit with useful storage, and there is a thermostatic shower over the bath with both waterfall and hand-held heads.

Hove Station is just moments away, providing direct services to London Victoria and Littlehampton. The No. 7 bus – one of the city's most frequent routes – runs all the way to Brighton Marina via Seven Dials, the city centre and Kemp Town. The area has a welcoming community feel, with a wide choice of cafés, pubs and shops along Goldstone Villas, George Street, Portland Road and Blatchington Road. Parks such as Hove Park and St Ann's Well Gardens are within easy reach, while a large Tesco on Church Road and Goldstone Retail Park, home to major stores including TK Maxx and Lidl, add to the convenience of the location.



First Floor



Total area: approx. 50.2 sq. metres (540.3 sq. feet)

Please note that the roof terraces have not been included in the square meterage. Whilst every attempt has been made to ensure the accuracy of the floor plan contained here, measurements of doors, windows, rooms and any other items are approximate and no responsibility is taken for any error, omission or mis-statement. This plan is for illustrative purposes only and should be used as such by any prospective purchaser. The services, systems and appliances shown have not been tested and no guarantee as to their operability or efficiency can be given.

Plan produced using PlanUp.

Denmark Villas

hamlyn
smith.
Denmark Villas, Hove