



hamlyn
smith.


High Street, Henfield, BN5 9DE

£210,000

hamlyn smith.

 2 Bedrooms

 1 Reception

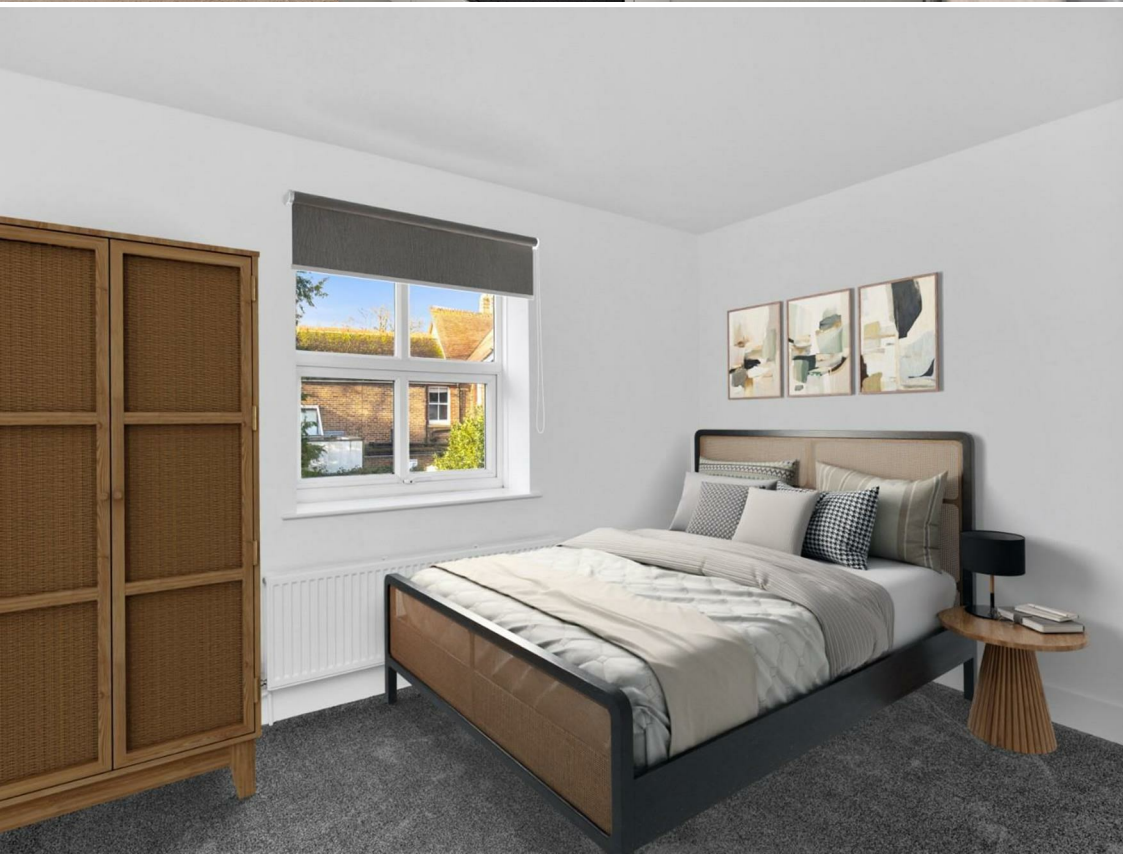
 1 Bathroom

This well-presented and generously proportioned two-bedroom first floor flat is ideally situated just off the village High Street, offering an excellent opportunity for first-time buyers or buy-to-let investors. The property is filled with natural light and has been recently updated with new fixtures and fittings, fresh decoration, and newly laid carpets throughout.

- Two bedroom apartment
- Newly refurbished throughout
- Allocated parking
- No onward chain
- Council tax band - B







hamlyn smith.

📍 50 Goldstone Villas, Hove, BN3 3RS

☎ 01273 762222

✉ hello@hamlynsmith.co.uk

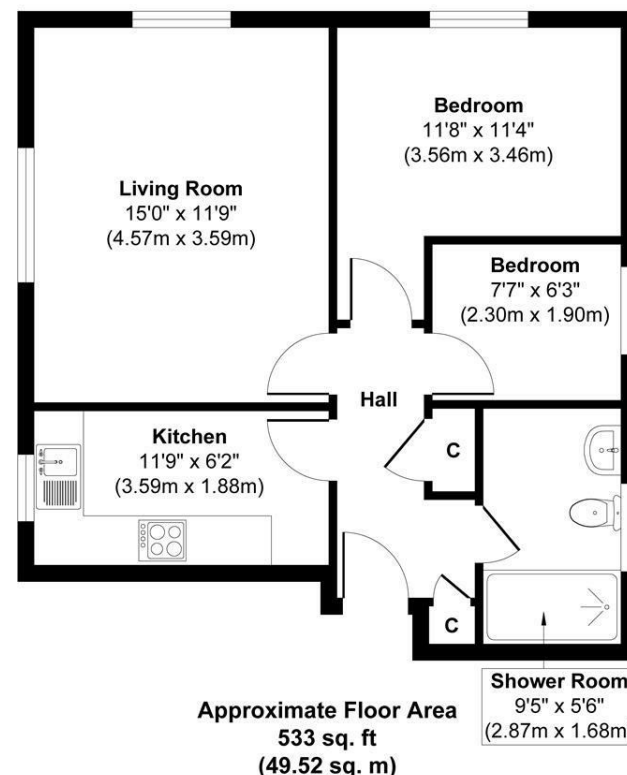
The private entrance opens into a welcoming hallway with two useful storage cupboards. The accommodation includes a spacious sitting and dining room, a kitchen fitted with attractive light sage wall and base units, a comfortable double bedroom, and a second bedroom that could serve equally well as a single room, study, or dressing room. There is also a modern shower room featuring a generously sized double shower.

The property further benefits from an off-road parking space and is presented in excellent condition throughout. Early viewing is highly recommended.

The village sits on the edge of the South Downs National Park and has a thriving community with a range of independent shops, cafés, pubs, and a Sainsbury's Local. The leisure centre has a gym, tennis courts, and offers various classes. The Downs Link cycle and walking trail passes through the village, and The Cabin at Berretts Farm is a popular stop for tea, coffee, and cakes.

Regular bus services link Henfield with Brighton, Horsham, and Burgess Hill. The A23 and Gatwick are easily accessible by road, and nearby Hassocks station (around 15 minutes by car) offers Thameslink and Southern services to London, Brighton, and the south coast.

High Street
Approx. Gross Internal Floor Area
533 sq. ft / 49.52 sq. m



Whilst every attempt has been made to ensure the accuracy of the floorplan shown, all measurements, positioning Fixtures fittings and any other data shown are an approximate interpretation for illustrative purposes only and are not to scale. No responsibility is taken for any errors, omission, miss-statement or use of data show

Produced by Home Focus Studio LTD

