



FOR SALE  
hamlyn  
smith

hamlyn  
smith.

Lorna Road, Hove BN3 3EP

£300,000



# hamlyn smith.



1 Bedroom



1 Reception



2 Bathrooms

Hamlyn Smith is delighted to offer for sale this well presented second and third-floor maisonette, occupying the upper part of a converted Victorian property, ideally located within central Hove, with the advantages of Hove & Brighton mainline stations just a short walk away, making this a perfect purchase for buyers who wish to commute, as well as having Hove and Brighton City Centres within easy reach.

- Large 1 Bedroom Maisonette
- 605 Sq Ft
- Newly Renovated Bathrooms
- Central Hove Location
- No Onwards Chain
- Close Proximity To Hove Mainline station







hs.



📍 1 Hova Villas, Hove, BN3 3DH

☎ 01273 762222

✉ hello@hamlynsmith.co.uk

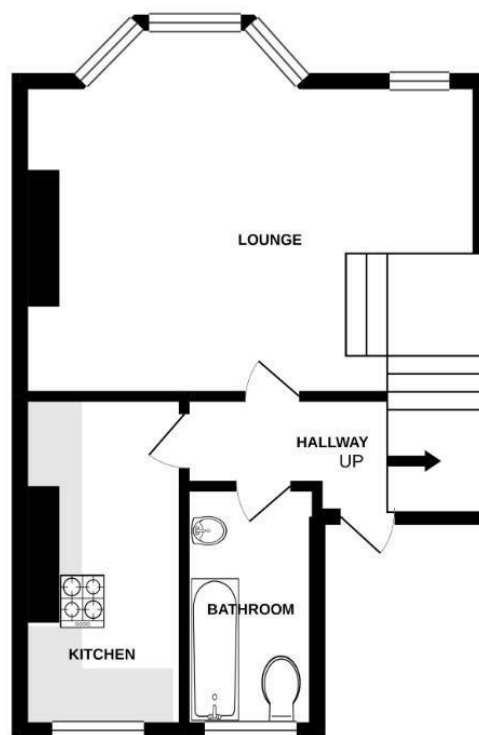
## Property Description

This large 1-bedroom apartment is arranged over two floors, it offers well-proportioned accommodation and the flat itself boasts modern comforts whilst still retaining all its period charm.

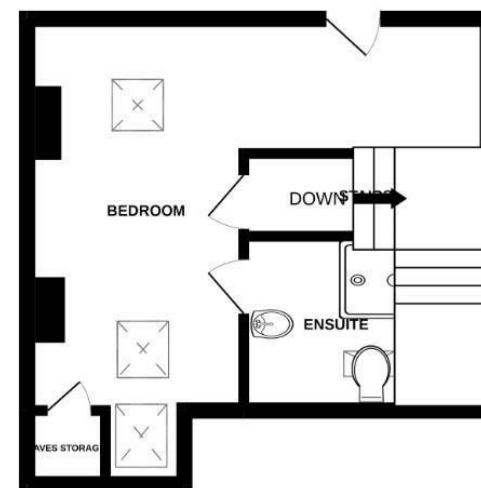
On entering the apartment, you are welcomed into the stylish, clean-lined entrance hall, which benefits from a warming, bright, and airy ambiance. The large south-facing living room is at the front of the building which is flooded with natural light and boasts plenty of space for entertaining. To the left of the hallway, you will find a recently renovated bathroom with a shower over bath, and good-sized kitchen with views looking north overlooking the rooftops of Hove. Upon entering the upper floor, you will find a good-sized double bedroom with a newly renovated en-suite shower room and plenty of storage space.

In such a distinct, esteemed location with every amenity on your doorstep, Lorna Road leaves little to be desired.

LOWER LEVEL  
354 sq.ft. (32.9 sq.m.) approx.



TOP FLOOR  
251 sq.ft. (23.3 sq.m.) approx.



TOTAL FLOOR AREA : 605 sq.ft. (56.2 sq.m.) approx.

Whilst every attempt has been made to ensure the accuracy of the floorplan contained here, measurements of doors, windows, rooms and any other items are approximate and no responsibility is taken for any error, omission or mis-statement. This plan is for illustrative purposes only and should be used as such by any prospective purchaser. The services, systems and appliances shown have not been tested and no guarantee as to their operability or efficiency can be given.  
Made with Metropix ©2021