



**hamlyn
smith.**


Coronation Street, Brighton, BN2 3AQ

£1,500 Per month

hamlyn smith.

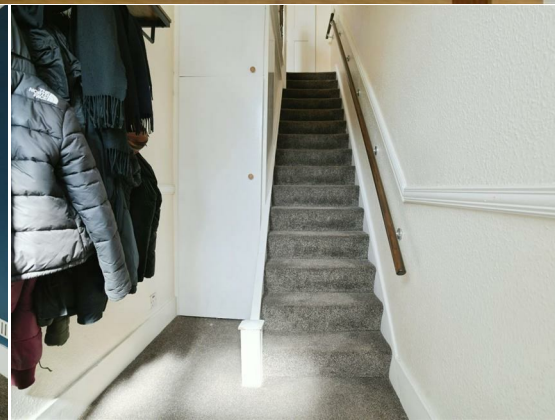
 2 Bedrooms

 1 Reception

 1 Bathroom

A two bedroom maisonette close to Elm Grove, moments away from shops and cafes and only 15 minutes walk from Brighton station and the North Laine.

- Two Bedroom Maisonette
- Own Street Entrance
- Open Plan Kitchen / Living Area
- Energy Rating - C
- Council Tax Band - B
- Parking Zone - V
- Close To Elm Grove
- Part-Furnished





hamlyn smith.

📍 50 Goldstone Villas, Hove, BN3 3RS

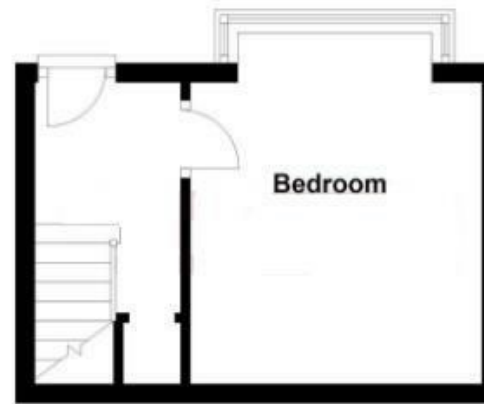
☎ 01273 762222

✉ hello@hamlynsmith.co.uk

This charming 2-bedroom maisonette occupies half of a 3-story property nestled in a pleasant street just off Elm Grove. Featuring its own street entrance, the property boasts 2 good-size double bedrooms, an inviting open-plan kitchen/living room, and a shower room.

Elm Grove is a fantastic location for anyone wanting to live in the heart of Brighton's bustling community. You can walk to the North Laine in 15 minutes and there are bus routes only moments away that will take you all over Brighton, including of course, down to the seafront. For commuters, Brighton station is 15 minutes walk where there are fast Thameslink and Southern services to London.

Ground Floor



First Floor

