



hamlyn
smith.

Marine Drive, Brighton, BN2 5TP

£375,000

hamlyn smith.

 2 Bedrooms

 1 Reception

 1 Bathroom

Guide Price £375,000 - £400,000

Nestled on the fifth floor of the prestigious Marine Gate development, this spacious apartment boasts over 1,000 square feet of living space and breathtaking direct sea views. Perfectly located to embrace Brighton's vibrant coastal lifestyle, this property offers an excellent opportunity for personalization and improvement.

- Two bedroom apartment
- Direct sea views
- Garage
- Onsite concierge
- Share of freehold
- No onward chain
- EPC rating - D
- Council tax band - D







hamlyn smith.

📍 50 Goldstone Villas, Hove, BN3 3RS

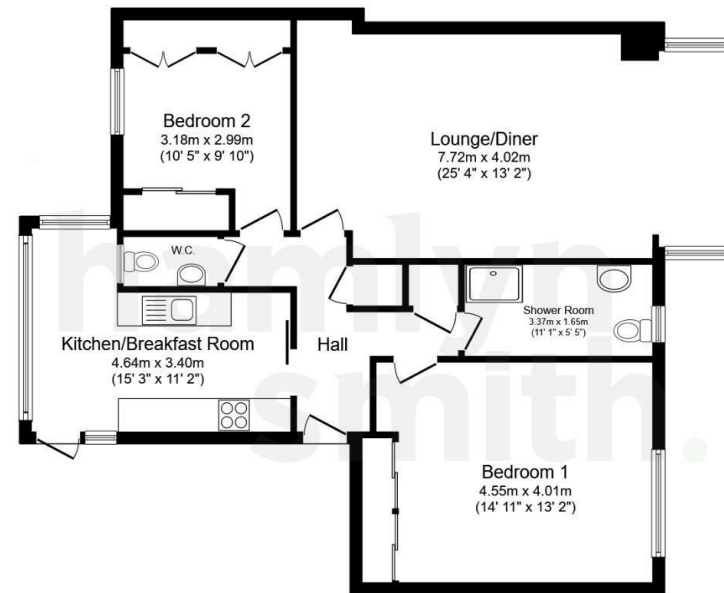
☎ 01273 762222

✉ hello@hamlynsmith.co.uk

The apartment's expansive layout provides ample room for relaxation and entertaining, all framed by panoramic views of the English Channel. A private garage adds significant value, offering secure parking or additional storage—an increasingly rare feature in Brighton. With its share of freehold, the property ensures a secure, long-term investment and reduced ground rent commitments.

Marine Gate is renowned for its exceptional amenities, including an onsite concierge and 24-hour security, offering convenience and peace of mind. This property is sold with no onward chain, simplifying the purchasing process for a swift and seamless transaction.

With scope for modern updates and a prime location close to the Marina and city center, this apartment is perfect for those seeking a permanent home, a coastal retreat, or a sound investment opportunity. Arrange a viewing to appreciate the vast potential and stunning views this remarkable property offers.



Floor Plan

Floor area 93.2 m² (1,004 sq.ft.)

TOTAL: 93.2 m² (1,004 sq.ft.)

This floor plan is for illustrative purposes only. It is not drawn to scale. Any measurements, floor areas (including any total floor area), openings and orientations are approximate. No details are guaranteed, they cannot be relied upon for any purpose and do not form any part of any agreement. No liability is taken for any error, omission or misstatement. A party must rely upon its own inspection(s). Powered by [www.Propertybox.io](https://www.propertybox.io)

