



**hamlyn  
smith.**

Ravenswood Drive, Woodingdean

£400,000 - £425,000

# hamlyn smith.

 3 Bedrooms

 2 Reception

 2 Bathrooms

Guide Price £400,000 - £425,000

A 3 bedroom, detached family home on Ravenswood Drive, Woodingdean.

The property benefits from a large, garden, Driveway & Garage.

- A Detached Family Home
- 3 Double Bedrooms
- En Suite To Master Bedroom
- Large Rear Garden
- Driveway & Garage
- No Onwards Chain.





# hamlyn smith.

📍 50 Goldstone Villas, Hove, BN3 3RS

☎ 01273 762222

✉ hello@hamlynsmith.co.uk

This rare detached house is a modern, well-presented, and spacious property, located on the highly sought-after residential road of Ravenswood Drive in Woodingdean. Situated just off Cowley Drive, the house offers views of surrounding farmland. The area is well-served by frequent and regular buses, and nearby you'll find a wide range of shops and amenities. Families will appreciate the proximity to Rudyard Kipling School, as well as other educational institutions from nursery to high school in neighboring Ovingdean. Several parks and Downland, popular for dog walking and enjoying the countryside, are within walking distance.

The house features light-filled, well-planned living accommodation. On the ground floor, you'll find an entrance hall, a separate modern fitted kitchen, an open-plan lounge/diner with doors leading to the rear garden, and a cloakroom with a W.C.

The first floor comprises three double bedrooms, with the master bedroom featuring built-in wardrobes and an en suite shower room. Additionally, there is a family bathroom, providing a total of two bathrooms plus a WC in the property—ideal for a family with young children.

Outside, the property boasts a generously sized, sunny rear garden with a patio area and a large lawn. The garden is fully enclosed, making it a safe and secure space for children and pets to play. There's plenty of room for garden furniture, a football goal, a vegetable or herb patch, and is perfect for sunbathing and summer garden parties.

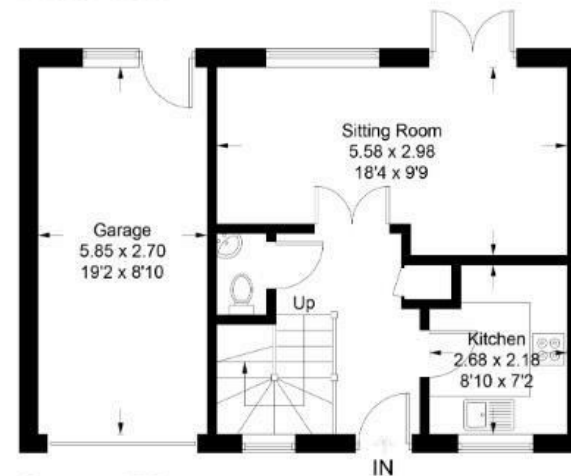
At the front of the house, there is a lawned garden and a hard-standing driveway for off-road parking, leading to your private garage. This house truly ticks every box!

Ravenswood Drive, Woodingdean, BN2 6WL

Approximate Gross Internal Area = 99.3 sq m / 1069 sq ft



First Floor



Ground Floor

