



**hamlyn  
smith.**


38 Salisbury Road, Hove, BN3 3AA

£1,395 PCM

# hamlyn smith.

 2 Bedrooms

 1 Reception

 1 Bathroom

Please note we are now fully booked for viewings. A charming ground floor two-bedroom flat, located on Salisbury Road a sought-after area of Hove.

Set back from Palmeira Square within a well-maintained purpose built complex, an immaculately presented home incorporates a modern open plan kitchen/living room, two bedrooms and a stylish contemporary bathroom.

Conveniently situated on a wide tree-lined road, this stunning apartment is located near to the shops and amenities of Church Road and a short walk away from Hove mainline train station.

- Two Bedroom Apartment
- Ground Floor
- Modern Finish Throughout
- Energy Rating - E
- Council Tax Band - B
- Central Hove Location
- Unfurnished
- Available 27th September









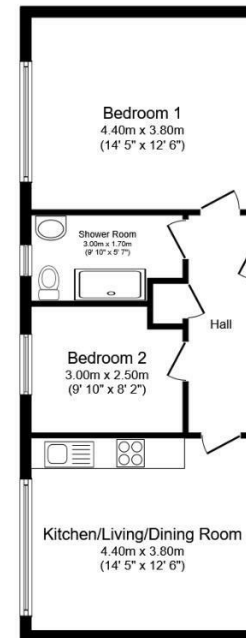
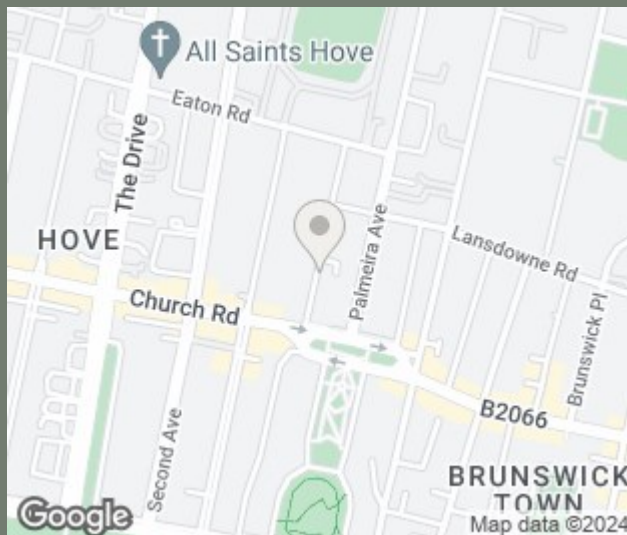
# hamlyn smith.

 50 Goldstone Villas, Hove, BN3 3RS

 01273 762222

 hello@hamlynsmith.co.uk

Salisbury Road is in the heart of Hove and one of the most sought after roads in the area due to its immediate proximity to the vibrant bars, restaurants and shops of Church Road, Western Road and Palmeira Square. Local transport options include Hove Station which is just a short walk from the property and the bottom of the road is well served by a variety of regular bus routes. Available from 27th September and offered unfurnished.



## Floor Plan

Floor area 53.2 m<sup>2</sup> (573 sq.ft.)

TOTAL: 53.2 m<sup>2</sup> (573 sq.ft.)

This floor plan is for illustrative purposes only. It is not drawn to scale. Any measurements, floor areas (including any total floor area), openings and orientations are approximate. No details are guaranteed, they cannot be relied upon for any purpose and do not form any part of any agreement. No liability is taken for any error, omission or misstatement. A party must rely upon its own inspection(s). Powered by www.Propertybox.io