



**hamlyn
smith.**


Stanstead Crescent, Brighton, BN2 6TQ

Guide price
£375,000 - £400,000

hamlyn smith.

 3 Bedrooms

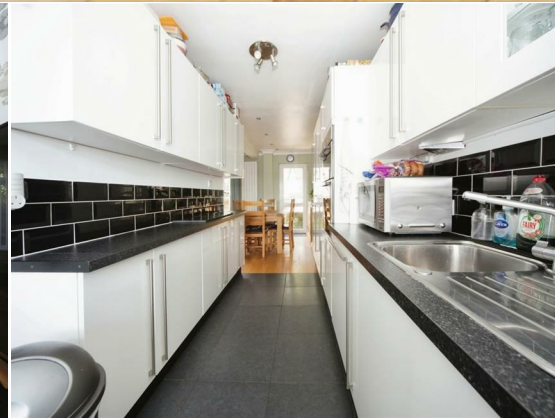
 2 Receptions

 1 Bathroom

****Guide price £350,000 - £375,000****

Presenting Stanstead Crescent to the market, a delightful three-bedroom home situated in the residential area of Woddingdean on the outskirts of Brighton. This property offers a perfect blend of contemporary design and comfortable living, making it an ideal choice for families and professionals alike.

- Three bedroom family home
- Open plan kitchen/diner
- Elevated position with views to the South West
- Large rear garden backing on to the South Downs
- Well presented throughout
- No onward chain





hamlyn smith.

📍 50 Goldstone Villas, Hove, BN3 3RS

☎ 01273 762222

✉ hello@hamlynsmith.co.uk

Three Bedrooms: This home features three good sized bedrooms, each offering a cozy and comfortable space. The two bedrooms at the front of the property are particularly spacious with elevated views towards the sea.

Modern Shower Room: The property includes a sleek and stylish modern shower room, designed with contemporary fittings and finishes. The room is both functional and luxurious, providing a refreshing start to your day.

Open Plan Kitchen/Diner: The heart of the home is the impressive open plan kitchen and dining area. This space is perfect for entertaining guests or enjoying family meals together. The seamless flow between the kitchen and dining area enhances the sense of space and connectivity.

Light and Airy Feel: Large windows and a thoughtful layout ensure that the entire home benefits from an abundance of natural light, creating a bright and airy atmosphere throughout. The open-plan design and neutral decor further enhance the feeling of spaciousness.

Modern Kitchen with High Gloss White Finish: The contemporary kitchen is a standout feature, boasting high gloss white units and modern appliances. Ample storage and sleek countertops make this kitchen both practical and stylish, ideal for any home chef.

Tired Rear Garden: The property includes a rear garden that, while currently tired, presents a fantastic opportunity for customization. With some care and creativity, this outdoor space can be transformed into a beautiful garden, perfect for relaxation and outdoor activities.

Convenient Location: Situated in a desirable area of Woodingdean, Stanstead Crescent is within easy reach of local amenities, schools, and transport links. The bustling city centre, with its diverse array of shops, restaurants, and entertainment options, is just a short distance away.

This property offers a wonderful opportunity to own a stylish and comfortable home in a prime location. Contact us today to arrange a viewing and see for yourself all that Stanstead Crescent has to offer.

Ground Floor

Approx. 46.9 sq. metres (505.3 sq. feet)



First Floor

Approx. 40.4 sq. metres (435.4 sq. feet)

