



hamlyn
smith.


Greenways, Henfield, BN5 9TZ

£600,000

hamlyn smith.

 3 Bedrooms

 2 Receptions

 1 Bathroom

Guide Price £600,000 - £650,000

A large 3 bedroom, corner plot bungalow located in a popular cul-de-sac in Henfield.

The property benefits from a large wrap around garden, a garage, and a driveway for multiple cars.


- 3 Bedroom Detached Bungalow
- Corner Plot
- Garage
- Large Driveway
- Popular Residential Location
- No Onward Chain





hamlyn smith.

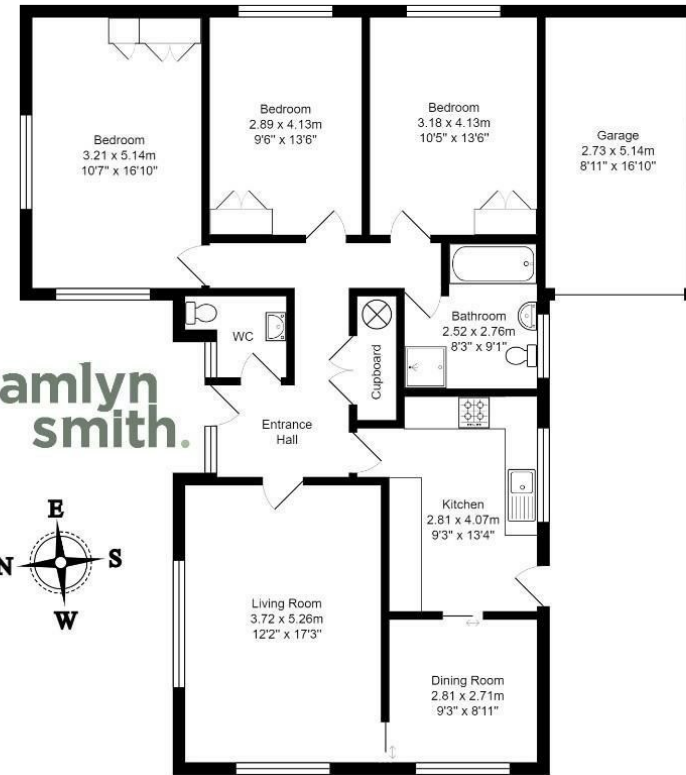
 50 Goldstone Villas, Hove, BN3 3RS

 01273 762222

 hello@hamlynsmith.co.uk

Hamlyn Smith are delighted to bring to the market this fantastic detached corner plot bungalow, situated in a quiet residential close, just moments from the centre of Henfield. As soon as you approach this house you will begin to appreciate its charms; as well as its location in this peaceful and pretty cul-de-sac, it is set back from the road with a lawned wrap around garden which is well stocked with mature trees and shrubs. As well as unrestricted parking on the road, the house has its own driveway for multiple cars, and a garage. On entering the property you are welcomed into a central hallway where you will find a large cloakroom, which could easily be converted into a modern shower room with W/C. Off the central hallway you will find a spacious living room that opens up to a private dining room, which is well positioned next to the kitchen. The kitchen is fitted with a good range of base units and wall cabinets with plenty of workspace on the counters. The bedrooms are all a good size and the master bedroom is particularly spacious. The bathroom is centrally located off the hallway close to the bedroom.

Greenways is just a short walk into Henfield village. Henfield is blessed with four pubs and numerous cafes, its own school and a thriving public library. The Downs Link cycle and footpath which runs from Shoreham to Guildford can be joined close by. The popular Cabin at Berrett's Farm, just off the footpath, serves tea and coffee with fantastic views. Brighton is only a short drive away and there is easy access by road to the A23 and to Gatwick. Hassocks train station is a 15-minute drive, from where there are regular Southern and Thameslink services to London Victoria, London Bridge, Bedford, Brighton, Littlehampton and Worthing.



Greenways, Henfield, BN5 9TZ

Total Area: 122.6 m² ... 1320 ft²

All measurements are approximate and for display purposes only.