



Manchester Road, Battle, TN33

£390,000

 3  1  1  1085 sq ft

Paul Stripp Estate Agent

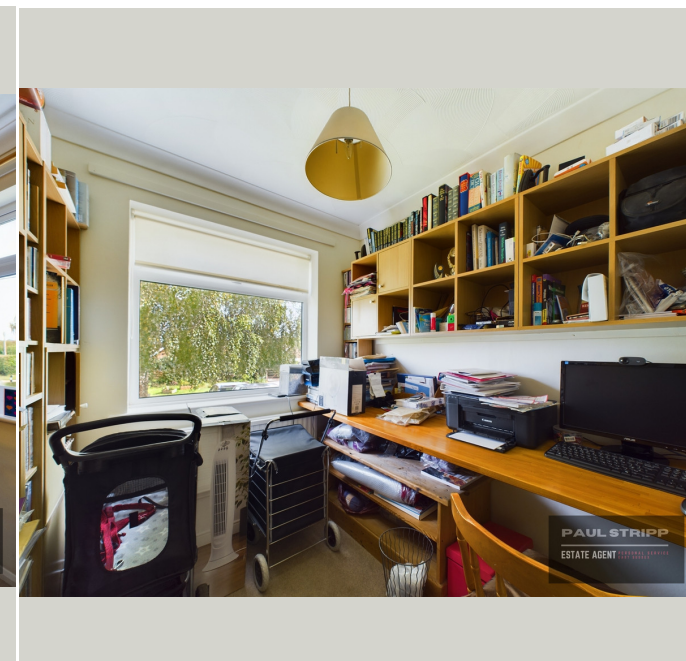
[paulstrippestateagent.com/](http://paulstrippestateagent.com/) | 01424 772954

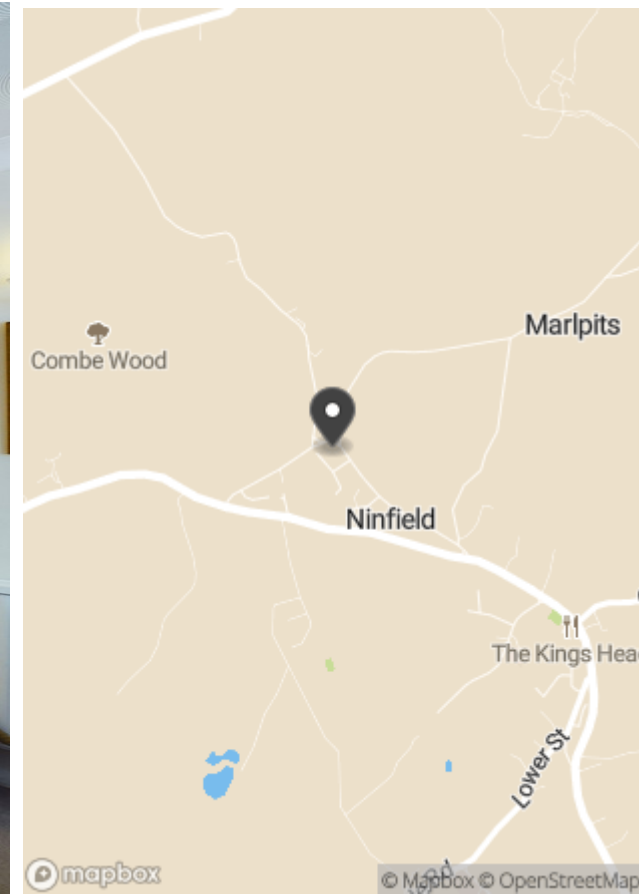
**PAUL STRIPP**

**ESTATE AGENT** PERSONAL SERVICE  
EAST SUSSEX



- Detached bungalow in a quiet lane location
- Single garage plus off-street parking for multiple vehicle
- Within Claverham school catchment and a short drive to amenities in Bexhill and Battle
- Elevated corner plot garden that wraps around the property
- Versatile layout with two/three bedrooms
- Contemporary kitchen fitted with modern appliances and ample storage
- Spacious sitting/dining room with large windows for natural light
- Sunlit conservatory offering panoramic views of the garden
- Separate utility room for laundry and additional storage
- Chain free







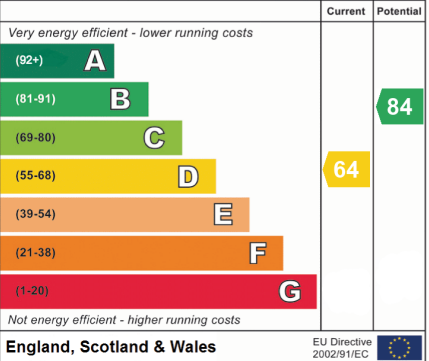
Approximate total area<sup>(1)</sup>  
1085.57 ft<sup>2</sup>  
100.85 m<sup>2</sup>

(1) Excluding balconies and terraces

While every attempt has been made to ensure accuracy, all measurements are approximate, not to scale. This floor plan is for illustrative purposes only.

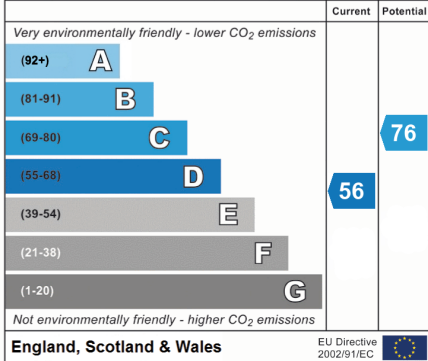
GIRAFFE360

**Energy Efficiency Rating**



England, Scotland & Wales EU Directive 2002/91/EC

**Environmental Impact (CO<sub>2</sub>) Rating**



England, Scotland & Wales EU Directive 2002/91/EC

**PAUL STRIPP**

**ESTATE AGENT** PERSONAL SERVICE  
EAST SUSSEX

Paul Stripp Estate Agent

18B High Street, Battle, TN33 0AE

paulstrippestateagent.com/ | 01424 772954