



Stocks Meadow, Battle, TN33

Offers In Excess Of £350,000

 3  1

Ashton Stripp

ashtonstripp.com | 01424 772954

AS
ASHTON STRIPP



A well-proportioned three-bedroom semi-detached home in Ninfield, featuring a spacious living room, three double bedrooms, and a generous rear garden.

The property includes a good-sized kitchen with a range of units, worktop space, an oven with hob, a stainless steel sink, and a pantry cupboard. A door provides access to the rear garden. The living room is carpeted, benefits from a double-aspect layout, and has a radiator. The entrance hallway includes a radiator and a downstairs cloakroom with a window.

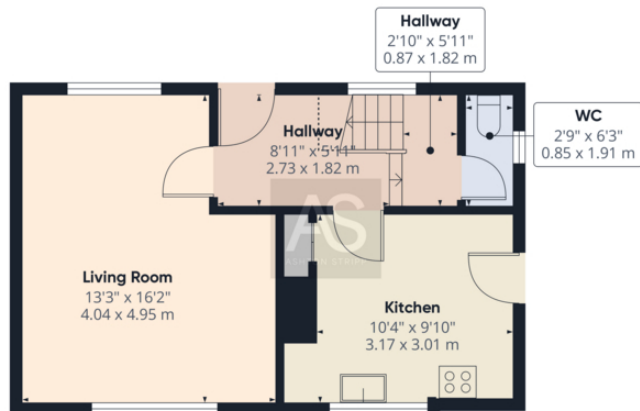
Upstairs, there are three double bedrooms. The front-aspect main bedroom has a radiator, while the second bedroom overlooks the rear garden. The third bedroom includes two cupboards, one housing the water tank, and a separate wardrobe unit. The family bathroom is fully tiled and comprises a bath, WC, radiator, and window.

The property is heated via an oil-fired central heating system, which has been recently serviced. Externally, there is a front lawn area, and the rear garden provides an attractive outdoor space.

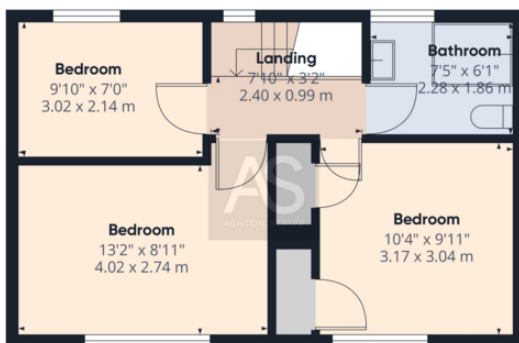


- Chain free
- Three double bedrooms
- Oil central heating system, recently serviced
- Spacious living room with a double-aspect layout, offering plenty of natural light
- Good-sized kitchen with a range of units, oven with hob, and a pantry cupboard
- Downstairs cloakroom for added convenience
- Fully tiled bathroom with a bath and WC
- Well-maintained front lawn
- Lovely rear garden
- Located in the desirable village of Ninfield, with access to local amenities and countryside walks





Floor 0



Floor 1



Approximate total area⁽¹⁾

791.49 ft²
73.53 m²

Reduced headroom

10.86 ft²
1.01 m²

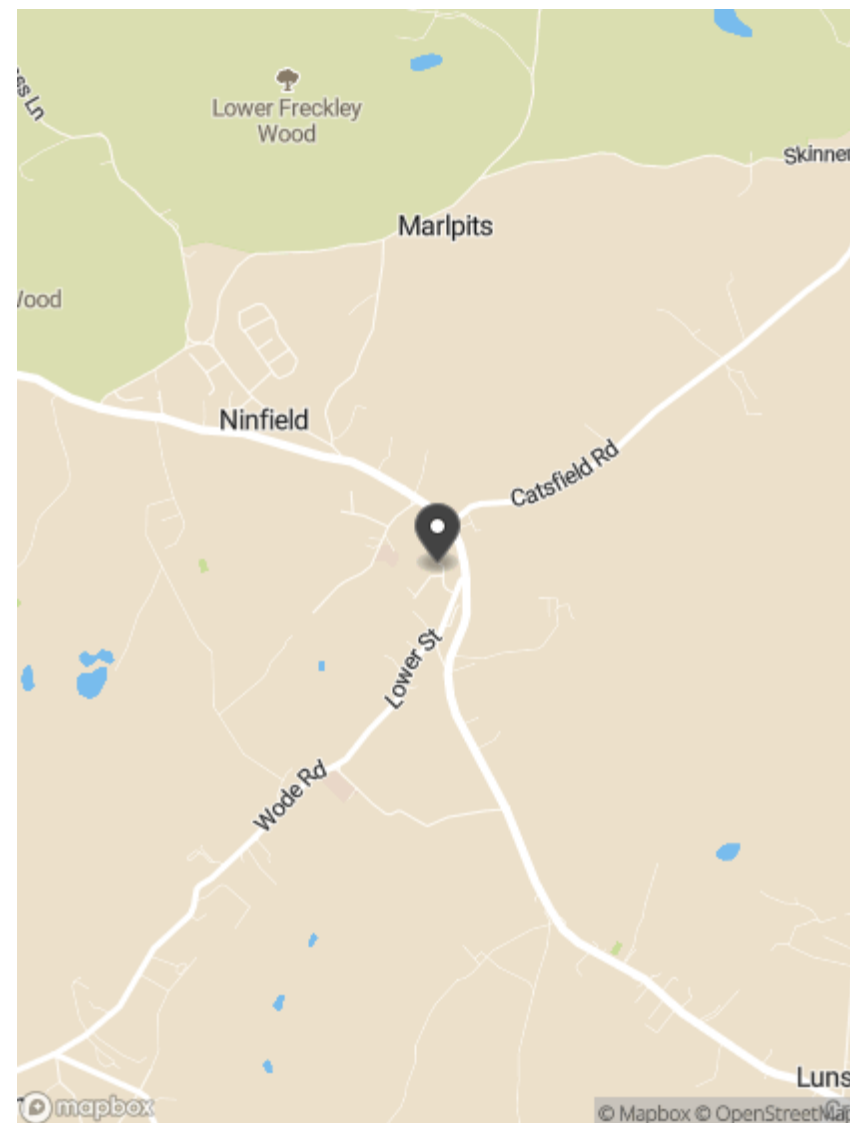
(1) Excluding balconies and terraces

Reduced headroom
..... Below 5 ft/1.5 m

While every attempt has been made to ensure accuracy, all measurements are approximate, not to scale. This floor plan is for illustrative purposes only.

Calculations were based on RICS IPMS 3C standard. Please note that calculations were adjusted by a third party and therefore may not comply with RICS IPMS 3C.

GIRAFFE360



AS
ASHTON STRIPP

Ashton Stripp

33 High Street, Battle, TN33 0AE

ashtonstripp.com | 01424 772954