



Horns Corner, Catsfield, TN33

£400,000

 3  1

Ashton Stripp

ashtonstripp.com | 01424 772954

AS
ASHTON STRIPP



A charming home featuring a front-aspect living room with a brick fireplace, a dining room with exposed floorboards, and a kitchen with white units, wooden worktops, and a pantry. Three bedrooms, a bathroom, a separate WC, and a spacious rear garden with a patio and storage outbuilding.

Entrance porch with stairwell to the first floor. Storage heater and door to understairs cupboard. Wood laminate effect flooring.

Living room on the front aspect, storage heater and brick fireplace.

Dining room with exposed floorboards and storage heater.

Kitchen with range of white cupboards and drawers, wooden worktop and pantry cupboard. Door to side porch.

Bathroom with bath and shower attachments above, and wc, sink, stainless steel radiator.

Off the landing there is a wc with window and sink.

Bedroom on front aspect with feature fireplace.

Bedroom 2 with feature fireplace, and storage cupboard.

Bedroom 3 on the rear aspect.

Outside there is a patio area and a further large area of rear lawn.

Parking for two cars.

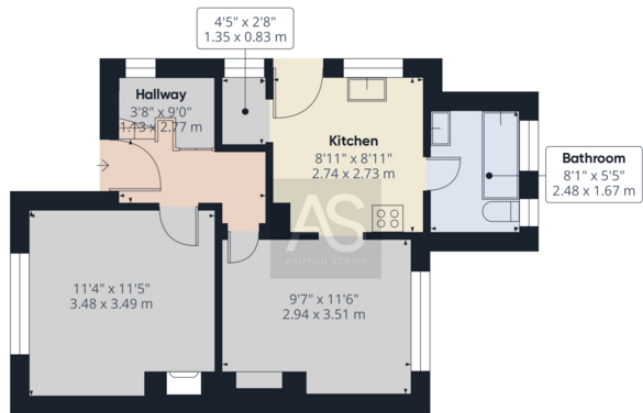
Outbuilding for storage.

Council tax band D

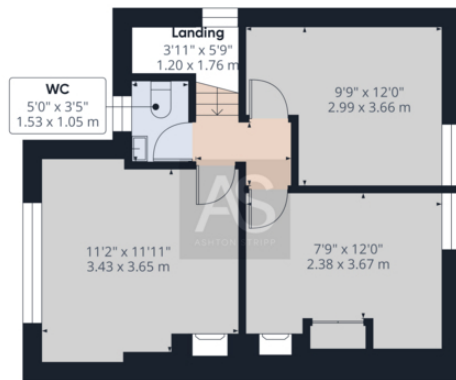


- Entrance porch with understairs storage and wood laminate flooring
- Living room with brick fireplace and front aspect
- Dining room with exposed floorboards and storage heater
- Kitchen with white units, wooden worktops, and pantry cupboard
- Side porch providing additional access
- Bathroom with bath, shower attachment, WC, and stainless steel radiator
- Separate WC with sink and window off the landing
- Three bedrooms, two with feature fireplaces, one with storage cupboard
- Spacious rear garden with patio and large lawn area
- Outbuilding for additional storage





Floor 0



Floor 1

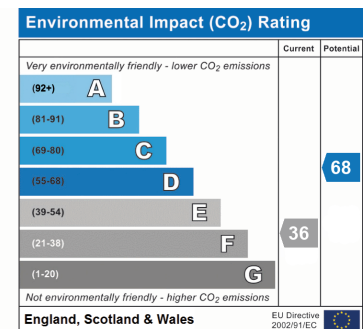
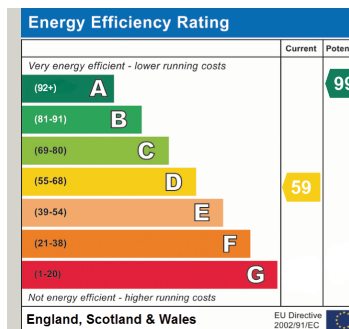
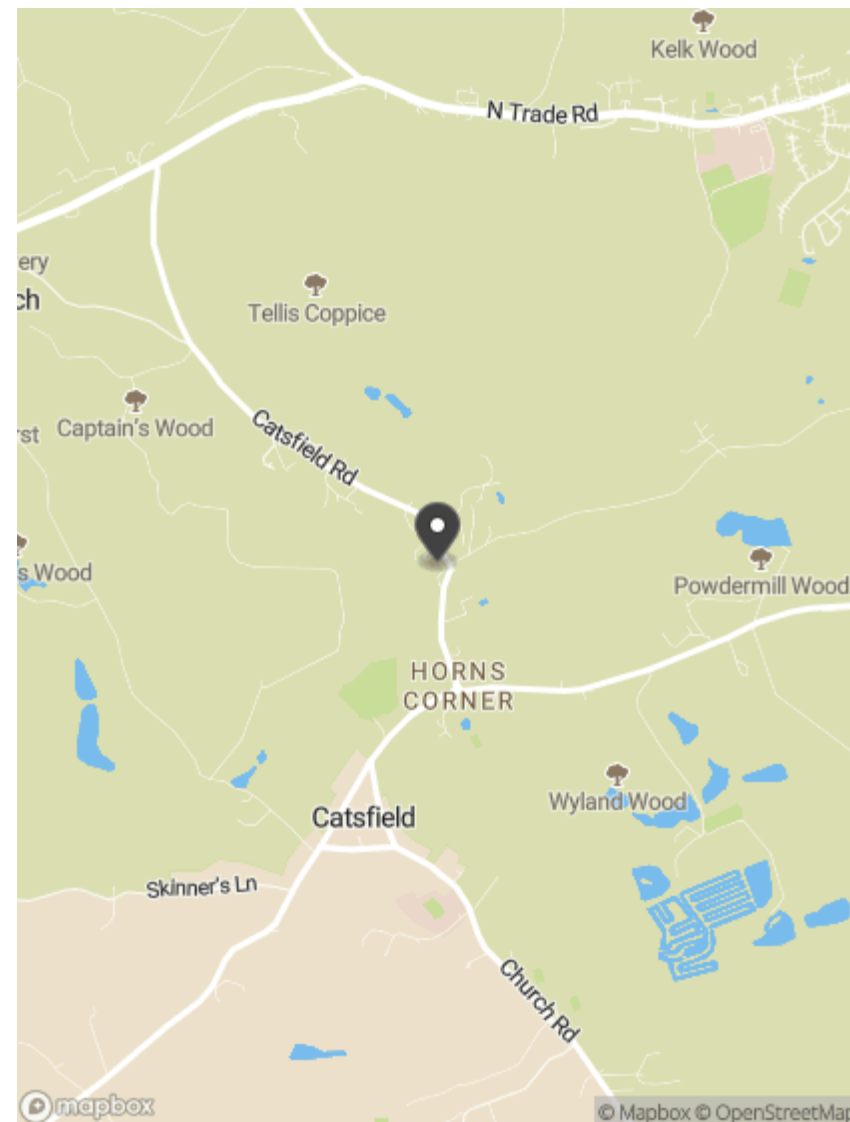


Approximate total area¹⁾
823.13 ft²
76.47 m²

(1) Excluding balconies and terraces

While every attempt has been made to ensure accuracy, all measurements are approximate, not to scale. This floor plan is for illustrative purposes only. Calculations are based on RICS IPMS 3C standard.

GIRAFFE360



AS

ASHTON STRIPP

Ashton Stripp

33 High Street, Battle, TN33 0AE

ashtonstripp.com | 01424 772954