



East Sussex, Robertsbridge, TN32

Offers In Excess Of £485,000



Ashton Stripp

ashtonstripp.com | 01424 772954

AS
ASHTON STRIPP



This beautifully presented 3-bedroom detached home offers spacious living, stylish interiors, and breathtaking countryside views. With generous living spaces and a charming garden, it's perfect for families or anyone seeking a peaceful retreat in a picturesque location.

As you step into this delightful home, you are greeted by a welcoming hallway, providing access to all principal rooms. To the side, a well-appointed shower room features a walk-in shower, sink, WC, radiator, and stylish tiling for a modern touch.

Moving forward, the dining room is a bright and inviting space, enhanced by sliding doors that open to reveal breathtaking views and a useful under-stairs cupboard provides additional storage. Adjacent to the dining area, the kitchen is thoughtfully designed with ample cabinets and drawers, a stainless steel sink, and a breakfast bar. The wood-effect laminate flooring and part-tiled walls add warmth, while space is allocated for a range cooker, large fridge, and freezer. A window overlooks the driveway, bringing in natural light. For added practicality, the utility room offers additional space for a washing machine and dishwasher, with a rear aspect window and a door leading to the side of the house. A highlight of the ground floor is the bright double-aspect living room, flooded with natural light from multiple windows. A charming woodburner adds warmth and character, making this airy and inviting space ideal for both unwinding and entertaining guests.

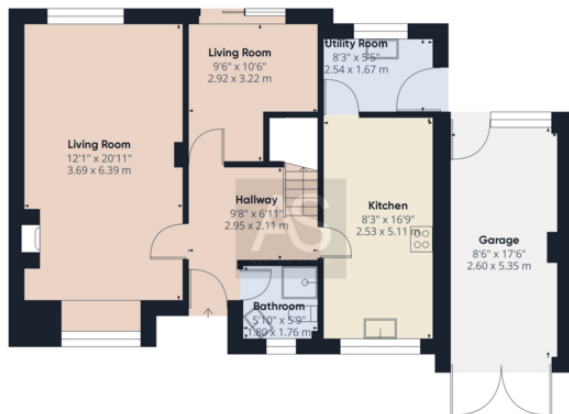
On the first floor, the main bedroom is a generously sized double featuring double-aspect windows, built-in cupboards, and stunning views of the surrounding countryside. The second bedroom is another well-proportioned double with two inbuilt storage cupboards and a front-aspect radiator. The third bedroom provides a comfortable retreat, with eaves storage and spectacular views. Completing the upper floor, the family bathroom is fitted with a bath and shower attachment, WC, sink, and fully tiled walls and flooring.

Externally, this property boasts an ample driveway and garage, ensuring off-road parking and additional storage. The garden is beautifully maintained, featuring a lush lawn, a patio for outdoor dining, and a decking area—all offering breathtaking panoramic views over the countryside.

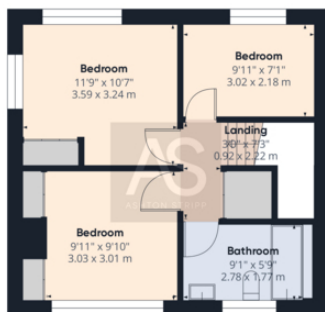


- Beautifully presented 3-bedroom detached home with stylish interiors
- Breathtaking countryside views from multiple rooms and outdoor spaces
- Bright dining room with sliding doors and under-stairs storage
- Ample driveway and garage providing off-road parking and extra storage
- Peaceful and picturesque location – ideal for families or a countryside retreat
- Well-equipped kitchen with ample cabinets, breakfast bar, and utility room





Floor 0



Floor 1



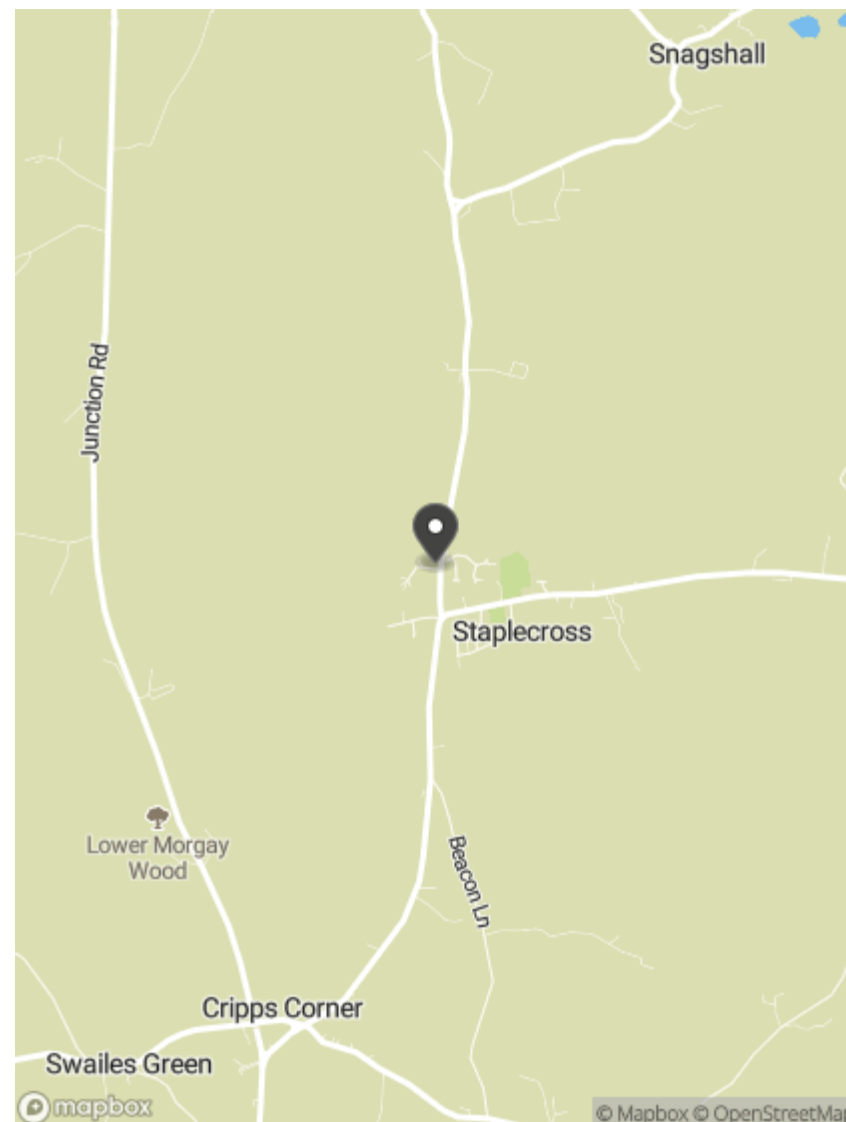
Approximate total area¹⁾
1219.75 ft²
113.32 m²

(1) Excluding balconies and terraces

While every attempt has been made to ensure accuracy, all measurements are approximate, not to scale. This floor plan is for illustrative purposes only.

Calculations are based on RICS IPMS 3C standard.

GIRAFFE 360



Ashton Stripp

33 High Street, Battle, TN33 0AE

ashtonstripp.com | 01424 772954

