



St Marys Gardens, Battle, TN33

£350,000



3



1



3



Paul Stripp Estate Agent

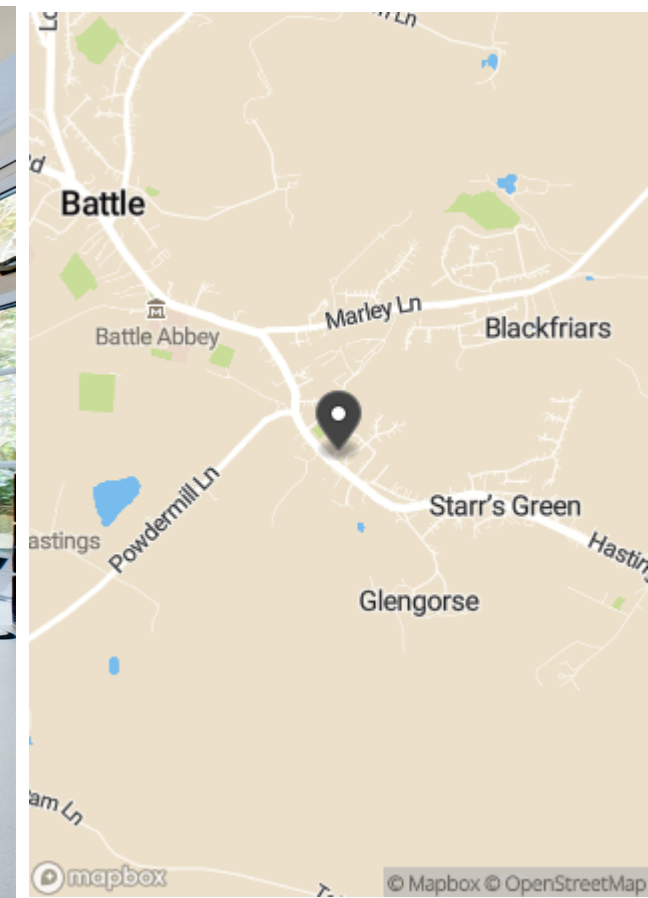
paulstrippestateagent.com/ | 01424 772954

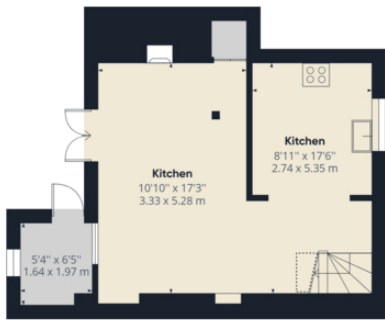
PAUL STRIPP

ESTATE AGENT PERSONAL SERVICE
EAST SUSSEX

- Parking for 2 cars
- Front courtyard with garden feature
- Modern kitchen with ample storage
- Period features plus wooden beams & exposed brick work
- Light and airy 3 bedroom cottage
- Large inglenook fireplace
- Central location
- Gas central heating
- Not Grade 2 listed
- Chain free



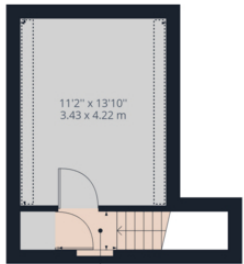




Floor 0



Floor 1



Landing
4'8" x 2'11"
1.42 x 0.91 m

Floor 2



Approximate total area⁽¹⁾
921.44 ft²
85.60 m²

Reduced headroom
33.72 ft²
3.13 m²

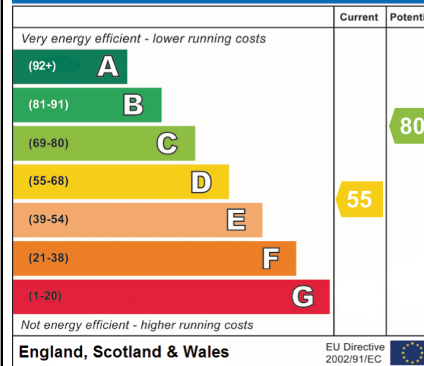
(1) Excluding balconies and terraces

Reduced headroom
(below 1.5m/4.92ft)

While every attempt has been made to ensure accuracy, all measurements are approximate, not to scale. This floor plan is for illustrative purposes only.

GIRAFFE360

Energy Efficiency Rating

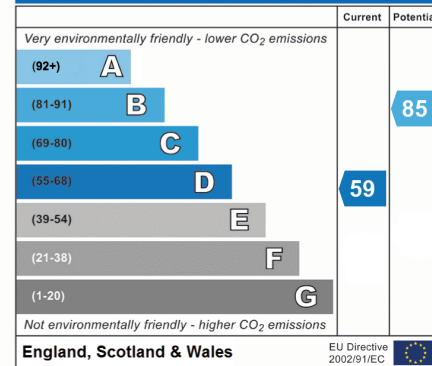


England, Scotland & Wales

EU Directive 2002/91/EC



Environmental Impact (CO₂) Rating



England, Scotland & Wales

EU Directive 2002/91/EC



PAUL STRIPP

ESTATE AGENT PERSONAL SERVICE
EAST SUSSEX

Paul Stripp Estate Agent

18B High Street, Battle, TN33 0AE

paulstripestateagent.com/ | 01424 772954