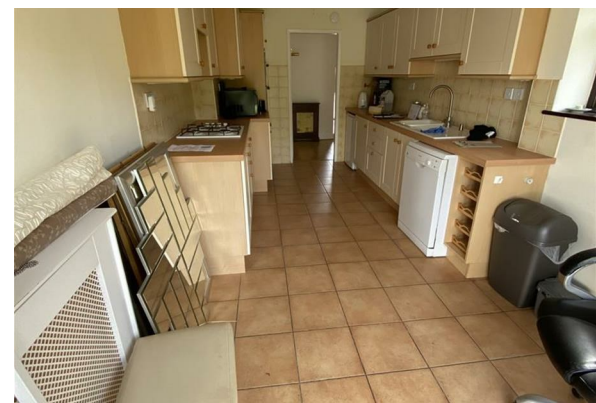




TO LET



42 Peartree Lane, Danbury, Chelmsford, CM3 4LS

£1,995

BB
brownbrand.co.uk

- AVAILABLE NOW
- LARGE GALLEY KITCHEN WITH APPLIANCES
- DINING ROOM TO THE FRONT OF THE HOUSE
- WELL ESTABLISHED GARDENS AND LOVELY FISH POND
- QUIET LOCATION
- FOUR DOUBLE BEDROOMS, EN-SUITE TO MASTER BEDROOM
- LARGE LOUNGE WITH ACCESS TO THE BACK GARDENS
- FAMILY BATHROOM
- OFF STREET PARKING FOR SIX CARS



Directions

THE PROPERTY

BROWN AND BRAND are delighted to bring to the market for let four double bed roomed detached bungalow on a third of an acre in a very quiet location. Master bedroom with en-suite shower room, three further bedrooms and family bathroom. The property has a long galley style kitchen, with fridge/freezer, dishwasher, tumble dryer to be included, access to the back garden via the patio door. The lounge is light with double patio door looking out over the well established back garden. The family dining room is situated at the front of the property and overlooks the quiet country lane. The property has a separate garage and green house. The house has been redecorated throughout, with new carpets in three of the four bedrooms. The back garden is very well established with a attractive fish pond. Maintenance and the upkeep of the gardens shall be maintained by the gardener. There is a large utility space with electricity in the back garden and a separate garage to the side of the bungalow. Off street parking for six vehicles. **COUNCIL TAX BAND F AND EPC BAND D**

SITUATION