



**Neasden Lane, Neasden NW10 1PX**

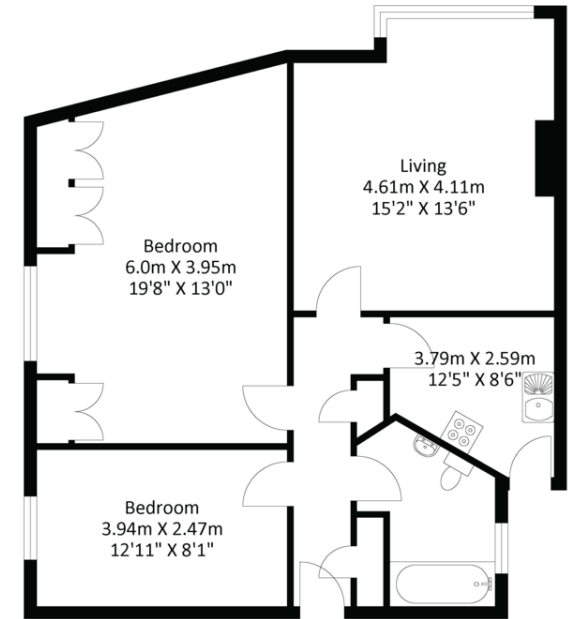
**£275,000 Leasehold**

# Neasden Lane, Neasden NW10 1PX

**£275,000 Leasehold**

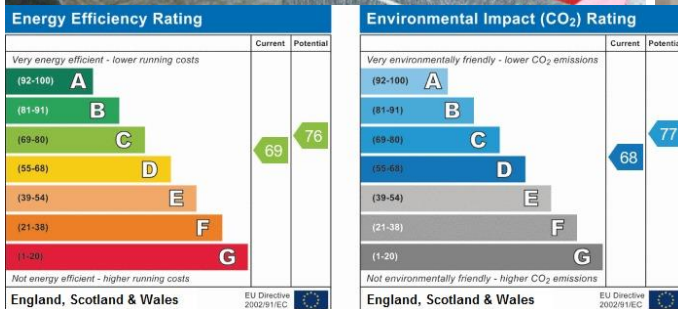
Purpose Built G/F Flat | Two Double Bedrooms | Separate Reception Room | Good Decorative Order | 60 years Remaining Lease | Close To Amenities

Current term of the lease is approximately 60 years; Empire Estates are pleased to offer for sale a deceptively spacious and well-arranged is this two double bedroom flat in the heart of Neasden arranged on the ground floor in a purpose built flat. The property boasts plenty of living space throughout and benefits from good decorative order, two spacious good sized double bedrooms, a large separate reception room, kitchen leading to communal gardens and a large family bathroom. The property is minutes walk from to Neasden Tube Station, local shopping amenities, secondary and primary schools. Ideal First Time Buyer or buy to let investment. Viewing High Recommended.



Ground Floor  
Approximate Floor Area  
730.86 sq. ft  
(67.90 sq.m)

Approximate Gross Internal Area = 67.90 sq m / 730.86 sq ft  
Illustration for identification purposes only, measurements are approximate, not to scale.



12-14 High Road | Willesden | NW10 2QG

Sales | 020 8459 7777 Lettings | 020 8459 2600

sales@empire-estates.com lettings@empire-estates.com

[www.empire-estates.com](http://www.empire-estates.com)

In accordance with the Property Misdescriptions Act (1991) our particulars are a general guide to give a broad description of the property. They are not intended to constitute part of an offer or contract. We have not carried out structural survey and the services and the services, appliances and specific fittings have not been tested. All photographs, measurements, floor plans and distances referred to are given as a guide only and should not be relied upon for the purchase of carpets or any other fixtures or fittings. Lease details, service charges and ground rent (where applicable) are given as a guide only and should be checked and confirmed by your solicitor prior to exchange of contracts.