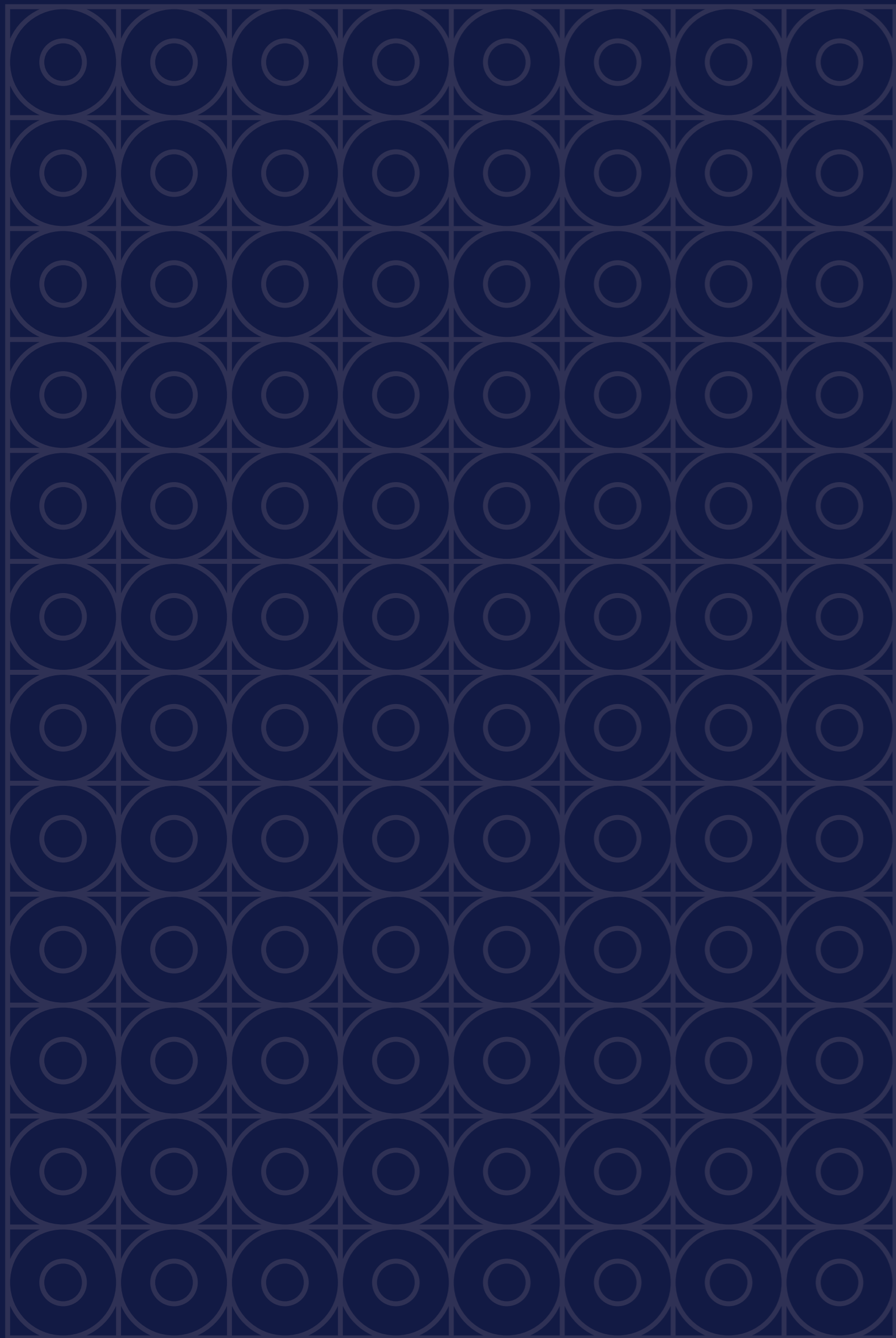




MADE IN WATFORD




Weston
Homes



A FRESH START

Welcome to The Laundry Works, an exciting new development of 1, 2 and 3 bedroom apartments and penthouses.

Created on the site of the old Watford Laundry Factory that laundered for London's 5-star hotels, The Old Bailey and Harrow School across its 105-year history, The Laundry Works features eight architecturally distinctive apartment buildings set within a wide tree-lined boulevard with attractive landscaped podium gardens throughout.

The Laundry Works will see the creation of a thriving new residential neighbourhood within an area noted for its green spaces and decidedly village-like feel. Enjoy the laid-back lifestyle but be close to the buzz of city life with excellent connections to central London and beyond.



A BRIGHTER WAY OF LIVING

Enjoy all this and more at
The Laundry Works:



Great location

- Just a 10-minute walk to Watford Underground station (Metropolitan line)
- A great choice of shops, dining out and leisure options, all within walking distance
- Enjoy a fun day out at one of Watford's many attractions



Local green spaces

- Meet your neighbours in the attractive landscaped podium gardens
- Relax in nearby Cassiobury Park, Watford's largest open space
- Enjoy peaceful walks at Whippendell Wood



Inspiring interiors

- Stylish and flexible living spaces
- Floor to ceiling windows fill apartments with natural light
- Choose from 28 bespoke kitchen choices
- Enjoy a premium specification as standard



Smart living

- Well-conceived interior features included throughout such as boiling water taps
- Integrated appliances included
- Parking available to many properties

Journey times are indicative only and sourced from tfl.gov.uk and Google Maps.

Computer Generated Image (CGI) is indicative only.



FALL IN LOVE WITH THE LAUNDRY WORKS

It's the combination of many stand-out features that makes living at The Laundry Works so special. From exclusive home benefits such as the exceptional specification, a great location surrounded by green space, to the peace of mind that comes with knowing your four-legged friend is welcome too.

Here are the Top Ten highlights:



HOME SWEET HOME. HOME COMFORTS.

1 EXTEND YOUR LIFE OUTSIDE
Almost every home features a private balcony or terrace.

2 ENJOY SUPERFAST BROADBAND
From the moment you move in.

3 PERFECTLY CONNECTED FOR WORK AND PLAY
Close to Watford Underground station or hire a car for adventure days.

4 WELCOMING FOR YOU AND YOUR BEST FRIEND
Dogs are welcome*.



5 ACRES OF COUNTRYSIDE ON YOUR DOORSTEP
Be spoilt for choice with parks and outdoor space.

6 MEET YOUR NEIGHBOURS
In the tranquil landscaped podium gardens.

7 A VILLAGE-LIKE VIBE
Enjoy the best of both: a laid-back lifestyle but near to the buzz of town.



8 PLENTY OF CYCLE STORAGE
Makes it easy to get about on two wheels.

9 CREATE YOUR DREAM HOME
Flexible, neutrally decorated living space to make your own with our wide range of inclusive choices.

10 JUST MOVE IN – IT'S ALL INCLUDED!
Full range of appliances and flooring provided throughout and state-of-the-art bathrooms.



*Subject to approval by the management company.



Computer Generated Image (CGI) is indicative only.

CLOSE TO THE ACTION



The Laundry Works is perfectly placed to enjoy a relaxed lifestyle; surrounded by glorious green spaces, but within walking distance to the centre of town and key transport connections.

Watford Underground station on the Metropolitan line is only a 10-minute walk away with trains calling at Baker Street and Euston. Watford Junction is also in the town centre with trains heading to Wembley Central in 22 minutes and London Euston in 24 minutes.

The magnificent Cassiobury Park is only a gentle 20-minute stroll away and you can even walk to the great shops and leisure opportunities at Atria Watford in half an hour (only 9 minutes by car).

LIVE THE WATFORD WAY

It's easy to see why Watford is consistently rated high on the list of the UK's happiest places to live with its vibrant mix of dining, entertainment, culture and green spaces. This is an area that provides all the ingredients for a rich and varied lifestyle.

Award-winning parks and golf clubs, a thriving town centre filled with shops, restaurants, cafés and nightclubs and plenty of cultural destinations to visit - there is no shortage of things to do. The top shopping destination, Atria Watford, is also nearby featuring over 140 shops, restaurants and leisure facilities all under one roof.



1



2



7

THE ACTION • THE VARIETY OF LIFE • HEART OF THE



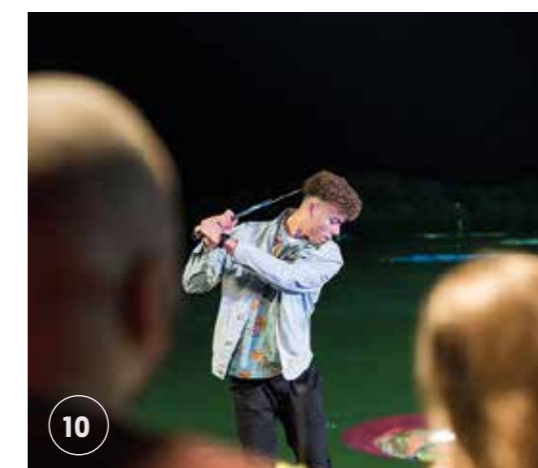
3



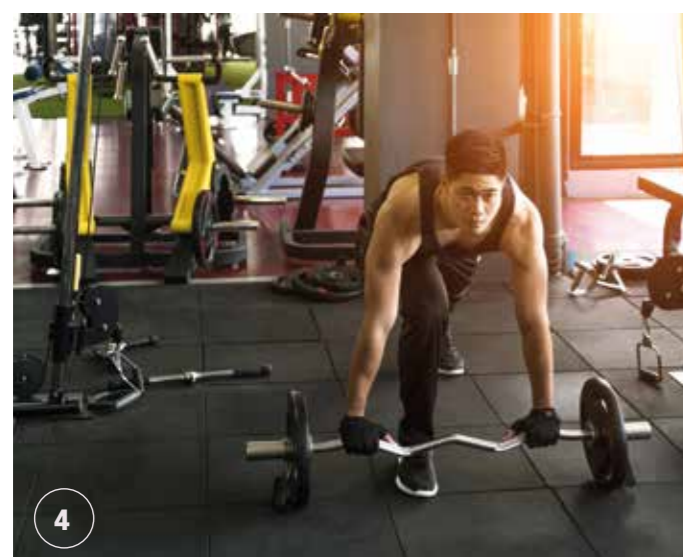
5



8



10



4



6



9



11



12

1. **Atria Watford**
watford-shopping.co.uk
2. **Whippendell Wood**
woodlandtrust.org.uk
3. **The Florist**
theflorist.uk.com
4. **Pump Gyms**
pumpgyms.com
5. **Watford Palace Theatre**
watfordpalacetheatre.co.uk
6. **Warner Bros. Studio Tour London**
wbstudiotour.co.uk
7. **Watford Market**
watfordmarket.co.uk
8. **The Big Screen Event**
watfordbigevents.co.uk
9. **Vicarage Road Stadium**
watfordfc.com
10. **Top Golf**
topgolf.com
11. **Rabbani's**
rabbanisindian.co.uk
12. **Tarboush**
tarboushwatford.co.uk

FOR A SENSE OF WELLBEING . ENJOY THE OUTDOORS .



CASSIOBURY PARK, WATFORD'S LARGEST OPEN SPACE, IS NEARBY. THIS AWARD-WINNING GREEN SPACE HAS BEEN VOTED ONE OF THE UK'S TOP TEN PARKS.

A BREATH OF FRESH AIR

Award-winning parks, ancient woodlands, lush golf courses and the waterside calm of the River Gade and Grand Union Canal, The Laundry Works is perfectly placed to enjoy all of this and more.

Cassiobury Park is only a short walk away, this expansive park (twice the size of London's Hyde Park) is a local favourite, a place to escape busy life for a relaxing walk or a leisurely picnic with friends. Highlights include great sporting facilities, from a croquet lawn to basketball courts, two cafés and a miniature railway.

For something a little different explore the 165 acres of historic woodland at Whippendell Wood, cherished locally for its natural beauty, rich mix of wildlife and glorious collection of bluebells, or head to the canal and while away a few hours watching the boats go by, or even try your hand at fishing.

The council's Big Events programme holds an impressive selection of free outdoor events throughout the year including fireworks at Cassiobury Park and an outdoor cinema experience, The Big Screen.



THE GRAND UNION CANAL, WHICH PASSES THROUGH WATFORD, IS THE LONGEST CANAL IN THE UK AT 137 MILES, AND RUNS FROM LONDON TO BIRMINGHAM.

MAKING CONNECTIONS



From Watford Junction by train		Harrow & Wealdstone 14 mins	Wembley Central 22 mins	London Euston 24 mins	Milton Keynes Central 43 mins	Birmingham New Street 1 hr 11 mins	Heathrow Airport 1 hr 24 mins
From Watford Underground Station		Chorleywood 15 mins	Harrow on the Hill 19 mins	Northwick Park 22 mins	Baker Street 41 mins	King's Cross 49 mins	Liverpool Street 57 mins
From The Laundry Works by foot		Watford Underground Station 10 mins	Morrisons Food Store 13 mins	Watford General Hospital 16 mins	Vicarage Road Stadium 16 mins	Cassiobury Park 22 mins	Watford Leisure Centre 24 mins
From The Laundry Works by car		Morrisons Food Store 6 mins	West Herts Golf Club 8 mins	Watford Museum 8 mins	Atria Watford 9 mins	Watford Palace Theatre 11 mins	Warner Bros. Studio Tour 15 mins
From The Laundry Works by bike		Morrisons Food Store 6 mins	Cassiobury Park 7 mins	Watford Palace Theatre 8 mins	Atria Watford 9 mins	Watford Junction Station 9 mins	Watford Market 10 mins



THE DIFFERENCE IS CLEAR CUT. THE PERFECT FINISH.

DRESSED TO IMPRESS

All homes at The Laundry Works are expertly designed to adapt to busy 21st century lives, with flexible interiors to accommodate work, rest and play. Whether that's extra play space for a young family or a desk area for home working - the possibilities are endless.

Living here is easy with the impressive array of integrated tech and time-saving features, which come as standard, from the instant boiling water tap in the kitchen to the digitally controlled smart taps in the bathrooms. The apartments are also Hyperoptic broadband enabled, a super-reliable service that is over 11 times faster than the UK's average broadband speed, so you can stream and download to your heart's content.*

Choice is a big part of the offer at The Laundry Works, with a range of finishes available for you to choose from so you can create the perfect look for your home. Select from an inspiring collection of handles, designer units and worktops for your kitchen, the perfect shade for your bathroom cabinetry, floor and wall tiles, and your strip flooring and carpet colours. The choice really is up to you.**



* Average speeds taken from Ofcom's 'UK Home Broadband Performance' measurement period May 2021.

** Choices are subject to build stage - please speak to a Sales Advisor for details.

THE FINISHING TOUCHES

The stylish homes at The Laundry Works all feature contemporary, open-plan living areas, superb bespoke designer kitchens and luxury bathrooms, all finished to the highest standards with modern living in mind.

Designed to offer ease of maintenance and running efficiency, these homes provide a fully comprehensive specification to enable you to start enjoying your new lifestyle from the moment you move in. With Hyperoptic superfast broadband to each home. The Laundry Works is perfectly placed to remain fully connected both inside and out. Choose from a wide range of options to personalise your home and make it truly your own.



DESIGNER KITCHENS:

- Wide choice of designer units and handles by Oakwood Kitchens*
- Choice of quartz stone worktops and upstands*
- Stainless steel splashback to hob
- Full range of integrated appliances from Zanussi:
 - Stainless steel electric fan oven
 - Fridge/freezer
 - Washer/dryer
 - Ceramic hob
 - Dishwasher
- Caple stainless steel chimney extractor
- Fascino stainless steel sink with oversized single bowl and integrated removable chopping board
- Fascino designer curved tap with clipped hose-spray extension
- Fascino instant boiling water and cold filtered water tap
- Integrated stainless steel soap dispenser
- LED lighting under kitchen wall units



LUXURY BATHROOMS & ENSUITES:

- Fascino digitally controlled smart tap
- Smart mirror with LED lighting, shaver socket, digital clock and de-mist pad
- Vanity units with integrated storage space in a choice of three finishes*
- Sleek, arctic white sinks, beautifully finished with a silky matt feel
- Arctic white shower trays and baths in matt finish with sleek stainless steel waste cover
- RAK Ceramics Hygiene+ WC with RAKRimless™ pan and soft-close ergonomic design seat
- Fascino smart shower and smart bath
- Heated chrome towel rails
- Choice of RAK Ceramics porcelain wall and floor tile colour with polished and matt finishes*
- Low-level LED strip lighting to bath



GENERAL FINISHES:

- Forest oak doors with polished chrome ironmongery matching door-linings, architraves and skirtings
- Choice of strip flooring to entrance hall, living area, dining area, kitchen and cloakrooms/cupboards*
- Choice of carpets with underlay to bedrooms*
- Fitted wardrobes to master bedroom
- Television and telephone points to living area and master bedroom
- USB double power sockets to kitchen and master bedroom
- Smoke alarm and CO² detectors
- Double-glazed windows and doors
- Audio/visual entry system to apartments accessed via communal entrance doors



CONNECTIVITY:

- Hyperoptic broadband enabled - subject to contract



HEATING:

- Electric panel heating throughout

* Choices from Weston Homes range and subject to stage of construction.

COMFORTS COVERED · TENDER LOVING CARE · HOME



Photographs are indicative only and show interior layouts from a similar development.



Computer Generated Image (CGI) is indicative only.

LIVE IN YOUR COMFORT ZONE

The stylish mix of 1, 2 and 3 bedroom apartments and penthouses are set within eight distinctive buildings of varying heights.

Nearly all apartments feature a private terrace or balcony and the landscaped podium gardens add to the sense of green space overall and access to the outdoors.

GIBBONS HOUSE

8 apartments

WYATT HOUSE

34 apartments

BRIDGEMAN HOUSE

8 apartments

REPTON HOUSE

77 apartments

COOKE HOUSE

11 apartments

MAY HOUSE

51 apartments

CAPELL HOUSE

14 apartments

VERRIO HOUSE

19 apartments



APARTMENT DIRECTORY



ONE BEDROOM

APARTMENT	TYPE	BUILDING	PAGE NO.
4	The Kensington	Gibbons House	30
7	The Kensington	Gibbons House	30
36	The Holywell	Wyatt House	31
43	The Holywell	Wyatt House	31
72	The Kensington	Bridgeman House	30
75	The Kensington	Bridgeman House	30
77	The Jellicoe	Repton House	32
78	The Silkmill	Repton House	33
82	The Waterman	Repton House	34
83	The Jellicoe	Repton House	32
89	The Waterman	Repton House	34
90	The Jellicoe	Repton House	32
96	The Waterman	Repton House	34
97	The Jellicoe	Repton House	32
103	The Waterman	Repton House	34
104	The Jellicoe	Repton House	32
110	The Waterman	Repton House	34
111	The Jellicoe	Repton House	32
117	The Waterman	Repton House	34
118	The Jellicoe	Repton House	32
124	The Waterman	Repton House	34
129	The Waterman	Repton House	34
134	The Waterman	Repton House	34
139	The Waterman	Repton House	34
144	The Waterman	Repton House	34
149	The Waterman	Repton House	34
157	The Kensington	Cooke House	30
160	The Kensington	Cooke House	30
163	The Kensington	Cooke House	30
169	The Beechcroft	May House	35
170	The Beechcroft	May House	35
175	The Beechcroft	May House	35
180	The Beechcroft	May House	35
185	The Beechcroft	May House	35
190	The Beechcroft	May House	35
195	The Beechcroft	May House	35
200	The Beechcroft	May House	35
204	The Beechcroft	May House	35
208	The Beechcroft	May House	35
212	The Beechcroft	May House	35
220	The Oxford	Capell House	36
224	The Oxford	Capell House	36
227	The Oxford	Capell House	36
232	The Copthorne	Verrio House	37
235	The Copthorne	Verrio House	37
238	The Copthorne	Verrio House	37
241	The Copthorne	Verrio House	37
244	The Copthorne	Verrio House	37
247	The Copthorne	Verrio House	37

TWO BEDROOM

APARTMENT	TYPE	BUILDING	PAGE NO.
1	The Whippendell	Gibbons House	38
2	The Belgrave	Gibbons House	39
3	The Chester	Gibbons House	40
6	The Chester	Gibbons House	40
39	The Clifton	Wyatt House	41
40	The Pioneer	Wyatt House	42
41	The Healey	Wyatt House	43
46	The Clifton	Wyatt House	41
48	The Healey	Wyatt House	43
47	The Pioneer	Wyatt House	42
51	The Clifton	Wyatt House	41
52	The Pioneer	Wyatt House	42
55	The Clifton	Wyatt House	41
56	The Pioneer	Wyatt House	42
59	The Clifton	Wyatt House	41
60	The Pioneer	Wyatt House	42
63	The Clifton	Wyatt House	41
64	The Pioneer	Wyatt House	42
67	The Clifton	Wyatt House	41
68	The Pioneer	Wyatt House	42
69	The Whippendell	Bridgeman House	38
70	The Belgrave	Bridgeman House	39
71	The Chester	Bridgeman House	40
74	The Chester	Bridgeman House	40
79	The Sycamore	Repton House	46
80	The Raven	Repton House	47
81	The Caxton	Repton House	49
84	The Croxley	Repton House	44
85	The Woodshots	Repton House	45
86	The Sycamore	Repton House	46
87	The Raven	Repton House	47
88	The Frankland	Repton House	50
91	The Croxley	Repton House	44
92	The Woodshots	Repton House	45
93	The Sycamore	Repton House	46
94	The Raven	Repton House	47
95	The Hatters	Repton House	48
98	The Croxley	Repton House	44
99	The Woodshots	Repton House	45
100	The Sycamore	Repton House	46
101	The Raven	Repton House	47
102	The Hatters	Repton House	48
105	The Croxley	Repton House	44
106	The Woodshots	Repton House	45
107	The Sycamore	Repton House	46
108	The Raven	Repton House	47
109	The Frankland	Repton House	50
112	The Croxley	Repton House	44
113	The Woodshots	Repton House	45
114	The Sycamore	Repton House	46
115	The Raven	Repton House	47
116	The Frankland	Repton House	50
119	The Croxley	Repton House	44
120	The Woodshots	Repton House	45
121	The Sycamore	Repton House	46
122	The Raven	Repton House	47
123	The Hatters	Repton House	48
125	The Hazelwood	Repton House	51

TWO BEDROOM

APARTMENT	TYPE	BUILDING	PAGE NO.
126	The Sycamore	Repton House	46
127	The Raven	Repton House	47
128	The Hatters	Repton House	48
130	The Cherry	Repton House	52
131	The Sycamore	Repton House	46
132	The Raven	Repton House	47
133	The Frankland	Repton House	50
135	The Cherry	Repton House	52
136	The Sycamore	Repton House	46
137	The Raven	Repton House	47
138	The Frankland	Repton House	50
140	The Cherry	Repton House	52
141	The Sycamore	Repton House	46
142	The Raven	Repton House	47
143	The Hatters	Repton House	48
145	The Cherry	Repton House	52
146	The Sycamore	Repton House	46
147	The Raven	Repton House	47
148	The Hatters	Repton House	48
150	The Cherry	Repton House	52
151	The Sycamore	Repton House	46
152	The Raven	Repton House	47
153	The Hatters	Repton House	48
154	The Whippendell	Cooke House	38
155	The Belgrave	Cooke House	39
156	The Springfield	Cooke House	53
158	The Springfield	Cooke House	53
159	The Springfield	Cooke House	53
161	The Springfield	Cooke House	53
162	The Springfield	Cooke House	53
164	The Springfield	Cooke House	53
166	The Oakleigh	May House	54
167	The Warwick	May House	56
168	The Linden	May House	61
172	The Mayfare	May House	55
173	The Claremont	May House	57
174	The Elmcote	May House	60
177	The Mayfare	May House	55
178	The Claremont	May House	57
179	The Elmcote	May House	60
182	The Mayfare	May House	55
183	The Claremont	May House	57
184	The Elmcote	May House	60
187	The Mayfare	May House	55
188	The Claremont	May House	57
189	The Elmcote	May House	60
192	The Mayfare	May House	55
193	The Claremont	May House	57
194	The Elmcote	May House	60
197	The Mayfare	May House	55
198	The Claremont	May House	57
199	The Elmcote	May House	60
201	The Mayfare	May House	55
202	The Claremont	May House	57
203	The Elmcote	May House	60
205	The Mayfare	May House	55
206	The Claremont	May House	57
207	The Elmcote	May House	60
209	The Mayfare	May House	55

TWO BEDROOM

APARTMENT	TYPE	BUILDING	PAGE NO.
210	The Claremont	May House	57
211	The Elmcote	May House	60
213	The Mayfare	May House	55
214	The Claremont	May House	57
215	The Elmcote	May House	60
216	The Cassio	Capell House	58
217	The Oaklands	Capell House	59
218	The Fullerian	Capell House	62
219	The Fearnley	Capell House	64
221	The Marlborough	Capell House	65
222	The Durban	Capell House	63
223	The Fearnley	Capell House	64
225	The Marlborough	Capell House	65
226	The Durban	Capell House	63
228	The Marlborough	Capell House	65
229	The Durban	Capell House	63
230	The Hillcroft	Verrio House	66
231	The Vivian	Verrio House	67
233	The Lavrock	Verrio House	68
234	The Vivian	Verrio House	67
236	The Lavrock	Verrio House	68
237	The Vivian	Verrio House	67
239	The Lavrock	Verrio House	68
240	The Vivian	Verrio House	67
242	The Lavrock	Verrio House	68
243	The Vivian	Verrio House	67
245	The Lavrock	Verrio House	68
246	The Vivian	Verrio House	67
248	The Lavrock	Verrio House	68

THREE BEDROOM

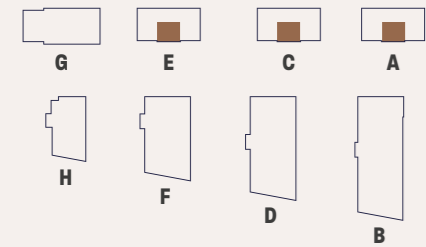
APARTMENT	TYPE	BUILDING	PAGE NO.
5	The Rembrandt	Gibbons House	69
8	The Rembrandt	Gibbons House	69
35	The Harwoods	Wyatt House	70
37	The Kelmscott	Wyatt House	71
38	The Rose	Wyatt House	72
42	The Harwoods	Wyatt House	70
44	The Kelmscott	Wyatt House	71
45	The Rose	Wyatt House	72
49	The Kelmscott	Wyatt House	71
50	The Rose	Wyatt House	72
53	The Kelmscott	Wyatt House	71
54	The Rose	Wyatt House	72
57	The Kelmscott	Wyatt House	71
58	The Rose	Wyatt House	72
61	The Kelmscott	Wyatt House	71
62	The Rose	Wyatt House	72
65	The Kelmscott	Wyatt House	71
66	The Rose	Wyatt House	72
73	The Rembrandt	Bridgeman House	69
76	The Rembrandt	Bridgeman House	69
165	The Malkin	May House	73
171	The Malkin	May House	73
176	The Malkin	May House	73
181	The Malkin	May House	73
186	The Malkin	May House	73
191	The Malkin	May House	73
196	The Malkin	May House	73

THE KENSINGTON

GIBBONS HOUSE, BRIDGEMAN HOUSE, COOKE HOUSE

1 Bedroom

4, 7, 72, 75, 157, 160, 163



Dimensions

Kitchen/Living/Dining	6.40m x 4.84m	21'0" x 15'11"
Bedroom	4.29m x 3.02m	14'11" x 9'11"
Total Area	51.7 sq m	556 sq ft
Balcony	3.34m x 1.40m	10'11" x 4'7"

Key

C Cupboard
W Wardrobe

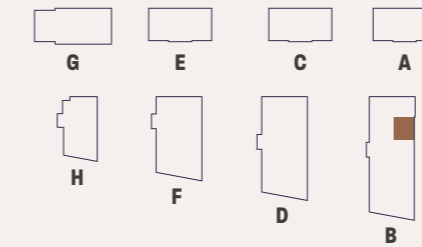
Maximum dimensions are shown. They are intended as a guide only and are subject to change. Not all plans are to scale. Please speak to our sales executive for further information.

THE HOLYWELL

WYATT HOUSE

1 Bedroom

36, 43



Dimensions

Kitchen/Living/Dining	6.62m x 4.42m	21'9" x 14'6"
Bedroom	4.51m x 3.03m	14'10" x 9'11"
Total Area	50.6 sq m	544 sq ft
Balcony	2.92m x 1.73m	9'7" x 5'8"

Key

C Cupboard
W Wardrobe

Maximum dimensions are shown. They are intended as a guide only and are subject to change. Not all plans are to scale. Please speak to our sales executive for further information.

Floor Locator

Level	Apartments
12	
11	
10	
9	
8	
7	
6	
5	
4	
3	163 (E)
2	7 (A), 75 (C), 160 (E)
1	4 (A), 72 (C), 157 (E)
G	
LG	

Floor Locator

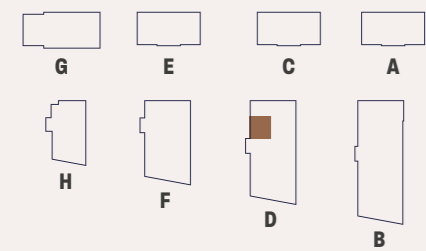
Level	Apartments
12	
11	
10	
9	
8	
7	
6	
5	43
4	36
3	
2	
1	
G	
LG	

THE JELICOE

REPTON HOUSE

1 Bedroom

77, 83, 90, 97, 104, 111, 118



Dimensions

Kitchen/Living/Dining	6.79m x 4.72m	27'2" x 15'6"
Bedroom	4.71m x 2.98m	15'6" x 9'9"
Total Area	53.7 sq m	578 sq ft
Balcony	3.41m x 1.73m	11'2" x 5'8"

Key

C Cupboard
W Wardrobe

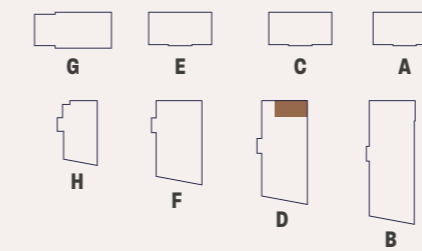
Maximum dimensions are shown. They are intended as a guide only and are subject to change. Not all plans are to scale. Please speak to our sales executive for further information.

THE SILKMILL

REPTON HOUSE

1 Bedroom

78



Dimensions

Kitchen/Living/Dining	6.30m x 4.81m	20'8" x 15'9"
Bedroom	4.32m x 2.70m	14'2" x 8'10"
Total Area	52.2 sq m	562 sq ft
Terrace	3.90m x 1.57m	12'9" x 5'1"

Key

C Cupboard
W Wardrobe

Maximum dimensions are shown. They are intended as a guide only and are subject to change. Not all plans are to scale. Please speak to our sales executive for further information.

Floor Locator

Level	Apartments
12	
11	
10	
9	
8	
7	
6	118
5	111
4	104
3	97
2	90
1	83
G	77
LG	

Floor Locator

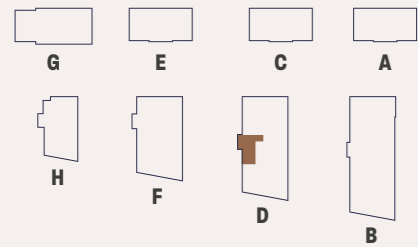
Level	Apartments
12	
11	
10	
9	
8	
7	
6	
5	
4	
3	
2	
1	
G	78
LG	

THE WATERMAN

REPTON HOUSE

1 Bedroom

82, 89, 96, 103, 110, 117, 124,
129, 134, 139, 144, 149



Dimensions

Kitchen/Living/Dining	5.79m x 4.37m	19'0" x 14'4"
Bedroom	5.28m x 4.11m	17'4" x 13'6"
Total Area	53.3 sq m	574 sq ft
Balcony	3.59m x 1.73m	11'9" x 5'8"

Key

C Cupboard
W Wardrobe

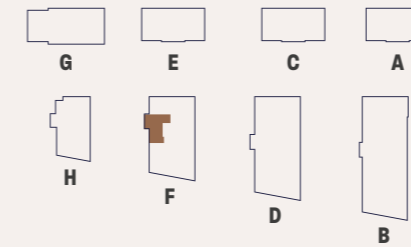
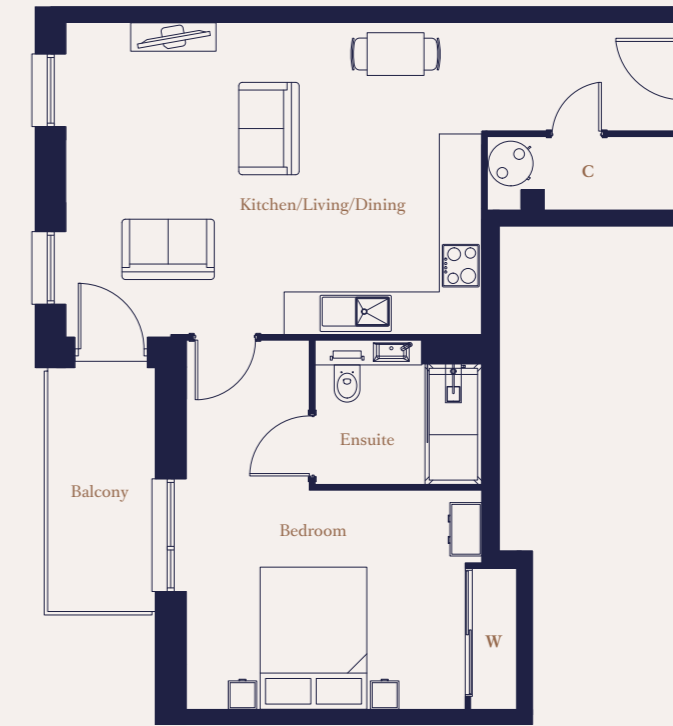
Maximum dimensions are shown. They are intended as a guide only and are subject to change. Not all plans are to scale. Please speak to our sales executive for further information.

THE BEEHCROFT

MAY HOUSE

1 Bedroom

169, 170, 175, 180, 185, 190,
195, 200, 204, 208, 212



Dimensions

Kitchen/Living/Dining	5.81m x 4.36m	19'1" x 14'4"
Bedroom	5.16m x 4.59m	16'11" x 15'1"
Total Area	55.8 sq m	601 sq ft
Balcony	3.41m x 1.73m	11'2" x 5'8"

Key

C Cupboard
W Wardrobe

Maximum dimensions are shown. They are intended as a guide only and are subject to change. Not all plans are to scale. Please speak to our sales executive for further information.

Floor Locator

Level	Apartments
12	149
11	144
10	139
9	134
8	129
7	124
6	117
5	110
4	103
3	96
2	89
1	82
G	
LG	

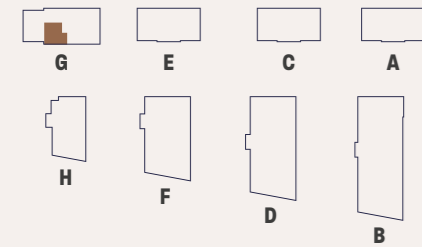
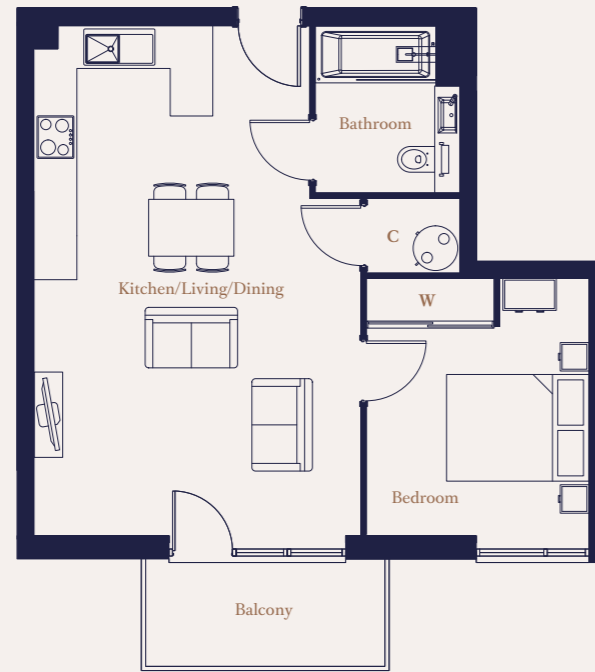
Floor Locator

Level	Apartments
12	
11	
10	212
9	208
8	204
7	200
6	195
5	190
4	185
3	180
2	175
1	170
G	169
LG	

THE OXFORD

CAPELL HOUSE

1 Bedroom
220, 224, 227



Dimensions

Kitchen/Living/Dining	7.14m x 4.58m	23'5" x 15'0"
Bedroom	3.59m x 3.11m	11'10" x 10'2"
Total Area	50.0 sq m	538 sq ft
Balcony	3.34m x 1.40m	10'11" x 4'7"

Key

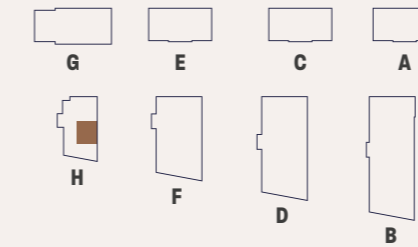
C Cupboard
W Wardrobe

Maximum dimensions are shown. They are intended as a guide only and are subject to change. Not all plans are to scale. Please speak to our sales executive for further information.

THE COPTHORNE

VERRIO HOUSE

1 Bedroom
232, 235, 238, 241, 244, 247



Dimensions

Kitchen/Living/Dining	6.59m x 4.52m	21'8" x 14'10"
Bedroom	4.47m x 2.98m	14'8" x 9'10"
Total Area	50.7 sq m	546 sq ft
Balcony	2.92m x 1.73m	9'7" x 5'8"

Key

C Cupboard
W Wardrobe

Maximum dimensions are shown. They are intended as a guide only and are subject to change. Not all plans are to scale. Please speak to our sales executive for further information.

Floor Locator

Level	Apartments
12	
11	
10	
9	
8	
7	
6	
5	
4	
3	227
2	224
1	220
G	
LG	

Floor Locator

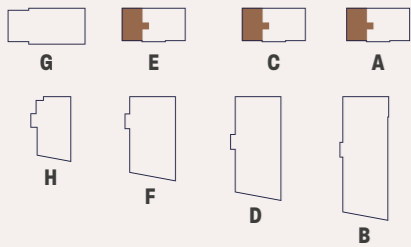
Level	Apartments
12	
11	
10	
9	
8	
7	
6	
5	247
4	244
3	241
2	238
1	235
G	232
LG	

THE WHIPPENDELL

GIBBONS HOUSE, BRIDGEMAN HOUSE, COOKE HOUSE

2 Bedroom

1, 69, 154



Dimensions

Kitchen/Living/Dining	6.49m x 4.70m	21'4" x 15'5"
Principal Bedroom	4.00m x 3.24m	13'1" x 10'8"
Bedroom 2	4.05m x 2.79m	13'3" x 9'2"
Total Area	76.7 sq m	825 sq ft
Front Terrace	6.86m x 2.48m	22'6" x 8'1"
Rear Terrace	6.75m x 2.25m	22'1" x 7'4"

Key

- C Cupboard
- W Wardrobe

Floor Locator

Level	Apartments
12	
11	
10	
9	
8	
7	
6	
5	
4	
3	
2	
1	
G	1 (A), 69 (C), 154 (E)
LG	

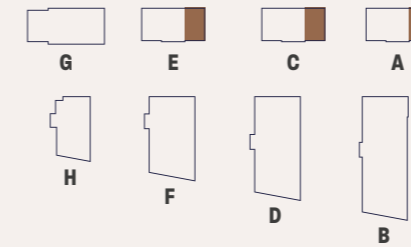
Maximum dimensions are shown. They are intended as a guide only and are subject to change. Not all plans are to scale. Please speak to our sales executive for further information.

THE BELGRAVE

GIBBONS HOUSE, BRIDGEMAN HOUSE, COOKE HOUSE

2 Bedroom

2, 70, 155



Dimensions

Kitchen/Living/Dining	6.49m x 5.25m	21'4" x 17'3"
Principal Bedroom	4.06m x 3.12m	13'4" x 10'3"
Bedroom 2	3.40m x 3.15m	11'2" x 10'4"
Total Area	72.1 sq m	776 sq ft
Front Terrace	6.86m x 2.48m	22'6" x 8'1"
Rear Terrace	6.75m x 2.25m	22'1" x 7'4"

Key

- C Cupboard
- W Wardrobe

Floor Locator

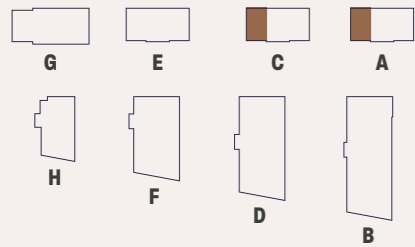
Level	Apartments
12	
11	
10	
9	
8	
7	
6	
5	
4	
3	
2	
1	
G	2 (A), 70 (C), 155 (E)
LG	

Maximum dimensions are shown. They are intended as a guide only and are subject to change. Not all plans are to scale. Please speak to our sales executive for further information.

THE CHESTER

GIBBONS HOUSE, BRIDGEMAN HOUSE

2 Bedroom
3, 6, 71, 74



Dimensions

Kitchen/Living/Dining	6.49m x 3.75m	21'4" x 12'4"
Principal Bedroom	4.62m x 3.40m	15'2" x 11'2"
Bedroom 2	3.35m x 3.01m	11'0" x 9'11"
Total Area	71.8 sq m	773 sq ft
Balcony	3.34m x 1.40m	10'11" x 4'7"

Key

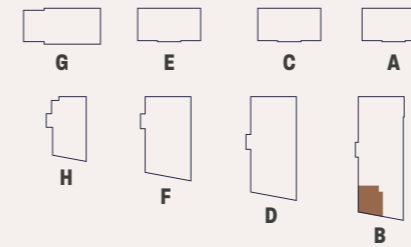
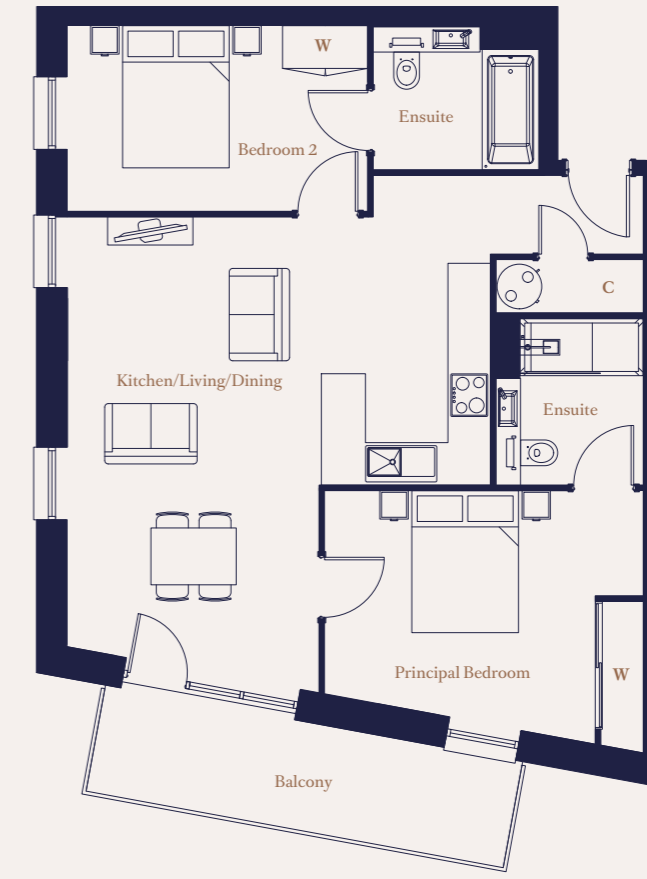
C Cupboard
W Wardrobe

Maximum dimensions are shown. They are intended as a guide only and are subject to change. Not all plans are to scale. Please speak to our sales executive for further information.

THE CLIFTON

WYATT HOUSE

2 Bedroom
39, 46, 51, 55, 59, 63, 67



Dimensions

Kitchen/Living/Dining	6.02m x 5.92m	19'9" x 19'5"
Principal Bedroom	4.48m x 3.65m	14'9" x 12'0"
Bedroom 2	4.19m x 2.61m	13'9" x 8'7"
Total Area	74.2 sq m	799 sq ft
Balcony	5.96m x 1.73m	19'6" x 5'8"

Key

C Cupboard
W Wardrobe

Maximum dimensions are shown. They are intended as a guide only and are subject to change. Not all plans are to scale. Please speak to our sales executive for further information.

Floor Locator

Level	Apartments
12	
11	
10	
9	
8	
7	
6	
5	
4	
3	
2	6 (A), 74 (C)
1	3 (A), 71 (C)
G	
LG	

Floor Locator

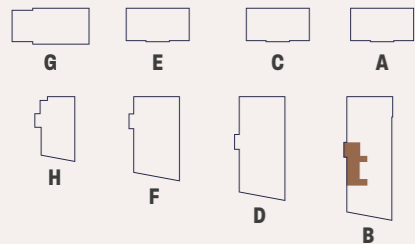
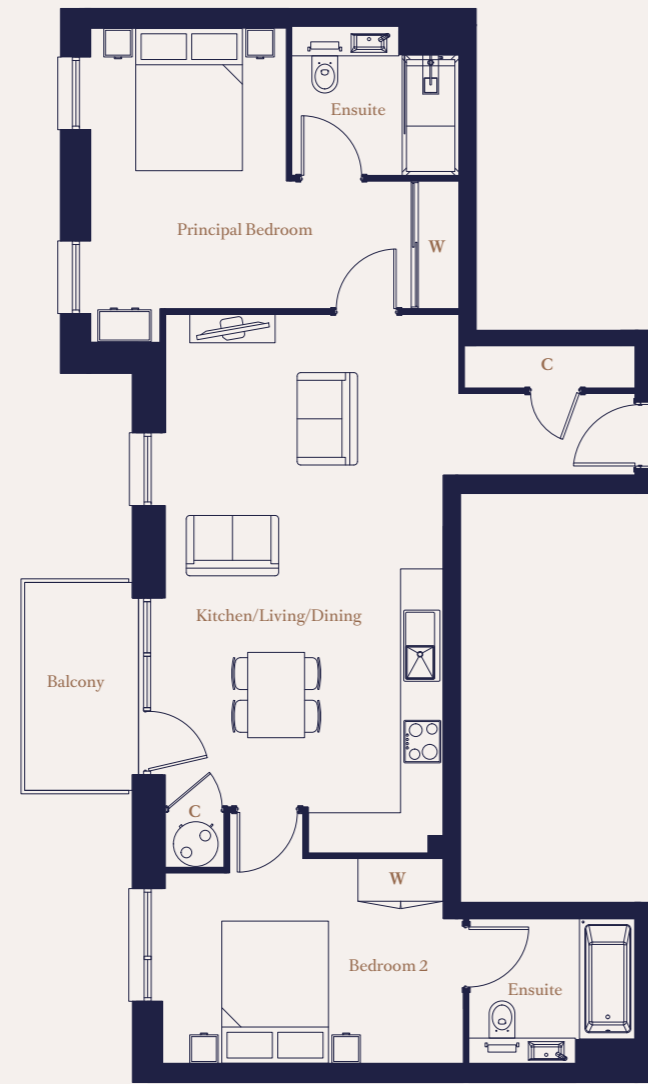
Level	Apartments
12	
11	
10	67
9	63
8	59
7	55
6	51
5	46
4	39
3	
2	
1	
G	
LG	

THE PIONEER

WYATT HOUSE

2 Bedroom

40, 47, 52, 56, 60, 64, 68



Dimensions

Kitchen/Living/Dining	6.93m x 3.90m	22'9" x 12'10"
Principal Bedroom	3.91m x 2.71m	12'10" x 8'11"
Bedroom 2	4.19m x 3.53m	13'9" x 11'7"
Total Area	73.8 sq m	794 sq ft
Balcony	2.92m x 1.73m	9'7" x 5'8"

Key

C Cupboard
W Wardrobe

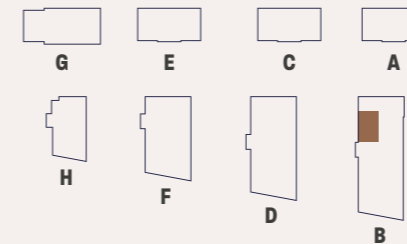
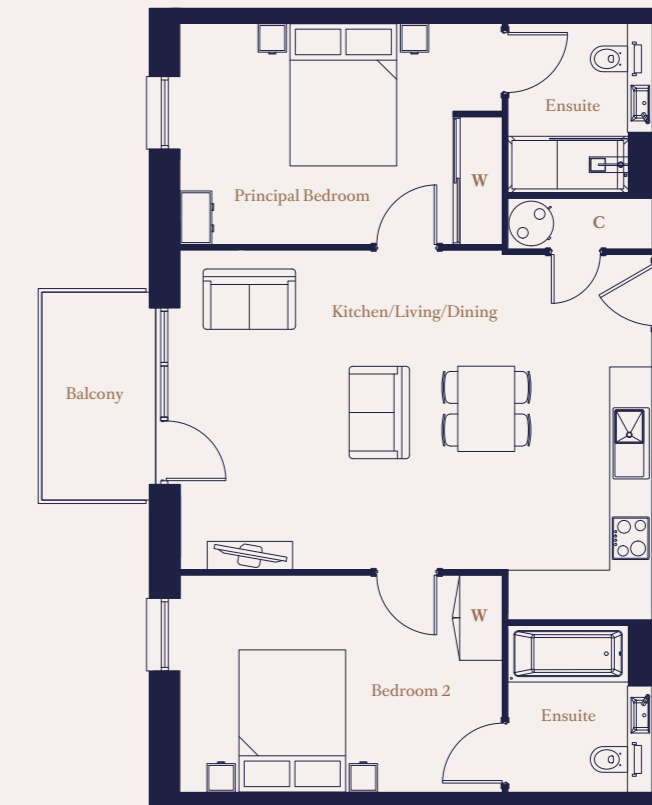
Maximum dimensions are shown. They are intended as a guide only and are subject to change. Not all plans are to scale. Please speak to our sales executive for further information.

THE HEALEY

WYATT HOUSE

2 Bedroom

41, 48



Dimensions

Kitchen/Living/Dining	6.60m x 4.49m	21'8" x 14'9"
Principal Bedroom	4.49m x 3.07m	14'9" x 10'1"
Bedroom 2	4.49m x 3.05m	14'9" x 10'0"
Total Area	72.1 sq m	776 sq ft
Balcony	2.92m x 1.73m	9'7" x 5'8"

Key

C Cupboard
W Wardrobe

Maximum dimensions are shown. They are intended as a guide only and are subject to change. Not all plans are to scale. Please speak to our sales executive for further information.

Floor Locator

Level	Apartments
12	
11	
10	68
9	64
8	60
7	56
6	52
5	47
4	40
3	
2	
1	
LG	

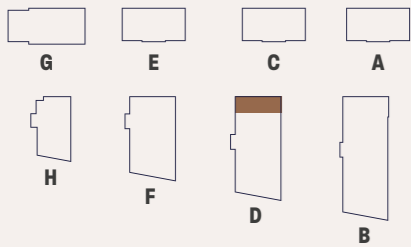
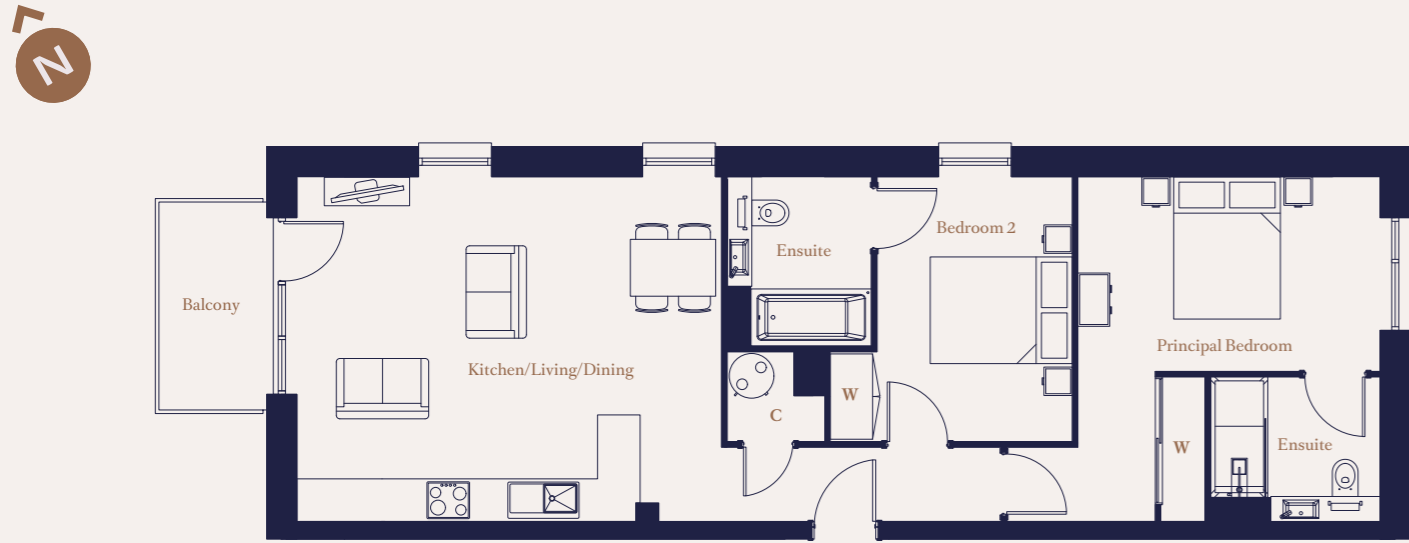
Floor Locator

Level	Apartments
12	
11	
10	
9	
8	
7	
6	
5	48
4	41
3	
2	
1	
LG	

THE CROXLEY

REPTON HOUSE

2 Bedroom
84, 91, 98, 105, 112, 119



Dimensions

Kitchen/Living/Dining	5.93m x 4.80m	19'6" x 15'9"
Principal Bedroom	4.21m x 2.70m	13'10" x 8'10"
Bedroom 2	3.69m x 3.41m	12'1" x 11'2"
Total Area	74.3 sq m	800 sq ft
Balcony	2.92m x 1.73m	9'7" x 5'8"

Key

C Cupboard
W Wardrobe

Maximum dimensions are shown. They are intended as a guide only and are subject to change. Not all plans are to scale. Please speak to our sales executive for further information.

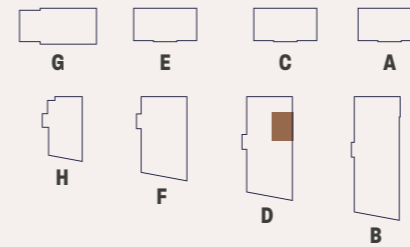
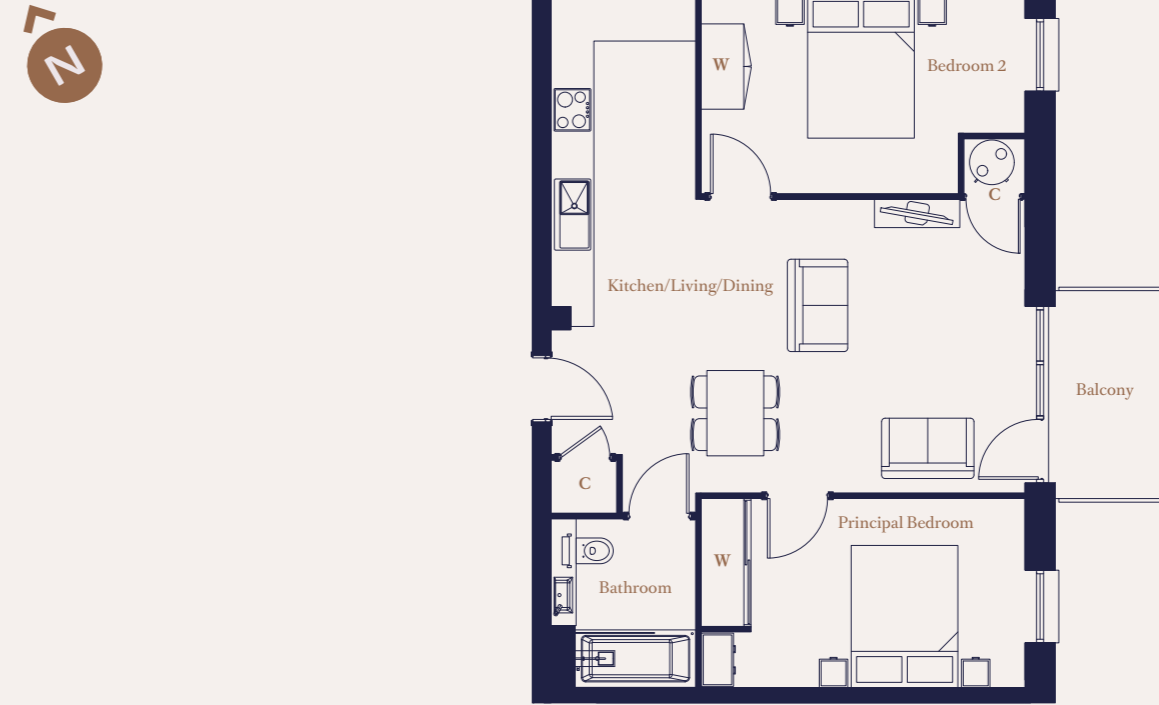
Floor Locator

Level	Apartments
12	
11	
10	
9	
8	
7	
6	119
5	112
4	105
3	98
2	91
1	84
G	
LG	

THE WOODSHOTS

REPTON HOUSE

2 Bedroom
85, 92, 99, 106, 113, 120



Dimensions

Kitchen/Living/Dining	6.96m x 6.63m	22'10" x 21'9"
Principal Bedroom	4.51m x 2.62m	14'10" x 8'7"
Bedroom 2	4.52m x 2.75m	14'10" x 9'1"
Total Area	65.0 sq m	700 sq ft
Balcony	2.92m x 1.73m	9'7" x 5'8"

Key

C Cupboard
W Wardrobe

Maximum dimensions are shown. They are intended as a guide only and are subject to change. Not all plans are to scale. Please speak to our sales executive for further information.

Floor Locator

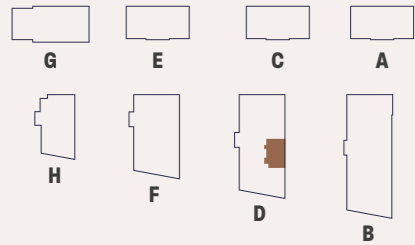
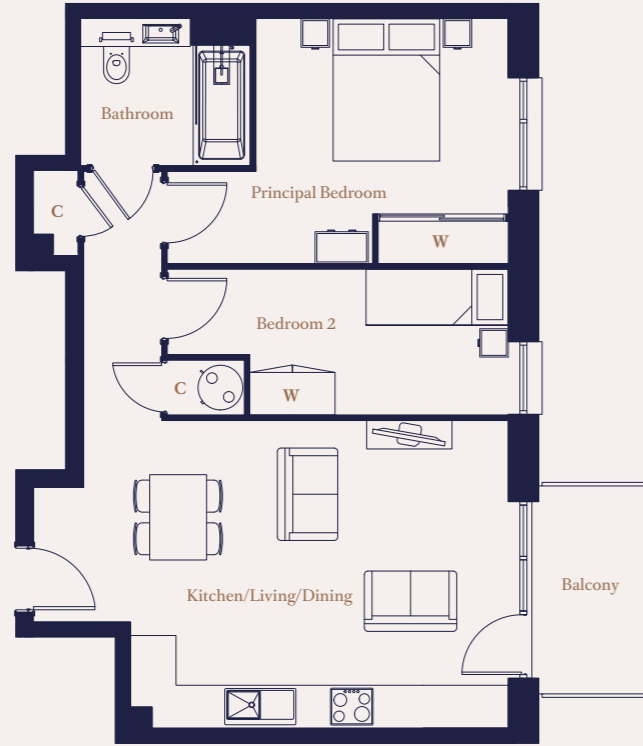
Level	Apartments
12	
11	
10	
9	
8	
7	
6	120
5	113
4	106
3	99
2	92
1	85
G	
LG	

THE SYCAMORE

REPTON HOUSE

2 Bedroom

79, 86, 93, 100, 107, 114, 121,
126, 131, 136, 141, 146, 151



Dimensions

Kitchen/Living/Dining	6.64m x 4.29m	21'9" x 14'1"
Principal Bedroom	4.76m x 3.41m	15'8" x 11'2"
Bedroom 2	4.76m x 2.05m	15'8" x 6'9"
Total Area	60.9 sq m	655 sq ft
Balcony	2.92m x 1.73m	9'7" x 5'8"

Key

C Cupboard
W Wardrobe

Floor Locator

Level	Apartments
12	151
11	146
10	141
9	136
8	131
7	126
6	121
5	114
4	107
3	100
2	93
1	86
G	79
LG	

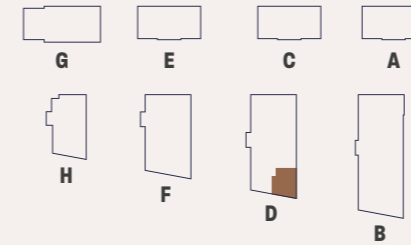
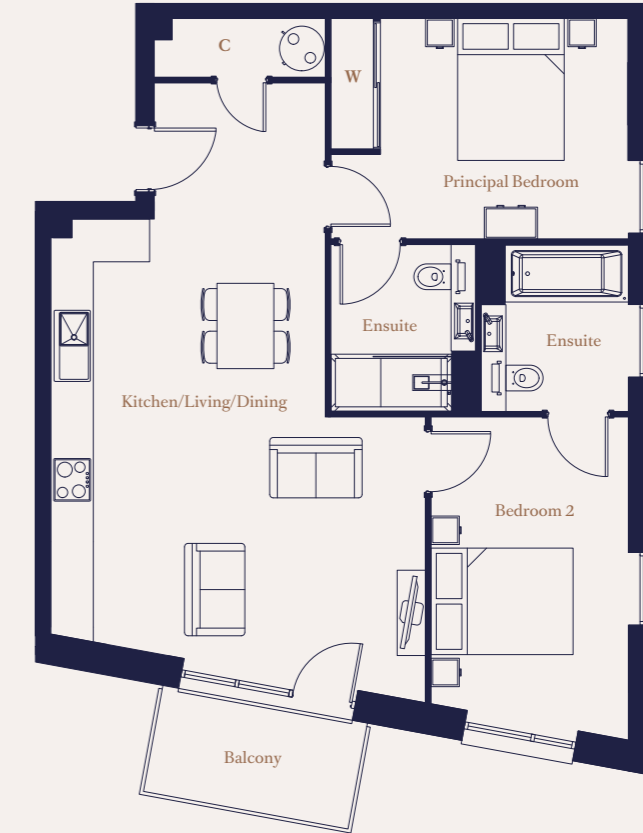
Maximum dimensions are shown. They are intended as a guide only and are subject to change.
Not all plans are to scale. Please speak to our sales executive for further information.

THE RAVEN

REPTON HOUSE

2 Bedroom

80, 87, 94, 101, 108, 115, 122,
127, 132, 137, 142, 147, 152



Dimensions

Kitchen/Living/Dining	8.67m x 5.24m	28'6" x 17'2"
Principal Bedroom	4.14m x 3.07m	13'7" x 10'1"
Bedroom 2	4.49m x 2.73m	14'9" x 9'0"
Total Area	72.6 sq m	781 sq ft
Balcony	2.92m x 1.73m	9'7" x 5'8"

Key

C Cupboard
W Wardrobe

Floor Locator

Level	Apartments
12	152
11	147
10	142
9	137
8	132
7	127
6	122
5	115
4	108
3	101
2	94
1	87
G	80
LG	

Maximum dimensions are shown. They are intended as a guide only and are subject to change.
Not all plans are to scale. Please speak to our sales executive for further information.

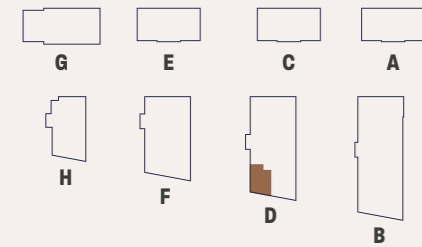
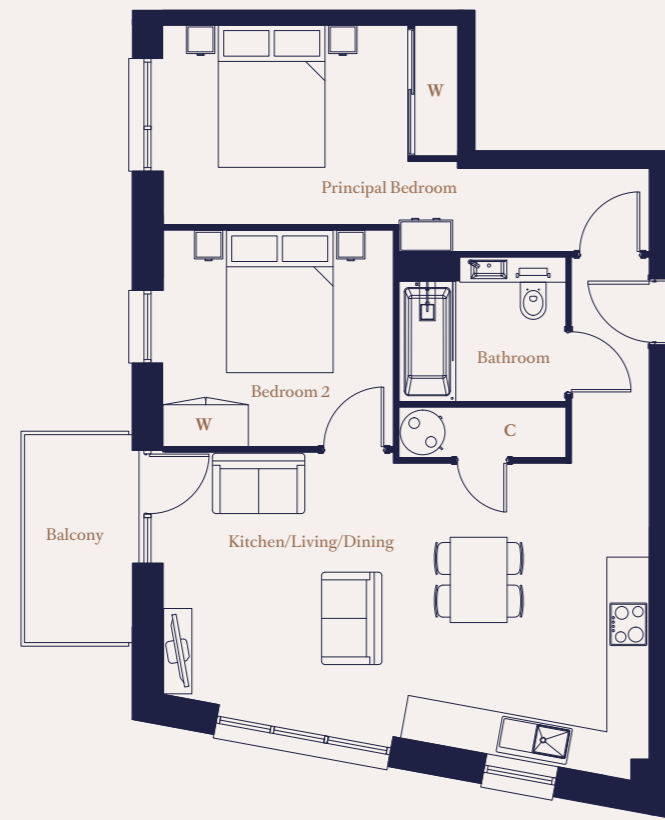


THE HATTERS

REPTON HOUSE

2 Bedroom

95, 102, 123, 128, 143, 148, 153



Dimensions

Kitchen/Living/Dining	6.79m x 4.42m	22'4" x 14'6"
Principal Bedroom	6.81m x 2.77m	22'4" x 9'1"
Bedroom 2	3.22m x 3.15m	10'7" x 10'4"
Total Area	63.9 sq m	688 sq ft
Balcony	2.92m x 1.73m	9'7" x 5'8"

Key

C Cupboard
W Wardrobe

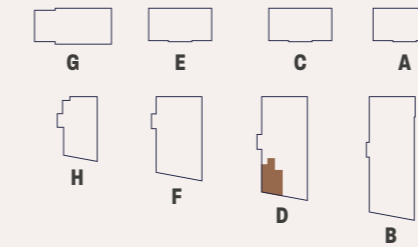
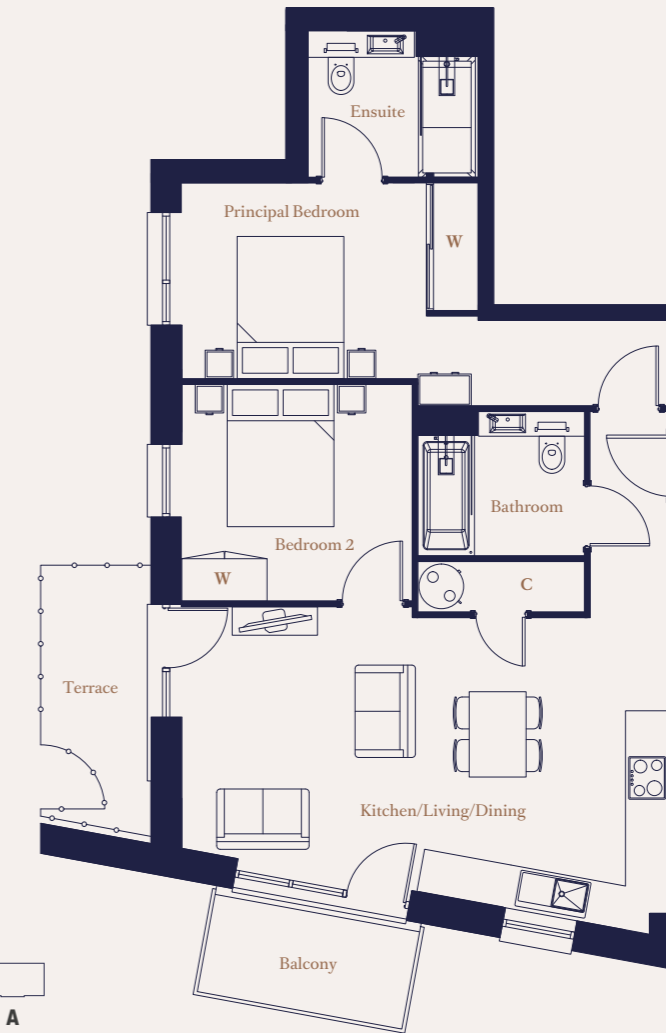
Maximum dimensions are shown. They are intended as a guide only and are subject to change. Not all plans are to scale. Please speak to our sales executive for further information.

THE CAXTON

REPTON HOUSE

2 Bedroom

81



Dimensions

Kitchen/Living/Dining	6.81m x 4.42m	22'4" x 14'6"
Principal Bedroom	6.81m x 2.75m	22'4" x 9'1"
Bedroom 2	3.21m x 3.05m	10'6" x 10'0"
Total Area	69.0 sq m	742 sq ft
Terrace	3.50m x 1.50m	12'9" x 4'11"
Balcony	2.92m x 1.73m	9'7" x 5'8"

Key

C Cupboard
W Wardrobe

Maximum dimensions are shown. They are intended as a guide only and are subject to change. Not all plans are to scale. Please speak to our sales executive for further information.

Floor Locator

Level	Apartments
12	153
11	148
10	143
9	
8	
7	128
6	123
5	
4	
3	102
2	95
1	
G	
LG	

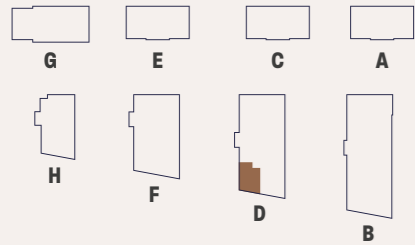
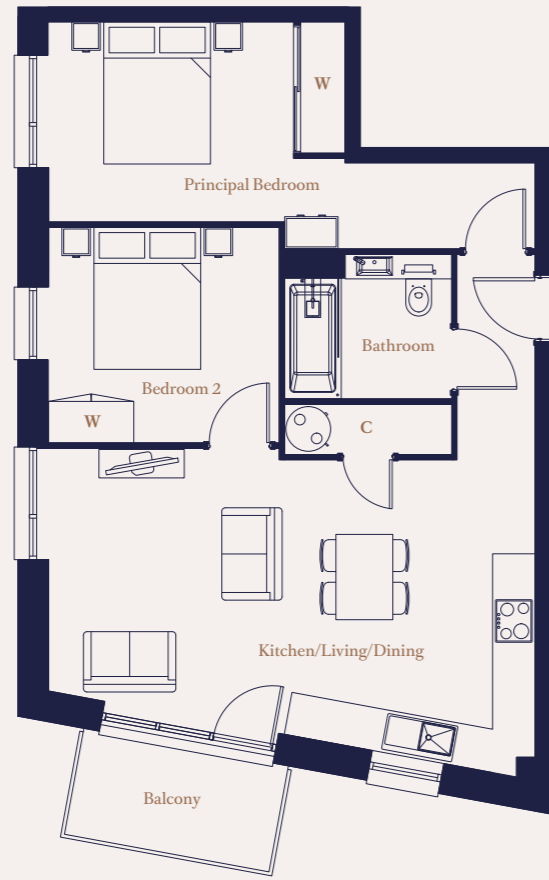
Floor Locator

Level	Apartments
12	
11	
10	
9	
8	
7	
6	
5	
4	
3	
2	
1	
G	81
LG	

THE FRANKLAND

REPTON HOUSE

2 Bedroom
88, 109, 116, 133, 138



Dimensions

Kitchen/Living/Dining	6.79m x 4.42m	22'4" x 14'6"
Principal Bedroom	6.81m x 2.77m	22'4" x 9'1"
Bedroom 2	3.22m x 3.04m	10'7" x 10'0"
Total Area	63.8 sq m	687 sq ft
Balcony	2.92m x 1.73m	9'7" x 5'8"

Key

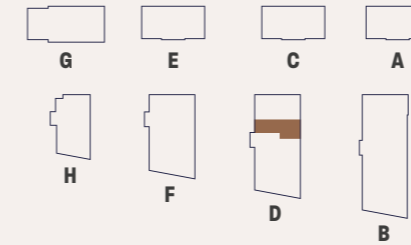
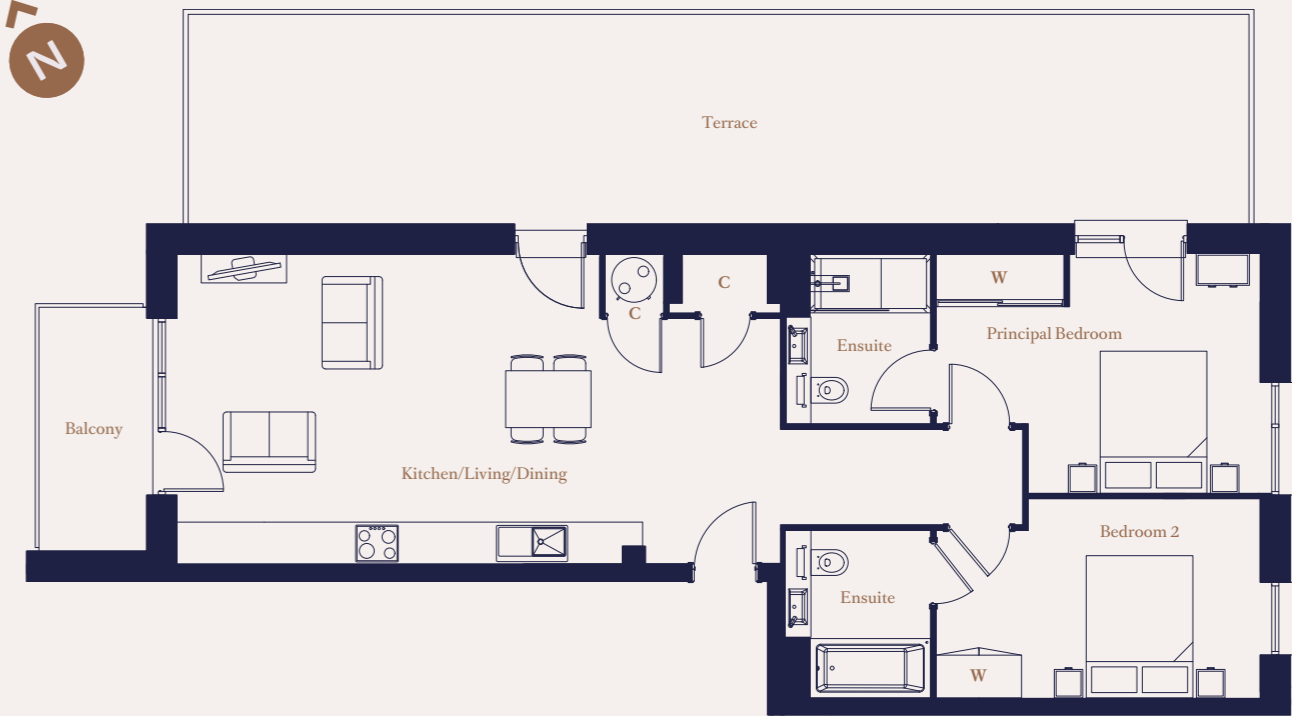
C Cupboard
W Wardrobe

Maximum dimensions are shown. They are intended as a guide only and are subject to change. Not all plans are to scale. Please speak to our sales executive for further information.

THE HAZELWOOD

REPTON HOUSE

2 Bedroom
125



Dimensions

Kitchen/Living/Dining	8.45m x 4.30m	27'9" x 14'2"
Principal Bedroom	4.52m x 3.32m	14'10" x 10'11"
Bedroom 2	4.52m x 2.79m	14'10" x 9'2"
Total Area	79.0 sq m	851 sq ft
Terrace	14.92m x 2.94m	48'11" x 9'8"
Balcony	3.41m x 1.73m	11'2" x 5'8"

Key

C Cupboard
W Wardrobe

Maximum dimensions are shown. They are intended as a guide only and are subject to change. Not all plans are to scale. Please speak to our sales executive for further information.

Floor Locator

Level	Apartments
12	
11	
10	
9	138
8	133
7	
6	
5	116
4	109
3	
2	
1	88
G	
LG	

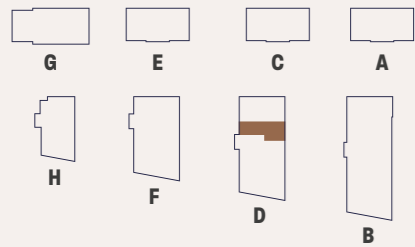
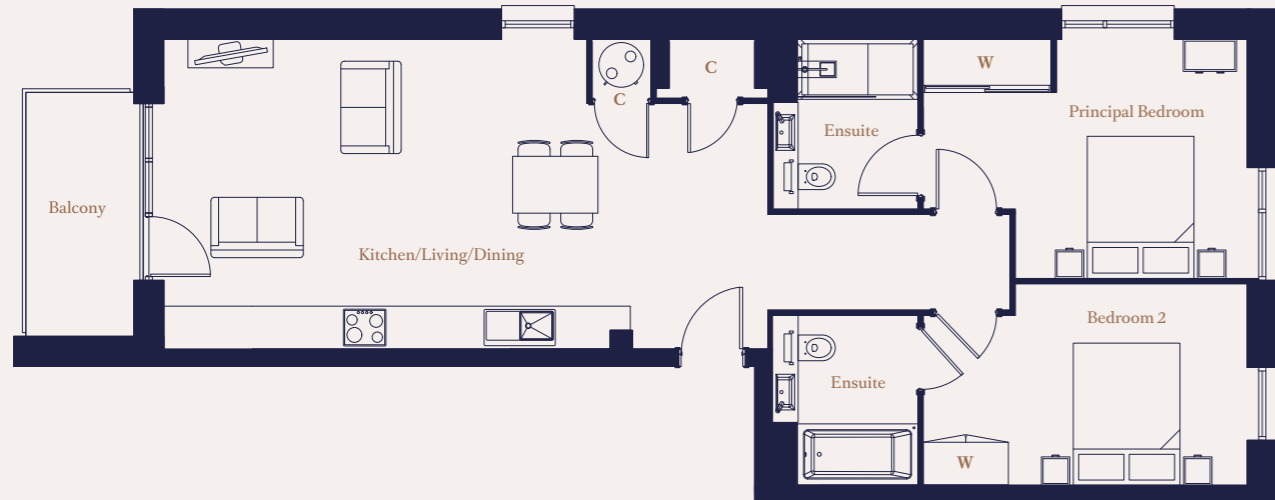
Floor Locator

Level	Apartments
12	
11	
10	
9	
8	
7	125
6	
5	
4	
3	
2	
1	
G	
LG	

THE CHERRY

REPTON HOUSE

2 Bedroom
130, 135, 140, 145, 150



Dimensions

Kitchen/Living/Dining	8.45m x 4.30m	27'9" x 14'2"
Principal Bedroom	4.52m x 3.32m	14'10" x 10'11"
Bedroom 2	4.52m x 2.79m	14'10" x 9'2"
Total Area	79.0 sq m	850 sq ft
Balcony	3.41m x 1.73m	11'2" x 5'8"

Key

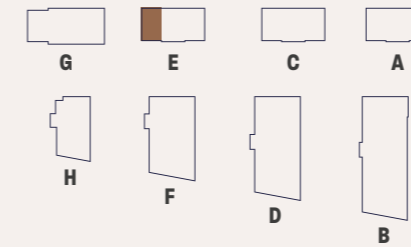
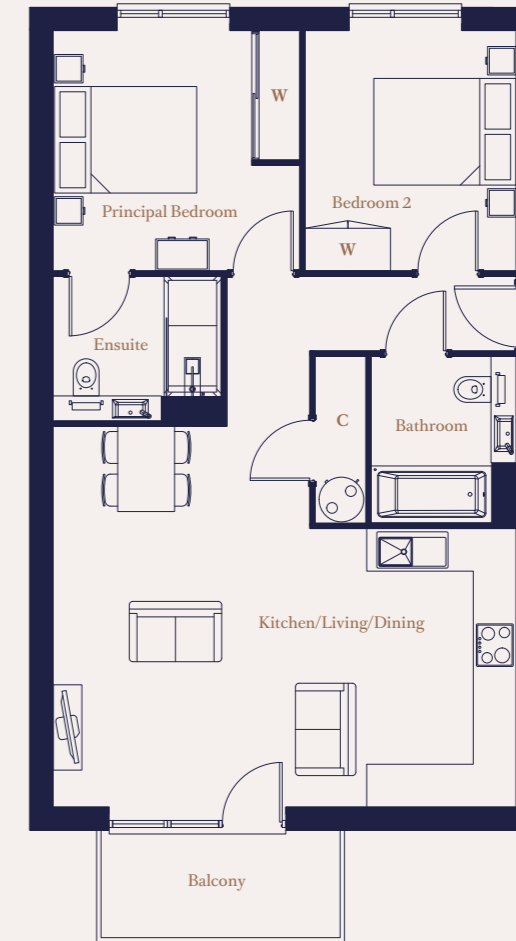
C Cupboard
W Wardrobe

Maximum dimensions are shown. They are intended as a guide only and are subject to change. Not all plans are to scale. Please speak to our sales executive for further information.

THE SPRINGFIELD

COOKE HOUSE

2 Bedroom
156, 158', 159, 161', 162, 164'



Dimensions

Kitchen/Living/Dining	6.49m x 5.33m	21'4" x 17'6"
Principal Bedroom	3.45m x 3.36m	11'4" x 11'0"
Bedroom 2	3.36m x 2.96m	11'0" x 9'9"
Total Area	71.8 sq m	773 sq ft
Balcony	3.34m x 1.40m	10'11" x 4'7"

Key

C Cupboard
W Wardrobe

* Handed plots

Maximum dimensions are shown. They are intended as a guide only and are subject to change. Not all plans are to scale. Please speak to our sales executive for further information.

Floor Locator

Level	Apartments
12	150
11	145
10	140
9	135
8	130
7	
6	
5	
4	
3	
2	
1	
G	
LG	

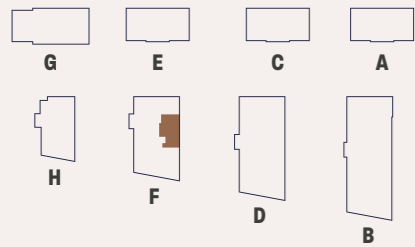
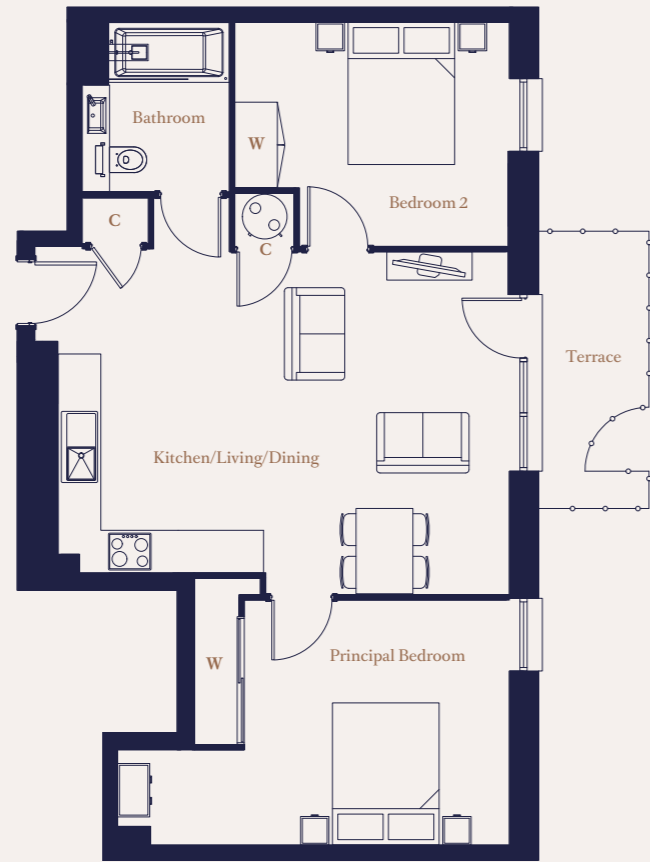
Floor Locator

Level	Apartments
12	
11	
10	
9	
8	
7	
6	
5	
4	
3	162, 164
2	159, 161
1	156, 158
G	
LG	

THE OAKLEIGH

MAY HOUSE

2 Bedroom
166



Dimensions

Kitchen/Living/Dining	6.26m x 4.82m	20'6" x 15'10"
Principal Bedroom	3.67m x 3.29m	12'1" x 10'10"
Bedroom 2	3.81m x 3.11m	12'6" x 10'3"
Total Area	66.4 sq m	715 sq ft
Terrace	3.80m x 1.50m	12'5" x 4'11"

Key

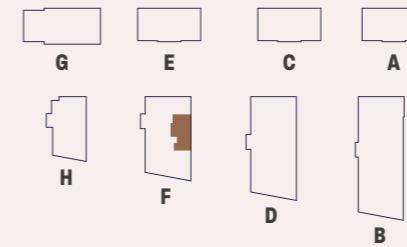
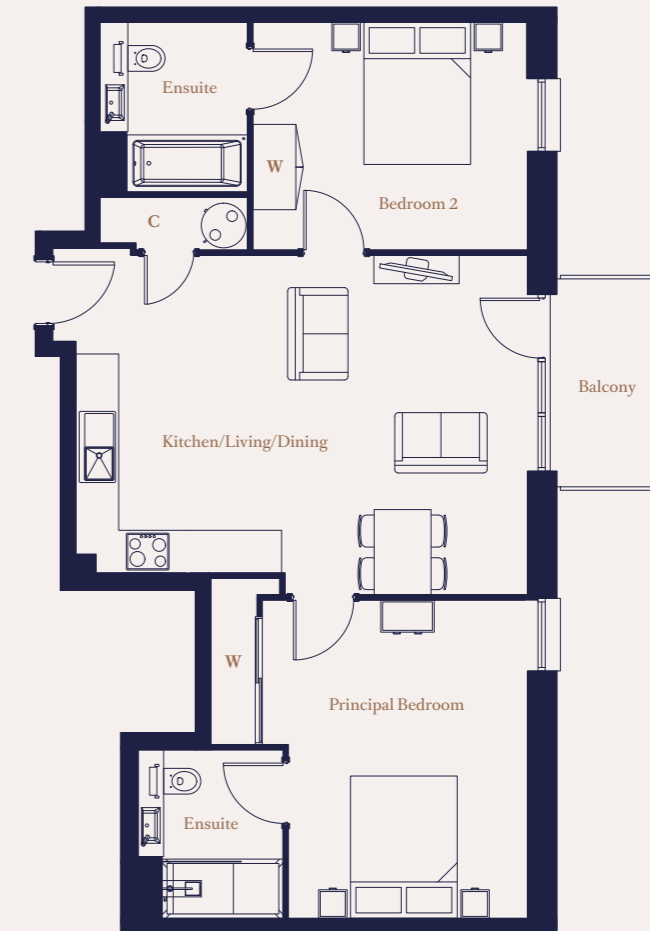
C Cupboard
W Wardrobe

Maximum dimensions are shown. They are intended as a guide only and are subject to change. Not all plans are to scale. Please speak to our sales executive for further information.

THE MAYFARE

MAY HOUSE

2 Bedroom
172, 177, 182, 187, 192, 197,
201, 205, 209, 213



Dimensions

Kitchen/Living/Dining	6.26m x 4.78m	20'6" x 15'8"
Principal Bedroom	4.43m x 4.37m	14'7" x 14'4"
Bedroom 2	3.81m x 3.17m	12'6" x 10'5"
Total Area	72.1 sq m	776 sq ft
Balcony	2.92m x 1.73m	9'7" x 5'8"

Key

C Cupboard
W Wardrobe

Maximum dimensions are shown. They are intended as a guide only and are subject to change. Not all plans are to scale. Please speak to our sales executive for further information.

Floor Locator

Level	Apartments
12	
11	
10	
9	
8	
7	
6	
5	
4	
3	
2	
1	
G	166
LG	

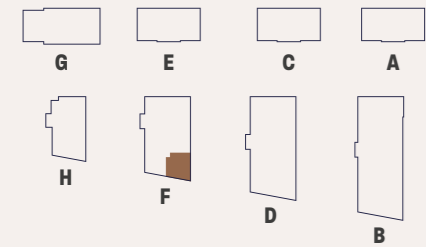
Floor Locator

Level	Apartments
12	
11	
10	213
9	209
8	205
7	201
6	197
5	192
4	187
3	182
2	177
1	172
G	
LG	

THE WARWICK

MAY HOUSE

2 Bedroom
167



Dimensions

Kitchen/Living/Dining	5.64m x 4.92m	18'6" x 16'2"
Principal Bedroom	4.39m x 3.03m	14'5" x 12'7"
Bedroom 2	3.71m x 3.25m	12'2" x 10'8"
Total Area	65.0 sq m	700 sq ft
Balcony	3.52m x 1.73m	11'6" x 5'8"

Key

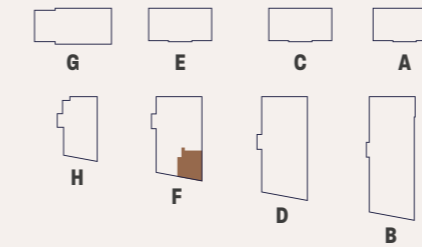
C Cupboard
W Wardrobe

Maximum dimensions are shown. They are intended as a guide only and are subject to change. Not all plans are to scale. Please speak to our sales executive for further information.

THE CLAREMONT

MAY HOUSE

2 Bedroom
173, 178, 183, 188, 193, 198,
202, 206, 210, 214



Dimensions

Kitchen/Living/Dining	5.79m x 4.92m	19'0" x 16'2"
Principal Bedroom	4.56m x 2.94m	15'0" x 9'8"
Bedroom 2	3.83m x 3.03m	12'7" x 9'11"
Total Area	71.2 sq m	767 sq ft
Balcony	3.52m x 1.73m	11'6" x 5'8"

Key

C Cupboard
W Wardrobe

Maximum dimensions are shown. They are intended as a guide only and are subject to change. Not all plans are to scale. Please speak to our sales executive for further information.

Floor Locator

Level	Apartments
12	
11	
10	
9	
8	
7	
6	
5	
4	
3	
2	
1	
G	167
LG	

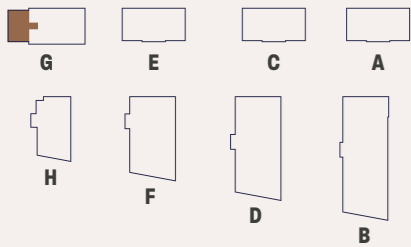
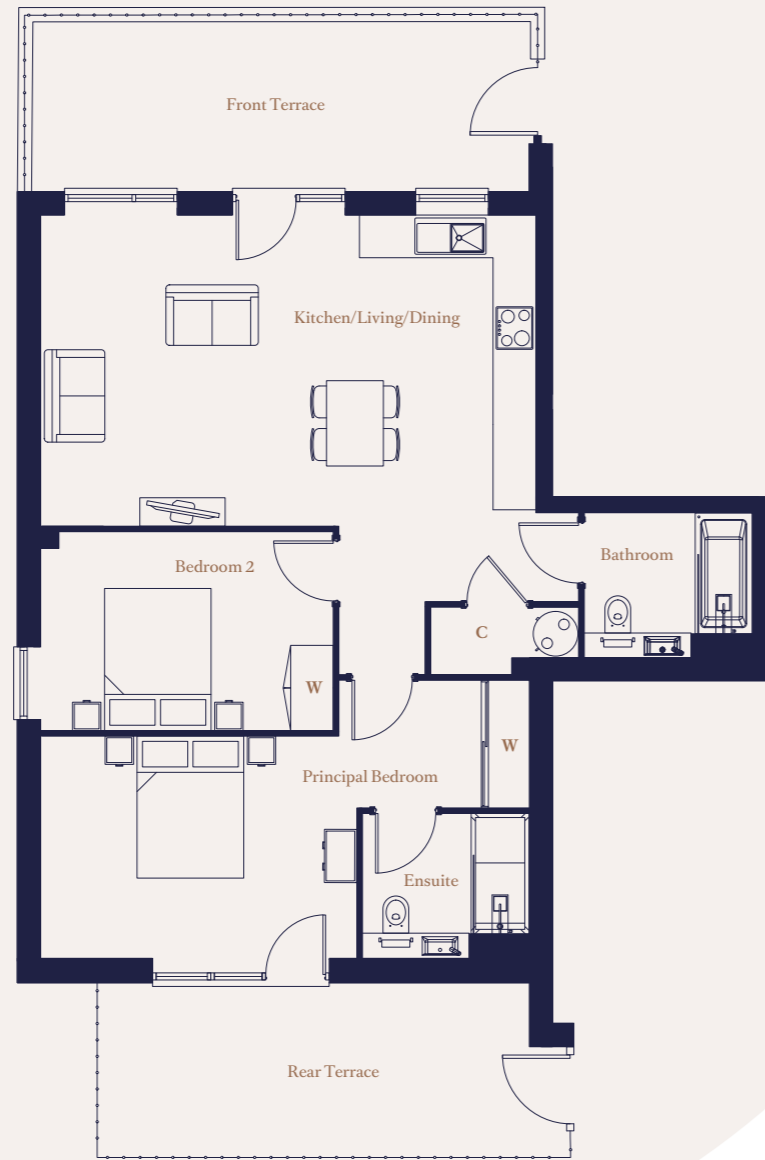
Floor Locator

Level	Apartments
12	
11	
10	214
9	210
8	206
7	202
6	198
5	193
4	188
3	183
2	178
1	173
G	
LG	

THE CASSIO

CAPELL HOUSE

2 Bedroom
216



Dimensions

Kitchen/Living/Dining	6.94m x 5.42m	22'9" x 17'9"
Principal Bedroom	6.85m x 3.12m	22'6" x 10'3"
Bedroom 2	4.10m x 2.80m	13'5" x 9'2"
Total Area	79.8 sq m	859 sq ft
Front Terrace	6.98m x 2.37m	22'11" x 7'9"
Rear Terrace	6.10m x 2.45m	20'0" x 8'0"

Key

C Cupboard
W Wardrobe

Floor Locator

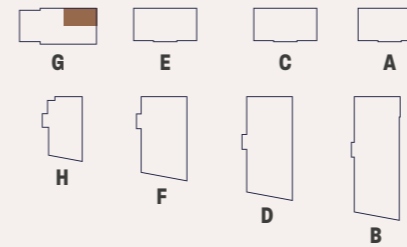
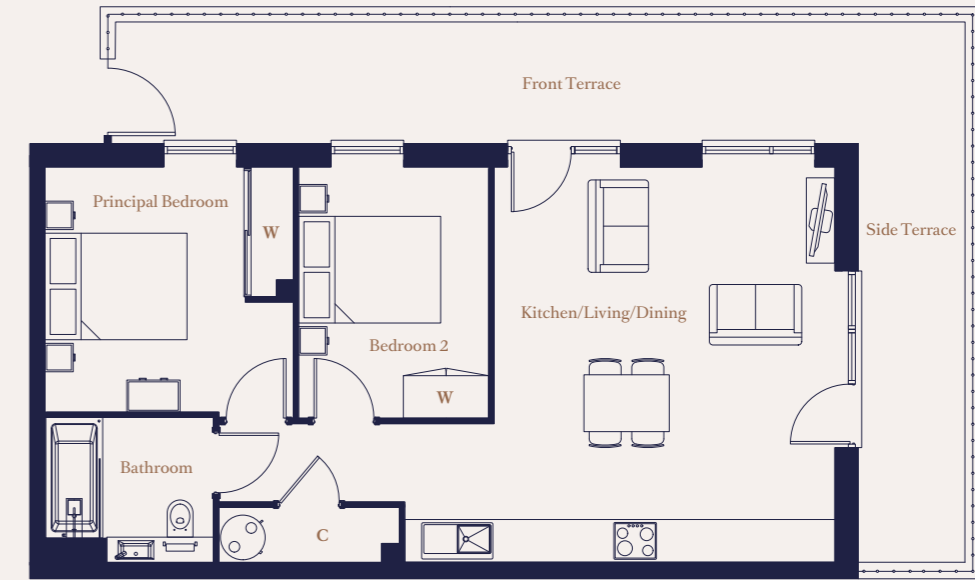
Level	Apartments
12	
11	
10	
9	
8	
7	
6	
5	
4	
3	
2	
1	
G	216
LG	

Maximum dimensions are shown. They are intended as a guide only and are subject to change. Not all plans are to scale. Please speak to our sales executive for further information.

THE OAKLANDS

CAPELL HOUSE

2 Bedroom
217



Dimensions

Kitchen/Living/Dining	6.02m x 5.53m	19'9" x 18'2"
Principal Bedroom	3.47m x 3.42m	11'5" x 11'3"
Bedroom 2	3.51m x 2.67m	11'6" x 8'9"
Total Area	62.8 sq m	676 sq ft
Front Terrace	12.00m x 1.70m	39'4" x 5'6"
Side Terrace	7.71m x 1.50m	25'3" x 4'11"

Key

C Cupboard
W Wardrobe

Floor Locator

Level	Apartments
12	
11	
10	
9	
8	
7	
6	
5	
4	
3	
2	
1	
G	217
LG	

Maximum dimensions are shown. They are intended as a guide only and are subject to change. Not all plans are to scale. Please speak to our sales executive for further information.

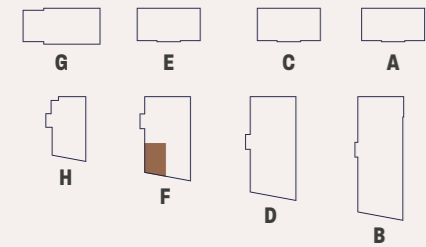
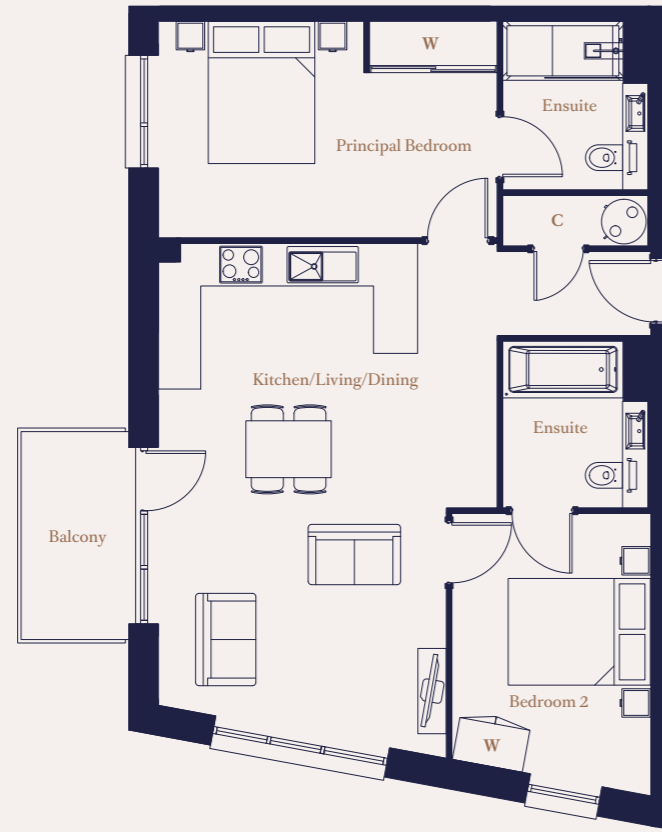


THE ELMCOTE

MAY HOUSE

2 Bedroom

174, 179, 184, 189, 194, 199,
203, 207, 211, 215



Dimensions

Kitchen/Living/Dining	6.46m x 4.71m	21'2" x 15'6"
Principal Bedroom	4.71m x 3.01m	15'6" x 9'11"
Bedroom 2	4.01m x 2.75m	13'2" x 9'0"
Total Area	70.9 sq m	764 sq ft
Balcony	2.92m x 1.73m	9'7" x 5'8"

Key

C Cupboard
W Wardrobe

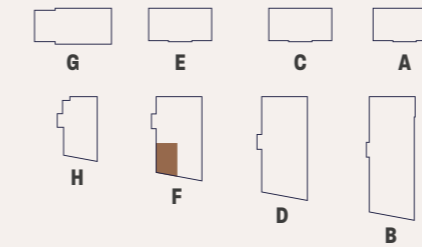
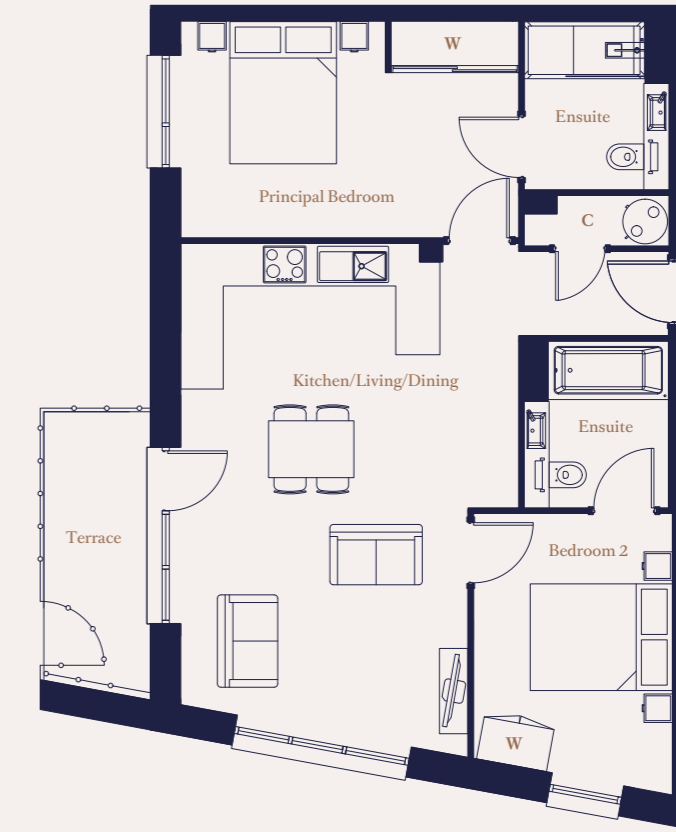
Maximum dimensions are shown. They are intended as a guide only and are subject to change. Not all plans are to scale. Please speak to our sales executive for further information.

THE LINDEN

MAY HOUSE

2 Bedroom

168



Dimensions

Kitchen/Living/Dining	6.46m x 4.71m	21'2" x 15'6"
Principal Bedroom	4.71m x 3.01m	15'6" x 9'11"
Bedroom 2	4.01m x 2.75m	13'2" x 9'0"
Total Area	71.0 sq m	764 sq ft
Terrace	3.78m x 1.50m	12'4" x 4'11"

Key

C Cupboard
W Wardrobe

Maximum dimensions are shown. They are intended as a guide only and are subject to change. Not all plans are to scale. Please speak to our sales executive for further information.

Floor Locator

Level	Apartments
12	
11	
10	215
9	211
8	207
7	203
6	199
5	194
4	189
3	184
2	179
1	174
G	
LG	

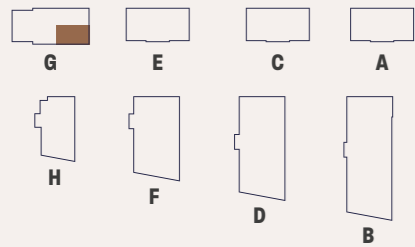
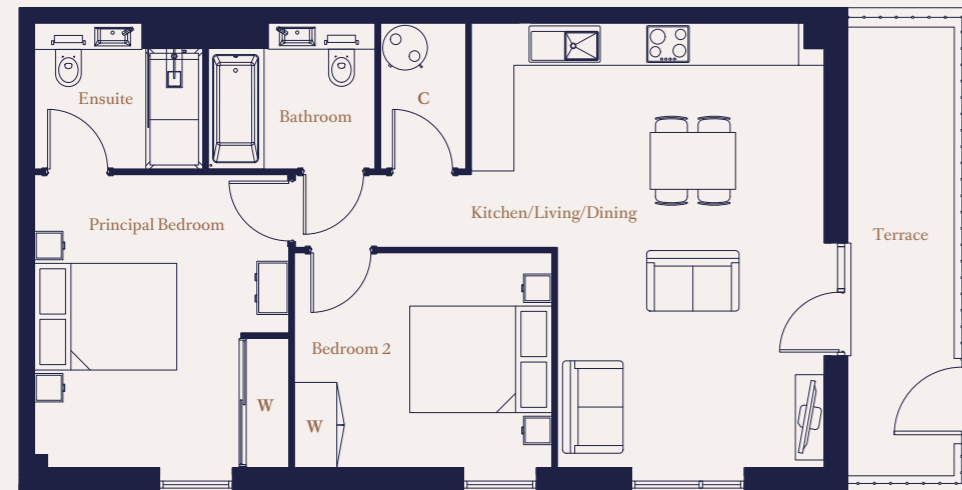
Floor Locator

Level	Apartments
12	
11	
10	
9	
8	
7	
6	
5	
4	
3	
2	
1	
G	168
LG	

THE FULLERIAN

CAPELL HOUSE

2 Bedroom
218



Dimensions

Kitchen/Living/Dining	6.21m x 4.94m	20'5" x 16'3"
Principal Bedroom	4.10m x 3.56m	13'6" x 11'8"
Bedroom 2	3.62m x 3.05m	11'11" x 9'10"
Total Area	69.8 sq m	752 sq ft
Terrace	6.47m x 1.50m	21'2" x 4'11"

Key

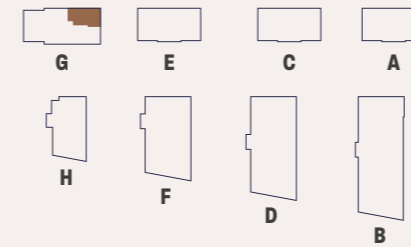
C Cupboard
W Wardrobe

Maximum dimensions are shown. They are intended as a guide only and are subject to change. Not all plans are to scale. Please speak to our sales executive for further information.

THE DURBAN

CAPELL HOUSE

2 Bedroom
222, 226, 229



Dimensions

Kitchen/Living/Dining	4.56m x 6.08m	15'0" x 19'11"
Principal Bedroom	4.11m x 3.20m	13'6" x 10'6"
Bedroom 2	3.14m x 2.14m	10'4" x 7'11"
Total Area	62.2 sq m	670 sq ft
Balcony	3.34m x 1.40m	10'11" x 4'7"

Key

C Cupboard
W Wardrobe

Maximum dimensions are shown. They are intended as a guide only and are subject to change. Not all plans are to scale. Please speak to our sales executive for further information.

Floor Locator

Level	Apartments
12	
11	
10	
9	
8	
7	
6	
5	
4	
3	
2	
1	
G	218
LG	

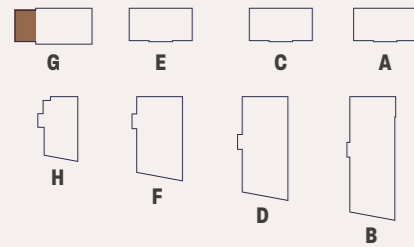
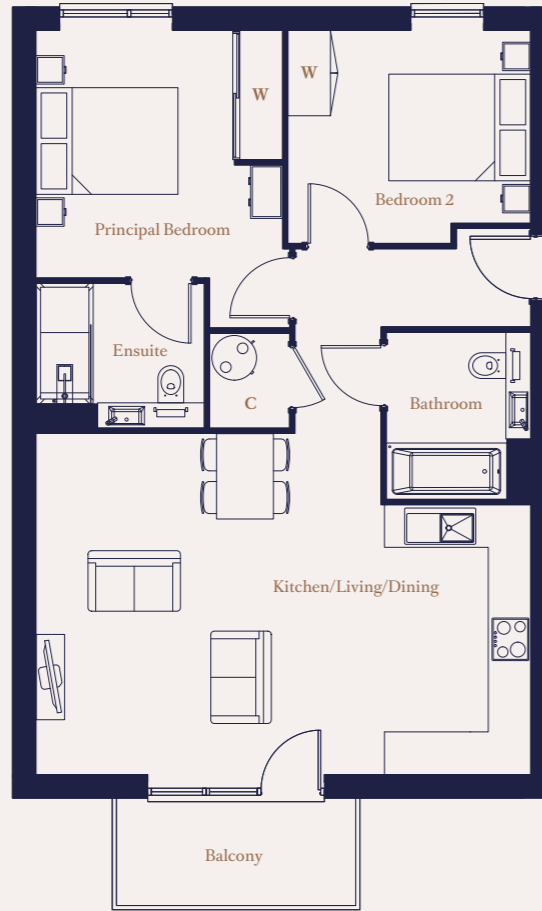
Floor Locator

Level	Apartments
12	
11	
10	
9	
8	
7	
6	
5	
4	
3	229
2	226
1	222
G	
LG	

THE FEARNLEY

CAPELL HOUSE

2 Bedroom
219, 223



Dimensions

Kitchen/Living/Dining	6.94m x 4.78m	22'9" x 15'8"
Principal Bedroom	3.45m x 3.36m	11'4" x 11'0"
Bedroom 2	3.42m x 2.97m	11'3" x 9'9"
Total Area	73.5 sq m	791 sq ft
Balcony	3.34m x 1.40m	10'11" x 4'7"

Key

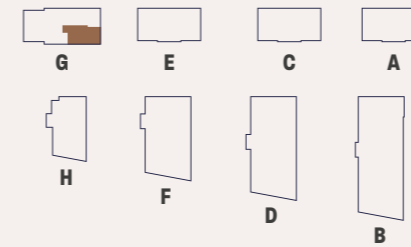
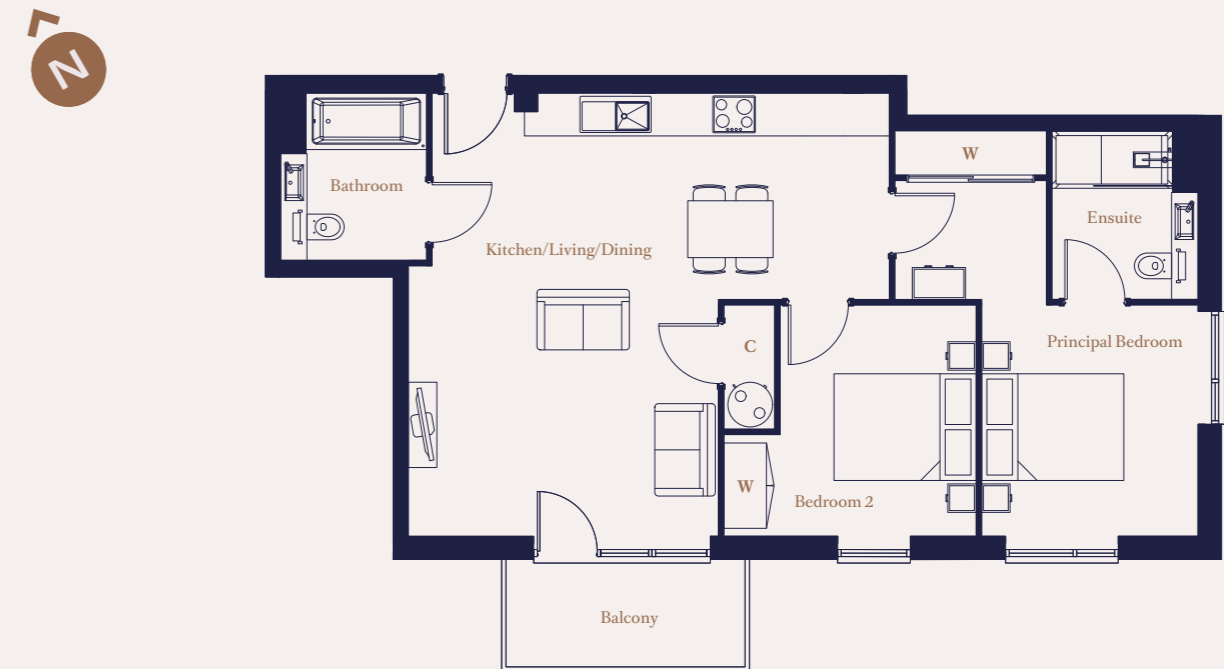
C Cupboard
W Wardrobe

Maximum dimensions are shown. They are intended as a guide only and are subject to change. Not all plans are to scale. Please speak to our sales executive for further information.

THE MARLBOROUGH

CAPELL HOUSE

2 Bedroom
221, 225, 228



Dimensions

Kitchen/Living/Dining	6.43m x 6.20m	21'1" x 20'4"
Principal Bedroom	5.65m x 3.02m	18'7" x 9'11"
Bedroom 2	3.55m x 3.23m	11'8" x 10'7"
Total Area	71.9 sq m	670 sq ft
Balcony	3.34m x 1.40m	10'11" x 4'7"

Key

C Cupboard
W Wardrobe

Maximum dimensions are shown. They are intended as a guide only and are subject to change. Not all plans are to scale. Please speak to our sales executive for further information.

Floor Locator

Level	Apartments
12	
11	
10	
9	
8	
7	
6	
5	
4	
3	
2	223
1	219
G	
LG	

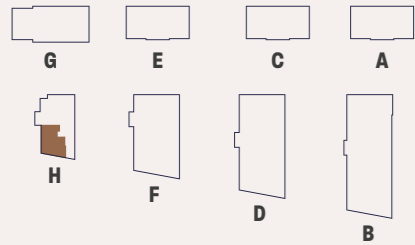
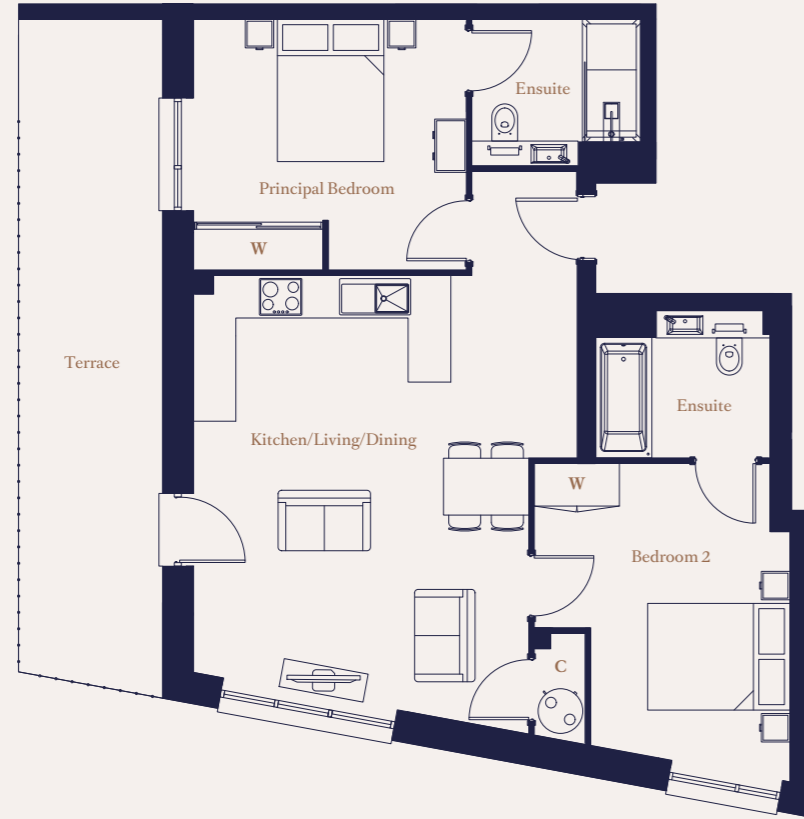
Floor Locator

Level	Apartments
12	
11	
10	
9	
8	
7	
6	
5	
4	
3	228
2	225
1	221
G	
LG	

THE HILLCROFT

VERRIO HOUSE

2 Bedroom
230



Dimensions

Kitchen/Living/Dining	5.57m x 4.69m	18'3" x 15'5"
Principal Bedroom	3.82m x 3.50m	12'6" x 11'6"
Bedroom 2	4.45m x 3.58m	14'8" x 11'9"
Total Area	72.3 sq m	778 sq ft
Terrace	8.96m x 2.02m	29'4" x 6'7"

Key

C Cupboard
W Wardrobe

Maximum dimensions are shown. They are intended as a guide only and are subject to change. Not all plans are to scale. Please speak to our sales executive for further information.

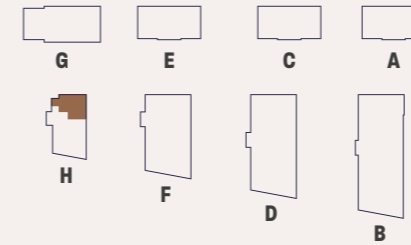
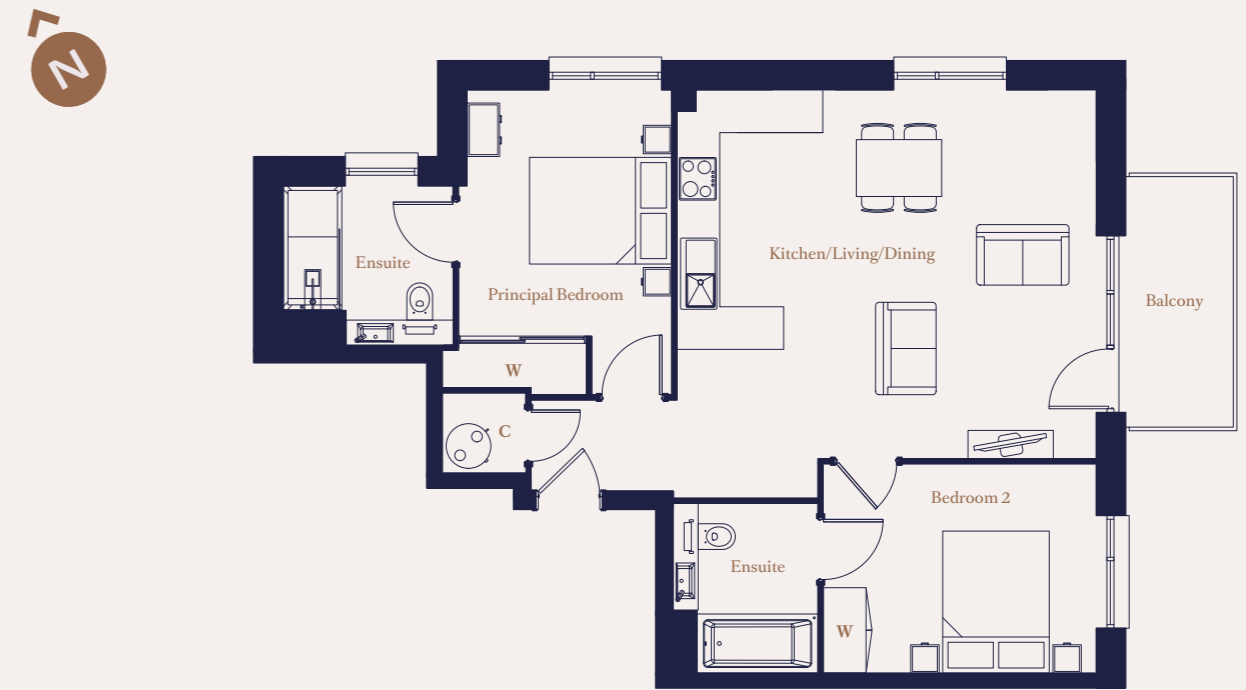
Floor Locator

Level	Apartments
12	
11	
10	
9	
8	
7	
6	
5	
4	
3	
2	
1	
G	
LG	230

THE VIVIAN

VERRIO HOUSE

2 Bedroom
231, 234, 237, 240, 243, 246



Dimensions

Kitchen/Living/Dining	5.84m x 5.13m	19'2" x 16'10"
Principal Bedroom	4.23m x 3.00m	13'11" x 9'10"
Bedroom 2	3.78m x 2.90m	12'5" x 9'6"
Total Area	71.4 sq m	769 sq ft
Balcony	3.52m x 1.73m	11'6" x 5'8"

Key

C Cupboard
W Wardrobe

Maximum dimensions are shown. They are intended as a guide only and are subject to change. Not all plans are to scale. Please speak to our sales executive for further information.

Floor Locator

Level	Apartments
12	
11	
10	
9	
8	
7	
6	
5	246
4	243
3	240
2	237
1	234
G	231
LG	

THE LAVROCK

VERRIO HOUSE

2 Bedroom
233, 236, 239, 242, 245, 248



Dimensions

Kitchen/Living/Dining	5.61m x 4.41m	18'5" x 14'6"
Principal Bedroom	5.20m x 3.17m	17'1" x 10'5"
Bedroom 2	3.43m x 2.99m	11'3" x 9'10"
Total Area	73.8 sq m	795 sq ft
Balcony 1	4.62m x 1.73m	15'1" x 5'8"
Balcony 2	3.52m x 1.73m	11'6" x 5'8"

Key

C Cupboard
W Wardrobe

Floor Locator

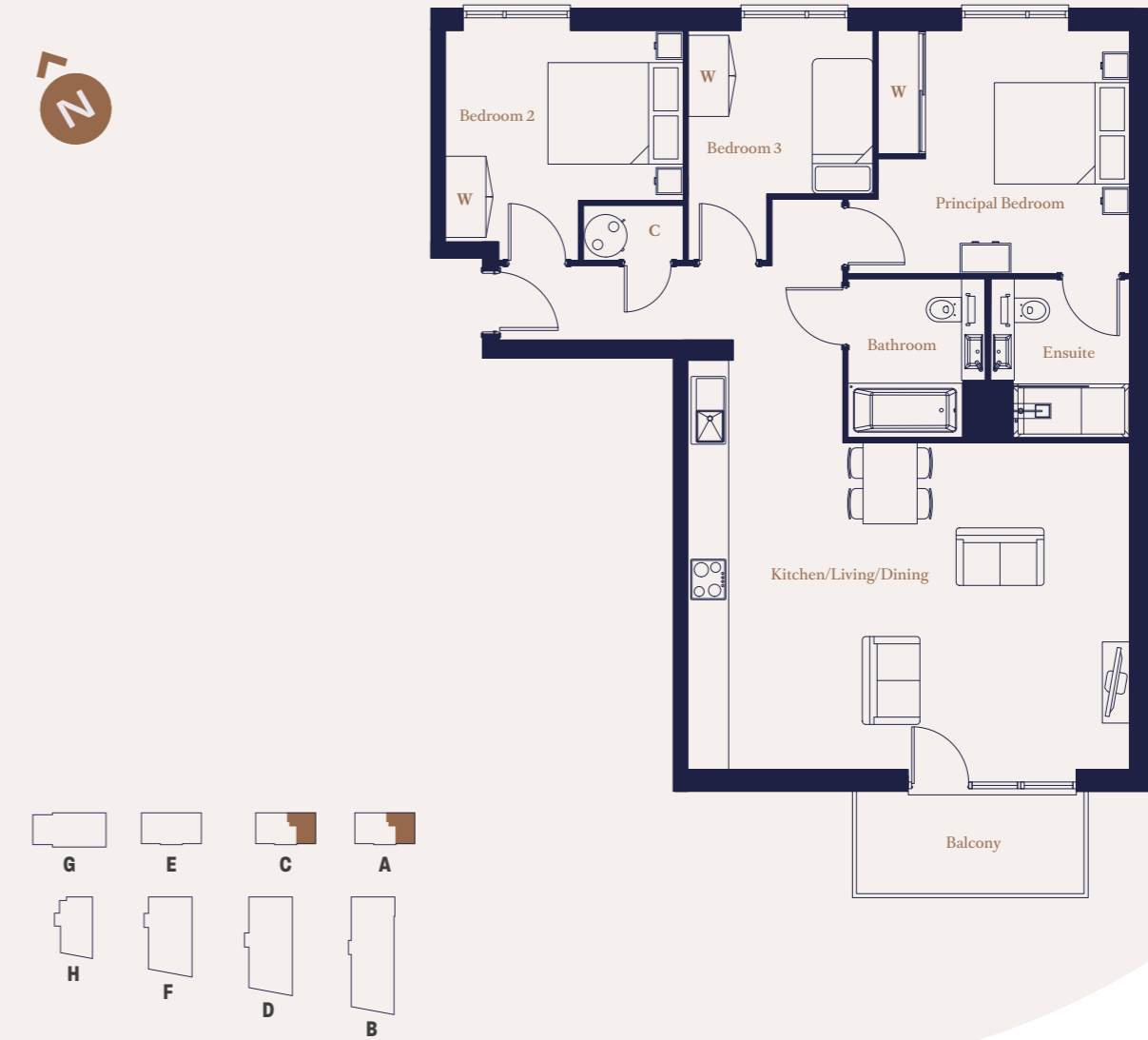
Level	Apartments
12	
11	
10	
9	
8	
7	
6	
5	248
4	245
3	242
2	239
1	236
G	233
LG	

Maximum dimensions are shown. They are intended as a guide only and are subject to change. Not all plans are to scale. Please speak to our sales executive for further information.

THE REMBRANDT

GIBBONS HOUSE, BRIDGEMAN HOUSE

3 Bedroom
5, 8, 73, 76



Dimensions

Kitchen/Living/Dining	6.49m x 4.80m	21'4" x 15'9"
Principal Bedroom	3.71m x 3.57m	12'2" x 11'9"
Bedroom 2	3.49m x 3.38m	11'5" x 11'1"
Bedroom 3	3.38m x 2.73m	11'1" x 9'0"
Total Area	87.3 sq m	939 sq ft
Balcony	3.34m x 1.40m	10'11" x 4'7"

Key

C Cupboard
W Wardrobe

Floor Locator

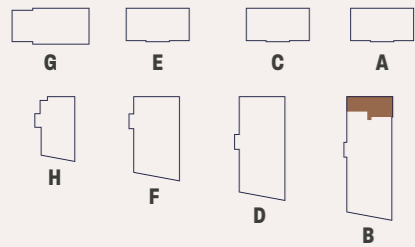
Level	Apartments
12	
11	
10	
9	
8	
7	
6	
5	
4	
3	
2	8 (A), 76 (C)
1	5 (A), 73 (C)
G	
LG	

Maximum dimensions are shown. They are intended as a guide only and are subject to change. Not all plans are to scale. Please speak to our sales executive for further information.

THE HARWOODS

WYATT HOUSE

3 Bedroom
35, 42



Dimensions

Kitchen/Living/Dining	6.83m x 4.63m	22'5" x 15'3"
Principal Bedroom	4.12m x 3.49m	13'6" x 11'6"
Bedroom 2	3.91m x 2.97m	12'10" x 9'9"
Bedroom 3	2.97m x 2.15m	9'9" x 7'1"
Total Area	88.6 sq m	954 sq ft
Balcony	2.92m x 1.73m	9'7" x 5'8"

Key

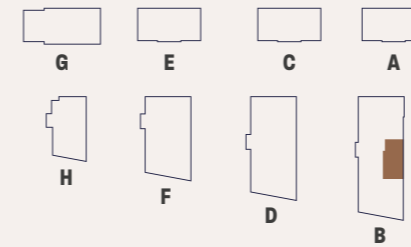
C Cupboard
W Wardrobe

Maximum dimensions are shown. They are intended as a guide only and are subject to change. Not all plans are to scale. Please speak to our sales executive for further information.

THE KELMSCOTT

WYATT HOUSE

3 Bedroom
37, 44, 49, 53, 57, 61, 65



Dimensions

Kitchen/Living/Dining	6.60m x 5.05m	21'8" x 16'7"
Principal Bedroom	4.49m x 2.98m	14'9" x 9'10"
Bedroom 2	3.46m x 3.23m	11'5" x 10'7"
Bedroom 3	4.25m x 2.11m	14'0" x 6'11"
Total Area	88.4 sq m	952 sq ft
Balcony	2.92m x 1.73m	9'7" x 5'8"

Key

C Cupboard
W Wardrobe

Maximum dimensions are shown. They are intended as a guide only and are subject to change. Not all plans are to scale. Please speak to our sales executive for further information.

Floor Locator

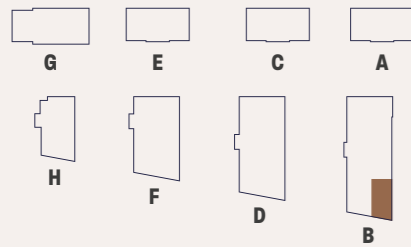
Level	Apartments
12	
11	
10	65
9	61
8	57
7	53
6	49
5	44
4	37
3	
2	
1	
G	
LG	

THE ROSE

WYATT HOUSE

3 Bedroom

38, 45, 50, 54, 58, 62, 66



Dimensions

Kitchen	4.86m x 2.18m	15'11" x 10'5"
Living/Dining	6.62m x 4.37m	21'9" x 14'4"
Principal Bedroom	4.49m x 2.71m	14'9" x 8'11"
Bedroom 2	3.35m x 3.20m	11'0" x 10'6"
Bedroom 3	3.11m x 2.16m	10'3" x 8'11"
Total Area	88.0 sq m	948 sq ft
Balcony	2.92m x 1.73m	9'7" x 5'8"

Key

C Cupboard
W Wardrobe

Maximum dimensions are shown. They are intended as a guide only and are subject to change. Not all plans are to scale. Please speak to our sales executive for further information.

Floor Locator

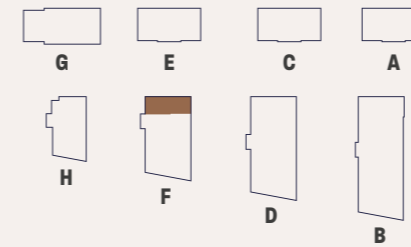
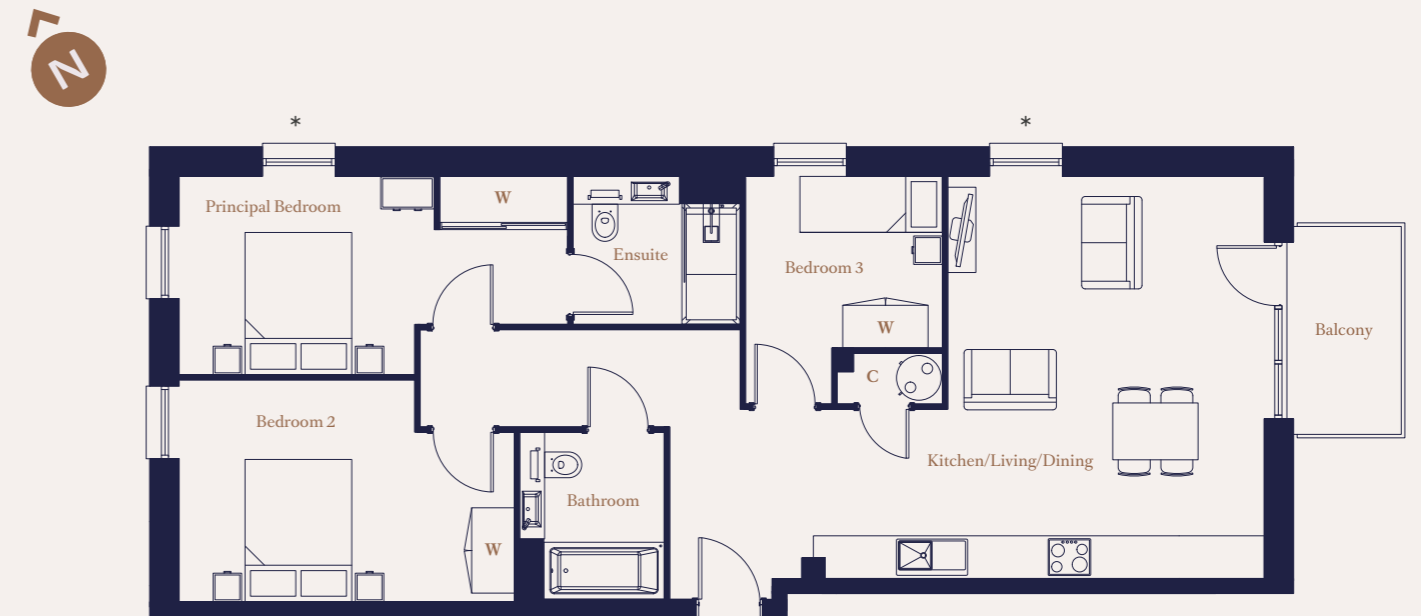
Level	Apartments
12	
11	
10	66
9	62
8	58
7	54
6	50
5	45
4	38
3	
2	
1	
G	
LG	

THE MALKIN

MAY HOUSE

3 Bedroom

165*, 171, 176, 181, 186, 191, 196



Dimensions

Kitchen/Living/Dining	6.29m x 5.57m	20'8" x 18'3"
Principal Bedroom	5.41m x 2.74m	17'9" x 9'0"
Bedroom 2	4.66m x 3.08m	15'4" x 10'1"
Bedroom 3	3.15m x 2.77m	10'4" x 9'1"
Total Area	88.6 sq m	954 sq ft
Balcony	2.92m x 1.73m	9'7" x 5'8"

Key

C Cupboard
W Wardrobe

* Apartment 165 has these windows omitted

Maximum dimensions are shown. They are intended as a guide only and are subject to change. Not all plans are to scale. Please speak to our sales executive for further information.

Floor Locator

Level	Apartments
12	
11	
10	
9	
8	
7	
6	196
5	191
4	186
3	181
2	176
1	171
G	165
LG	

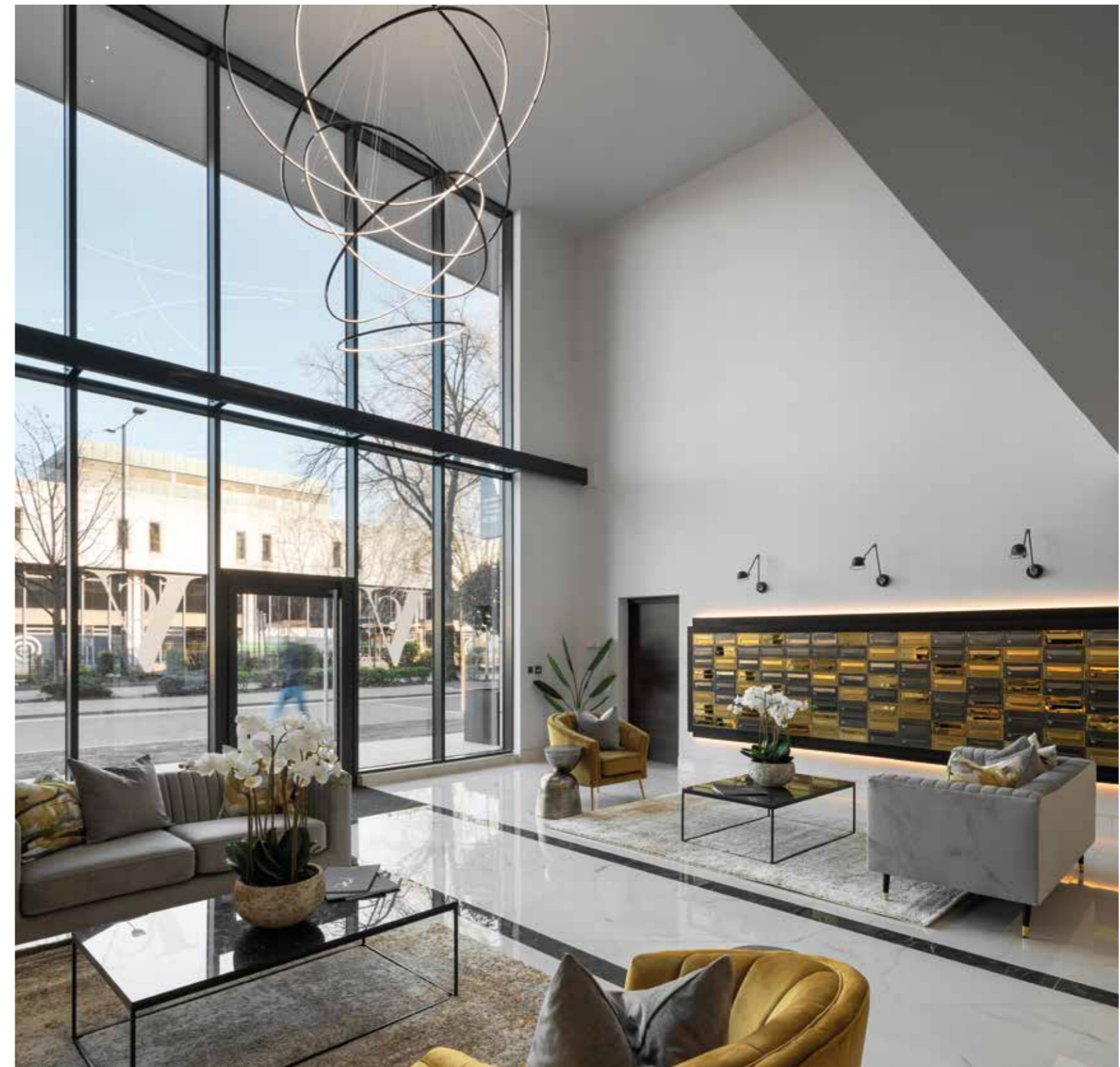
ABOUT WESTON HOMES

Built with Passion, Delivered with Pride

Weston Homes was formed in 1987 by Bob Weston, establishing what has now become one of the major property developers in the South East of England.

Weston Homes has established a reputation for high quality design and build standards, delivered with a passionate desire to make a genuine difference to the lives of our customers and to leave a legacy of which we are justly proud.

Continually re-assessing the marketplace, Weston Homes has combined the traditional skills of house-building with the ever-expanding opportunities created by new technology. The company has taken a revolutionary approach to property development - many of our properties' components are now pre-manufactured and tested in our own carefully controlled Weston-run factory rather than on site. This enables the efficient fitting at a late stage of construction of fixtures such as kitchen worktops, wardrobes and bathroom vanity units which incorporate bespoke basins, storage cabinets and associated plumbing. This minimises wasted materials whilst maximising the quality of your brand new home.



Weston Homes provides properties to exceed the expectations of purchasers both in terms of quality and value for money. Projects are hugely varied, ranging from select housing developments to large-scale city apartment complexes of many hundreds of homes.

As well as new-build, the company has extensive experience of refurbishment and restoration work, breathing new life into historic and Listed buildings to give new purpose to Britain's architectural heritage.

Weston Homes Plc
Weston Group Business Centre
Parsonage Road
Takeley, Essex
CM22 6PU



Photograph is indicative only and shows an interior layout from a similar development.



The Laundry Works
Sydney Road, Watford, WD18 7PL
weston-homes.com | 01923 962357

Disclaimer

These particulars are set out as a general outline only for the guidance of intending purchasers or lessees and do not constitute, nor constitute part of, an offer or contract.

All descriptions, dimensions, references to condition and necessary permissions for use and occupation, and other details are given without responsibilities and any intending purchasers or tenants should not rely on them as statements or representations of fact but must satisfy themselves by inspection or otherwise as to the correctness of each of them.

The information contained in this brochure is for guidance only. Weston Homes Plc operates a policy of continuous product development and features may therefore vary from time to time.

Floorplans and dimensions can only be given as a guide and are indicative of the type only. The computer-generated images, floorplans, configuration and layouts are included for guidance only, please refer to drawings in the sales suite. It should be noted that the representations of The Laundry Works, whilst similar to the development, may not necessarily be accurate in every aspect.

These particulars should not be relied on as accurately describing any of the specific matters described by any order under the Consumer Protection from Unfair Trading Regulations (2008). This information does not constitute a contract of warranty. All details are correct as above at time of going to press. The Laundry Works is the marketing name to use until a permanent postal address has been issued.

