



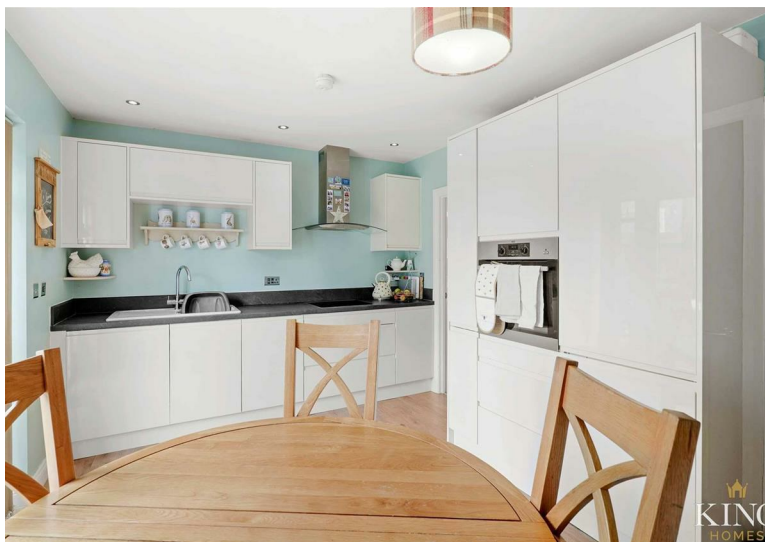
**King Edward View, South Littleton, WR11 8UD**

**Offers in excess of £300,000**





**\*\* Three Double Bedrooms \*\* Rural \*\* Modern Finish \*\*Family Bathroom and En-Suite \*\***A modern three double bedroom home set within a small and exclusive development, offering spacious accommodation and beautiful rural views to the rear. Features include a bright living room, contemporary kitchen/dining room, utility room, en-suite to the principal bedroom, and a generous fully enclosed rear garden with lawn, patio, planted borders, and storage shed. Ample driveway parking.



Situated in a small and exclusive development, this modern three-bedroom home offers spacious and stylish accommodation throughout. The property benefits from a generous driveway with ample parking and enjoys beautiful rural views to the rear.

The ground floor features a welcoming entrance hall leading to a bright and airy living room, while the contemporary kitchen/dining room spans the rear of the home and opens directly to the garden – ideal for both everyday living and entertaining. A separate utility room and downstairs WC add to the practicality of the layout.

Upstairs, there are three well-proportioned double bedrooms, including a spacious principal bedroom with fitted wardrobes and a sleek en-suite shower room. A modern family bathroom serves the remaining bedrooms.

Outside, the generous rear garden is fully enclosed by fencing and enjoys a high degree of privacy. It is mainly laid to lawn with attractive planted borders, a paved patio area perfect for outdoor dining, and a useful storage shed.

This impressive home combines contemporary design with a peaceful setting and countryside outlook, making it perfect for families or professionals seeking comfort, space, and convenience.

Hall	
Kitchen/Dining Room	13'5" x 10'0" (4.10m x 3.06m)
Utility	5'3" x 5'1" (1.62m x 1.57m)
W.C	
Living Room	13'6" x 10'8" (4.13m x 3.27m)
Landing	
Bedroom 1	13'5" x 10'0" (4.10m x 3.06m)
En-suite	5'3" x 8'3" (1.62m x 2.52m)
Bedroom 2	9'6" x 16'5" (2.90m x 5.02m)
Bedroom 3	9'1" x 10'9" (2.79m x 3.28m)
Bathroom	6'3" x 7'1" (1.92m x 2.18m)

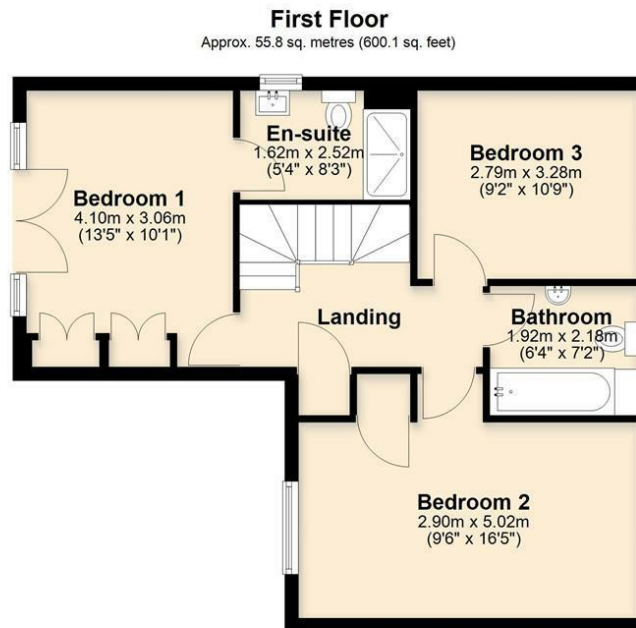
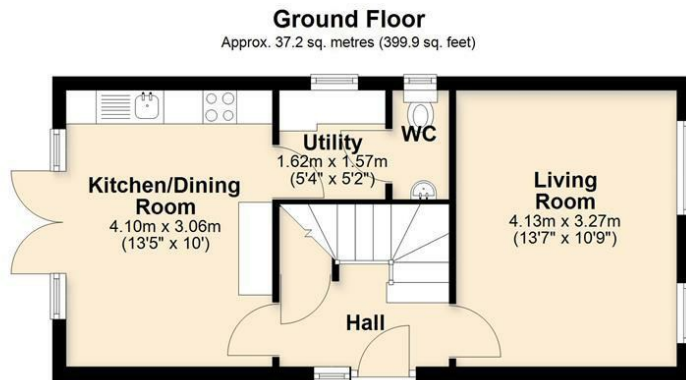












Total area: approx. 92.9 sq. metres (1000.0 sq. feet)

