



Old School Mead, Alcester, B50 4AW

Price £112,500



This exceptional property is an ideal opportunity for first-time buyers, available for sale with a 50% shared ownership arrangement. The mid-terrace residence features an entrance hallway that leads to a downstairs cloakroom and an archway that opens into the fitted kitchen area. The living area includes stairs ascending to the first floor and double doors that provide access to a conservatory constructed of UPVC, which in turn leads to the rear garden. On the first floor, there are two bedrooms, with the master bedroom benefiting from an en suite bathroom, in addition to a separate bathroom. The rear garden is predominantly laid to lawn, complemented by a paved patio area suitable for outdoor dining, along with a shed for storage. Furthermore, there is an allocated parking space for one vehicle.



Hallway

W/C

Kitchen 9'4" x 7'2" (2.86m x 2.19m)

Living Room 11'5" x 14'7" (3.50m x 4.47m)

Conservatory 6'9" x 10'9" (2.06m x 3.30m)

Bedroom One 11'5" x 11'4" (3.49m x 3.46m)

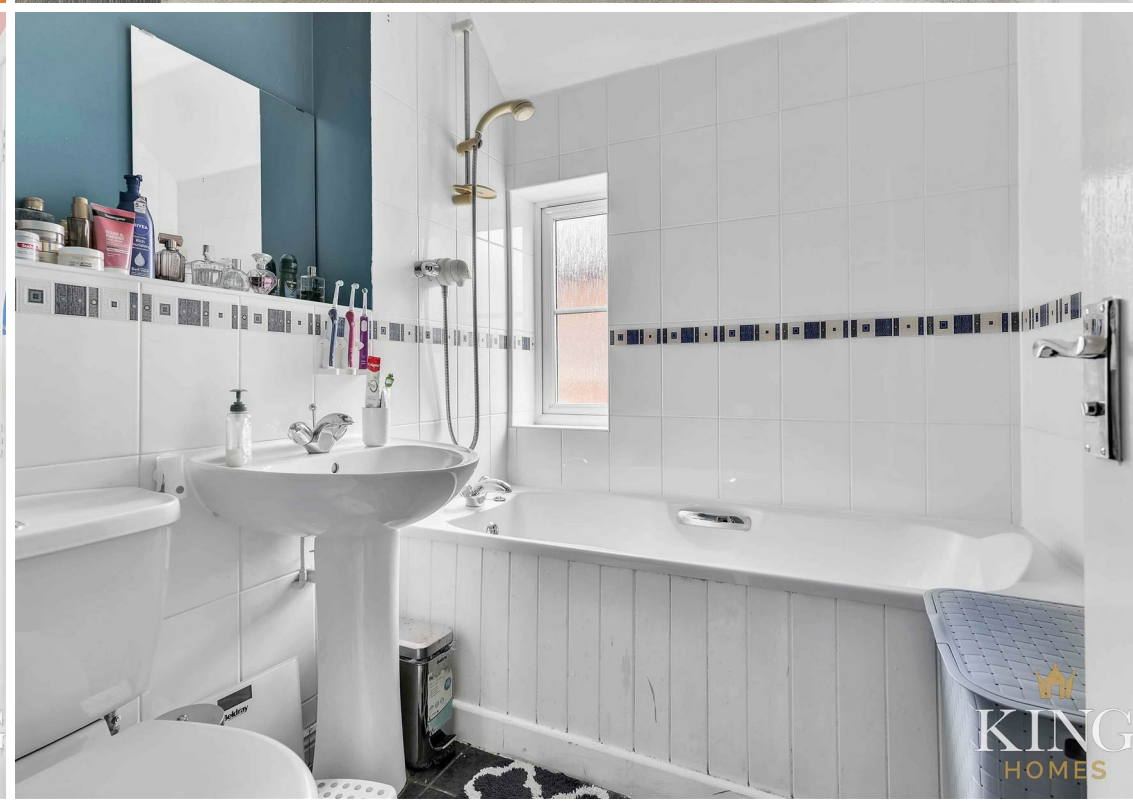
En suite 5'3" x 5'9" (1.61m x 1.77m)

Bedroom Two 9'8" x 8'0" (2.96m x 2.45m)

Bathroom 5'3" x 5'8" (1.62m x 1.75m)

Shared ownership information

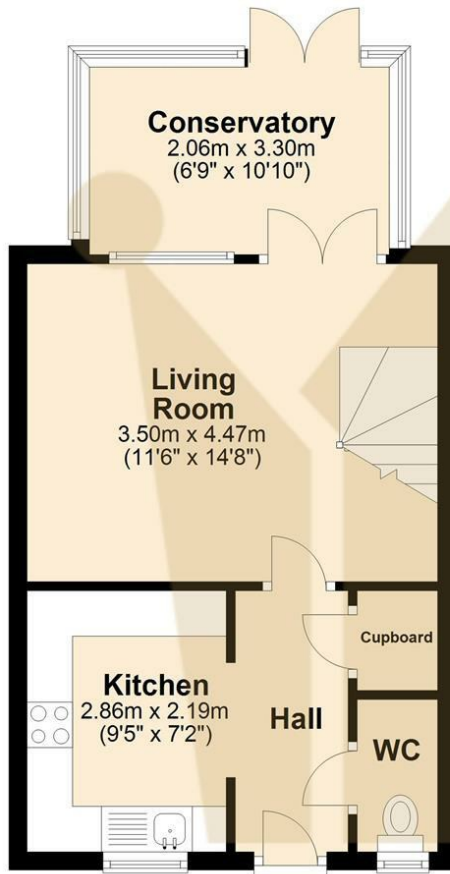
The remaining 50% share is held by Orbit Housing Association, with a monthly rental fee of £356.83. The lease commenced in June 2006 and has a duration of 99 years, leaving approximately 81 years left on the lease. It is advisable to verify this information with your solicitor.





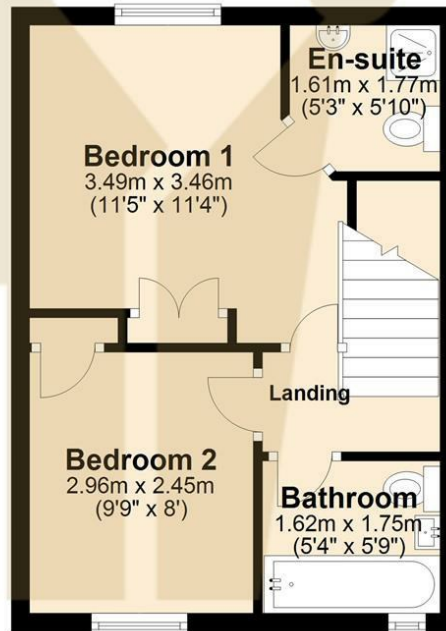
Ground Floor

Approx. 36.2 sq. metres (389.4 sq. feet)

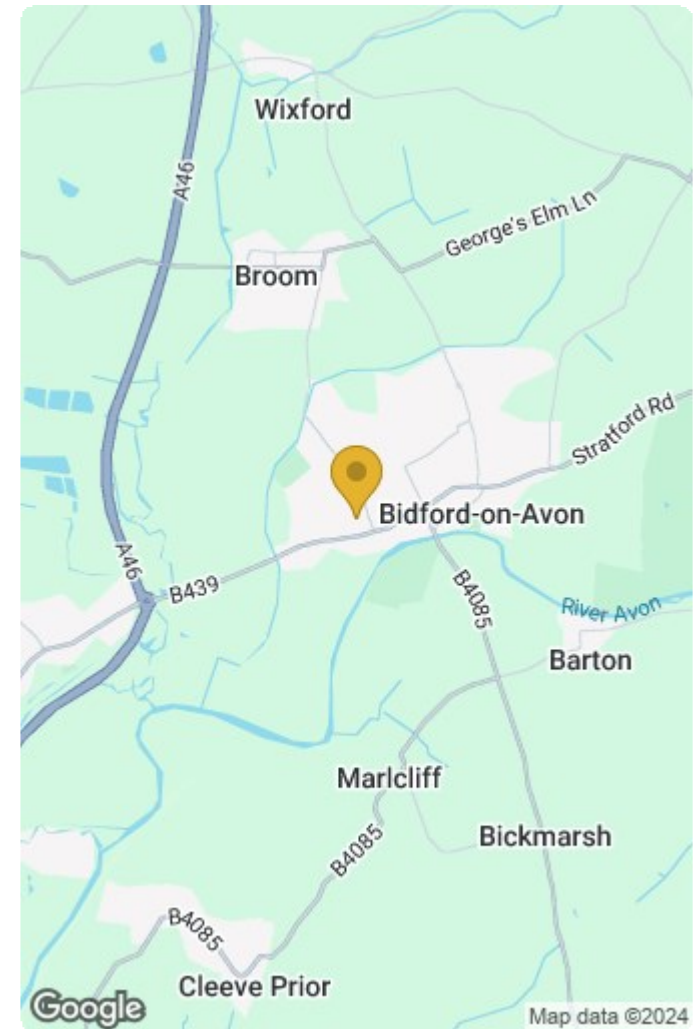


First Floor

Approx. 29.0 sq. metres (311.8 sq. feet)



Total area: approx. 65.1 sq. metres (701.2 sq. feet)



Energy Efficiency Rating		Current	Potential
Very energy efficient - lower running costs			
(92 plus) A			91
(81-91) B		76	
(69-80) C			
(55-68) D			
(39-54) E			
(21-38) F			
(1-20) G			
Not energy efficient - higher running costs			
England & Wales		EU Directive 2002/91/EC	

Environmental Impact (CO ₂) Rating		Current	Potential
Very environmentally friendly - lower CO ₂ emissions			
(92 plus) A			
(81-91) B			
(69-80) C			
(55-68) D			
(39-54) E			
(21-38) F			
(1-20) G			
Not environmentally friendly - higher CO ₂ emissions			
England & Wales		EU Directive 2002/91/EC	