



Tower Court, Saltmarshe Castle Park - HR7 4PN

Guide Price £220,000



hollywell
homes



Tower Court

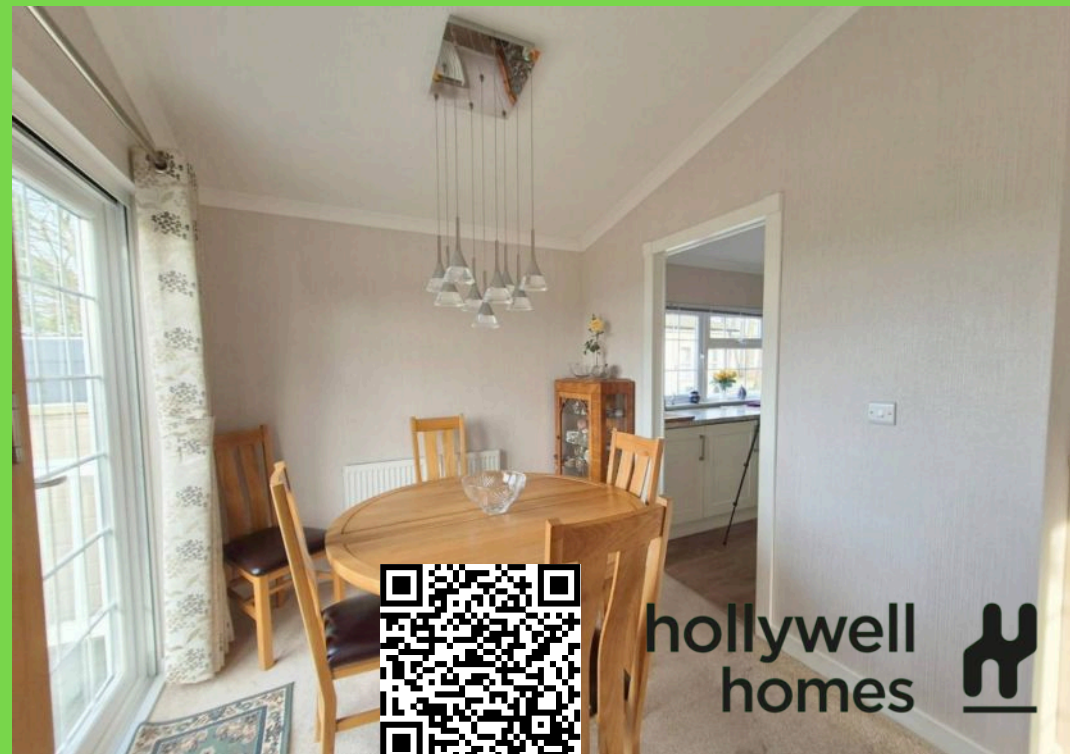
Saltmarshe Castle Park, Bromyard

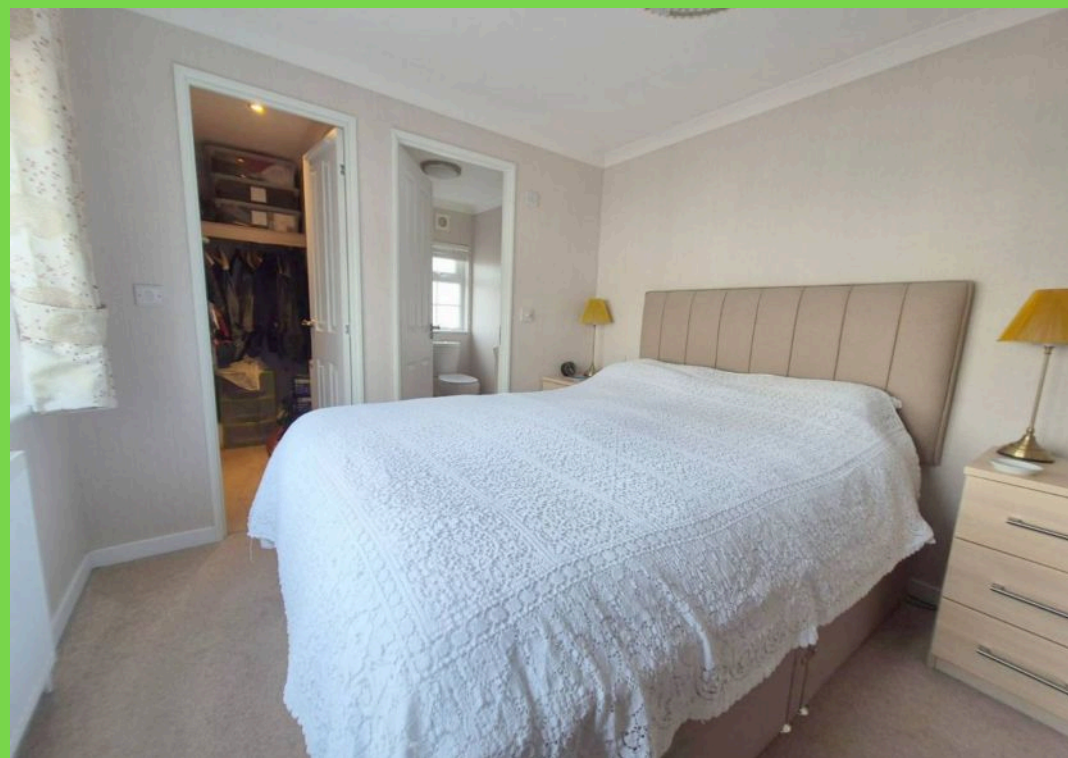
Hollywell Homes offer for sale this charming two-bedroom park home with picturesque countryside views. This two bedroom park home is beautifully presented with a unique design and build.
Council Tax band: A

Tenure: Freehold

- Two Bedroom Park Home
- Countryside Views
- Beautifully Presented
- Unique Design and Build
- Office
- Open Plan Living/Dining

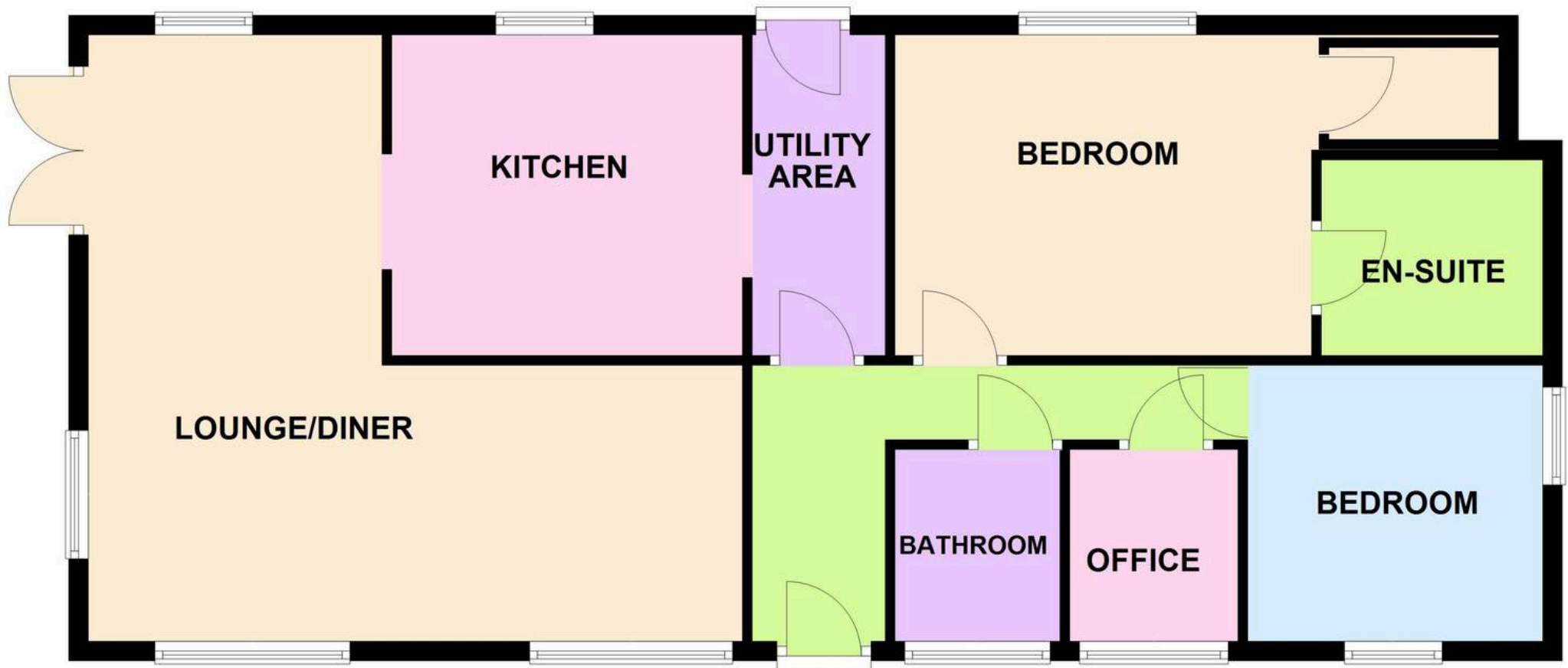








GROUND FLOOR



Entrance Hall

Kitchen

12' 2" x 7' 10" (3.71m x 2.40m)

Dining Area

11' 10" x 8' 1" (3.60m x 2.47m)

Living Room

17' 10" x 10' 8" (5.43m x 3.25m)

Bathroom

Office

5' 1" x 5' 11" (1.56m x 1.81m)

Bedroom

7' 9" x 6' 11" (2.37m x 2.10m)

Master Bedroom

11' 9" x 9' 3" (3.59m x 2.82m)

Walk in Closet

En-Suite





Hollywell Homes

14 St Johns, Worcester - WR2 5AH

01905 948848

info@hollywellhomes.co.uk

<http://www.hollywellhomes.co.uk/>



hollywell
homes 