



Wrendale Drive, Worcester - WR2 5FZ
£490,000



hollywell
homes



Wrendale Drive

Worcester, Worcester

Hollywell Homes are delighted to bring to market this four bedroom detached property overlooking the pond. This property really must be seen to be appreciated.
Council Tax band: F

Tenure: Freehold

EPC Energy Efficiency Rating: B

EPC Environmental Impact Rating: B

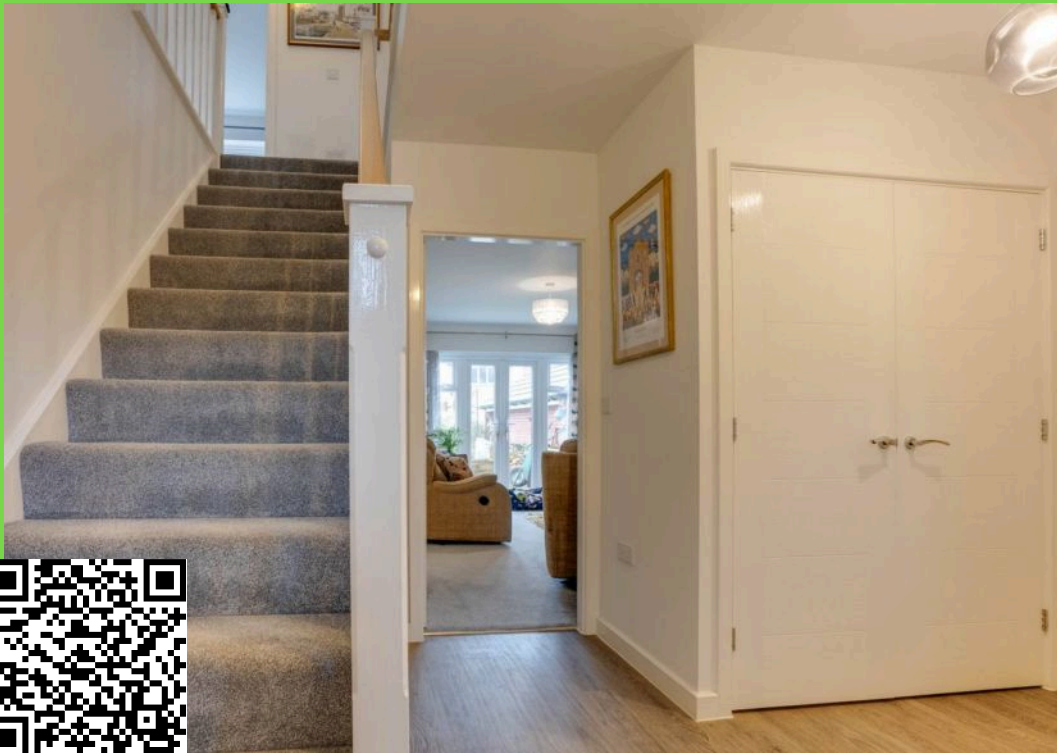
- Four Bedroom Detached Property
- Spacious Living Throughout
- Private cul-de-sac Location
- Office
- Garage and Driveway

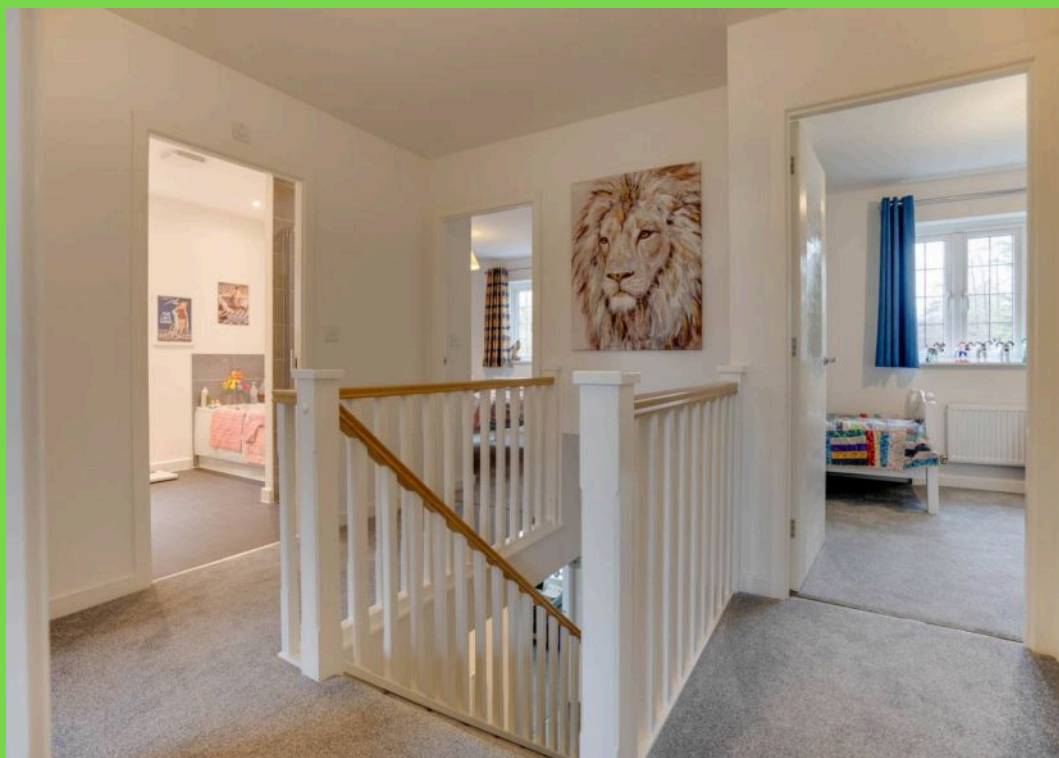




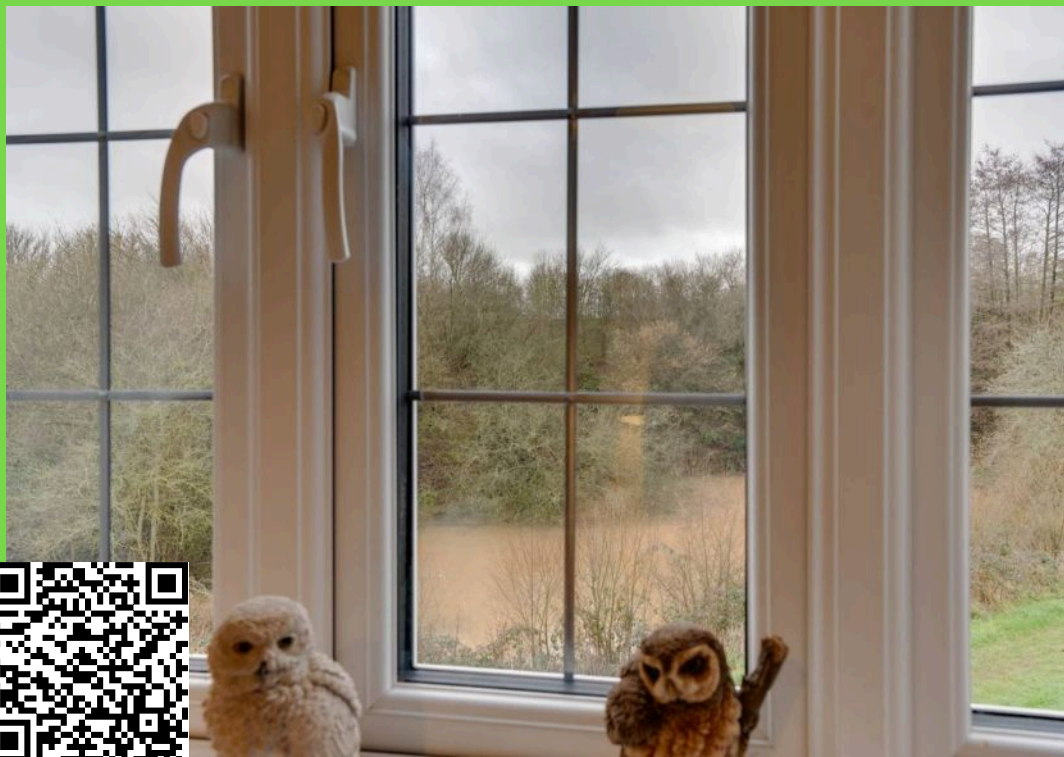
hollywell
homes





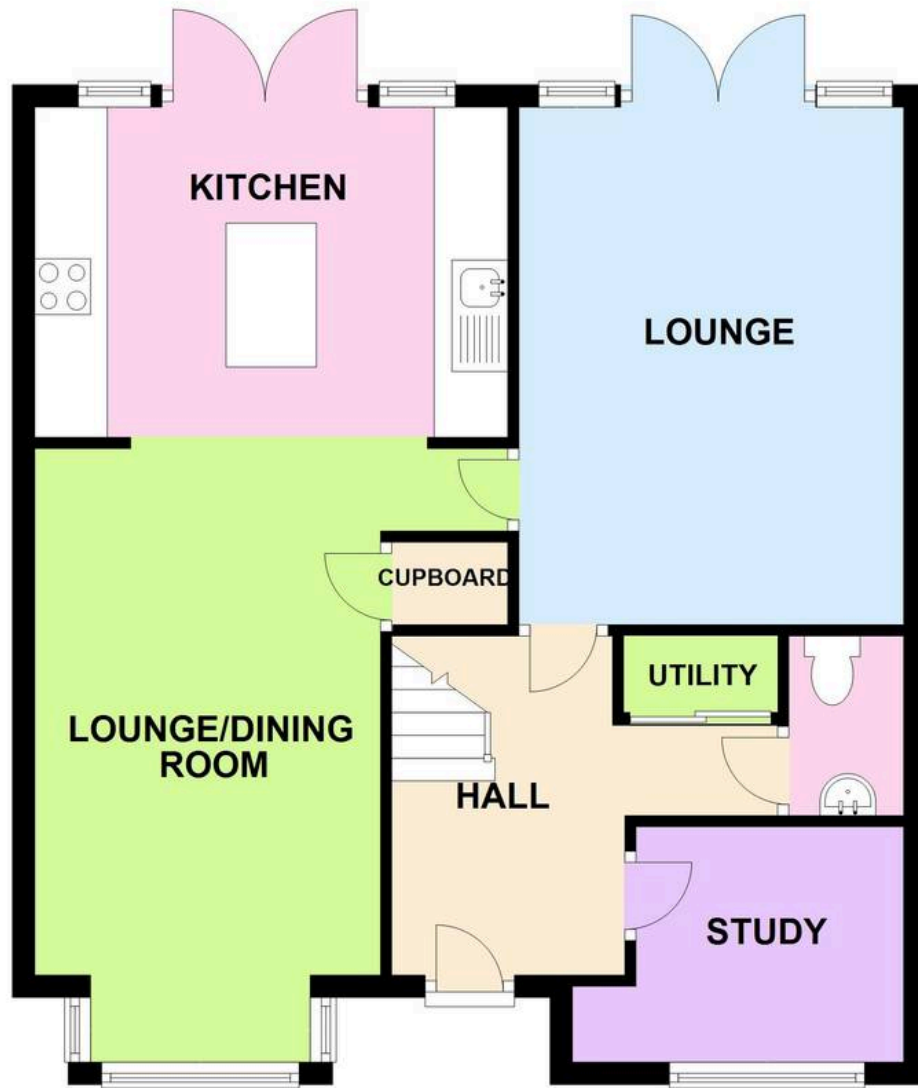




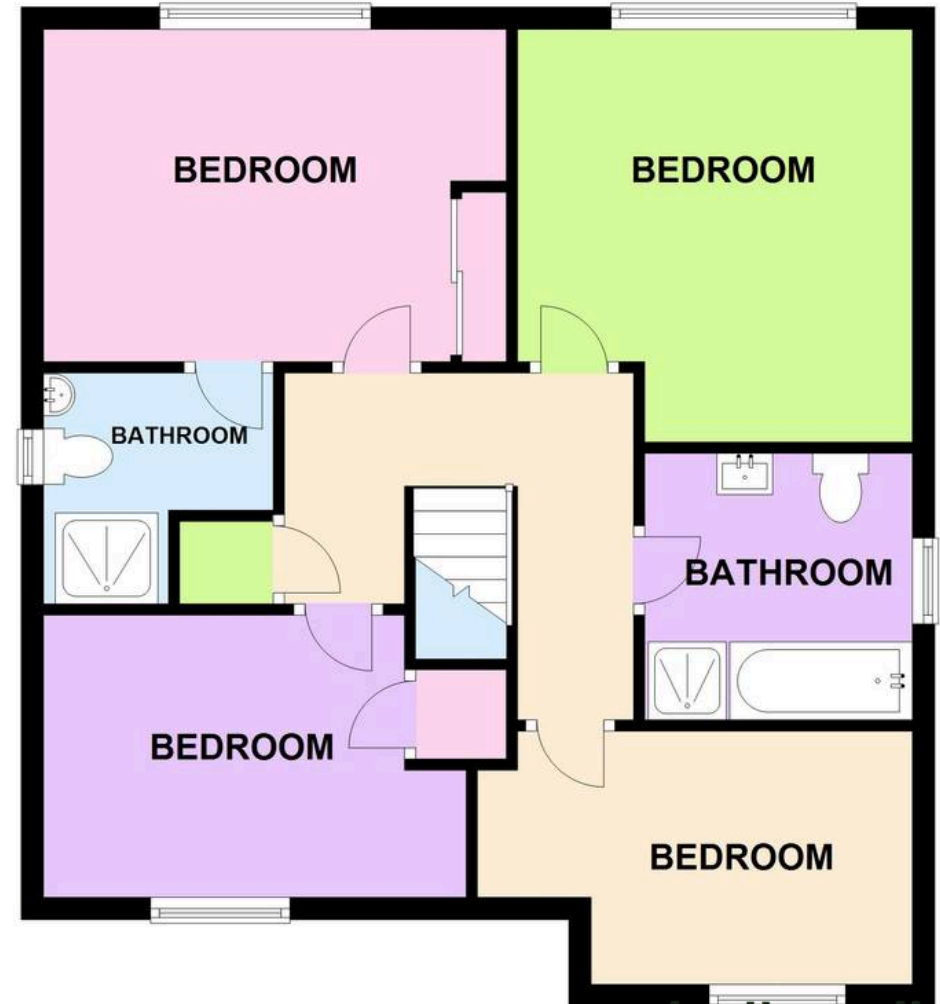




GROUND FLOOR



FIRST FLOOR



This plan is for illustrative purposes only, its details are approximate and no liability is taken for any discrepancies
Plan produced using PlanUp.

Entrance Hall

Downstairs WC

Utility Cupboard

Office

7' 11" x 6' 11" (2.41m x 2.10m)

Lounge

15' 3" x 11' 4" (4.65m x 3.45m)

Kitchen Area

13' 11" x 12' 6" (4.24m x 3.80m)

Lounge Diner

15' 3" x 10' 2" (4.65m x 3.10m)

Landing Area

Bedroom 1

14' 5" x 10' 2" (4.40m x 3.10m)

En - Suite

Bedroom 2

12' 1" x 11' 7" (3.68m x 3.53m)

Bedroom 3

11' 9" x 11' 7" (3.58m x 3.53m)

Bedroom 4

10' 1" x 8' 10" (3.07m x 2.70m)

Family Bathroom





Hollywell Homes

Unit 13 Canalside Office Complex, Lowesmoor Wharf - WR1 2RS

01905 948848

info@hollywellhomes.co.uk

<http://www.hollywellhomes.co.uk/>



hollywell
homes 