



Flat 14, Gheluvelt Court Brook Street, Worcester - WR1 1JB
£40,000



hollywell
homes



Gheluvelt Court Brook Street, Worcester

Being Sold via Secure Sale online bidding. Terms & Conditions apply. Starting Bid £40,000 Hollywell Homes bring to market this one bedroom ground floor retirement apartment.

Council Tax band: B

Tenure: Leasehold

EPC Energy Efficiency Rating: C

EPC Environmental Impact Rating: D

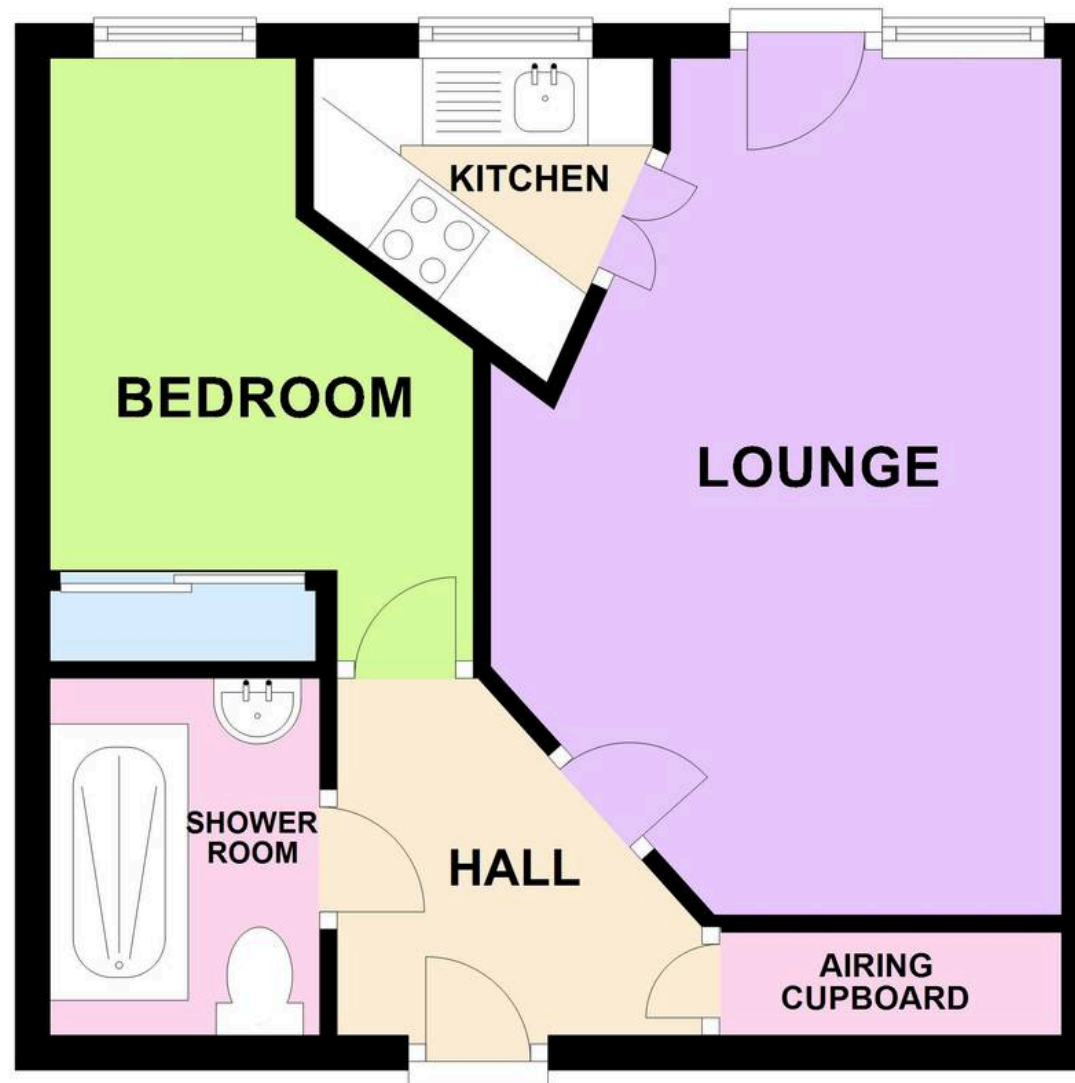
- Being Sold via Secure Sale online bidding *terms and conditions apply*
- Starting Bid £50,000
- One Bedroom Apartment
- Minimum age 60
- Water and Electricity Included
- 24 Hour Emergency Call System
- Lease - 125 years from 1995
- Immediate 'Exchange of Contracts' available







GROUND FLOOR



This plan is for illustrative purposes only, its details are approximate and no liability is taken for any discrepancies
Plan produced using PlanUp.

Lounge

17' 1" x 9' 10" (5.20m x 3.00m)

Bedroom

11' 10" x 9' 2" (3.60m x 2.80m)

Kitchen

7' 7" x 6' 7" (2.30m x 2.00m)

Bathroom

6' 7" x 4' 11" (2.00m x 1.50m)





Hollywell Homes

Unit 13 Canalside Office Complex, Lowesmoor Wharf - WR1 2RS

01905 948848

info@hollywellhomes.co.uk

<http://www.hollywellhomes.co.uk/>



hollywell
homes

