



Little Hereford Street, Bromyard - HR7 4DE

Guide Price £210,000



hollywell  
homes





# Little Hereford Street

Bromyard, Bromyard

Hollywell Homes bring to market this charming 2-bedroom end of terrace property. The property comes with two double bedrooms along with a generous living space throughout.

Council Tax band: B

Tenure: Freehold

EPC Energy Efficiency Rating: C

EPC Environmental Impact Rating: C

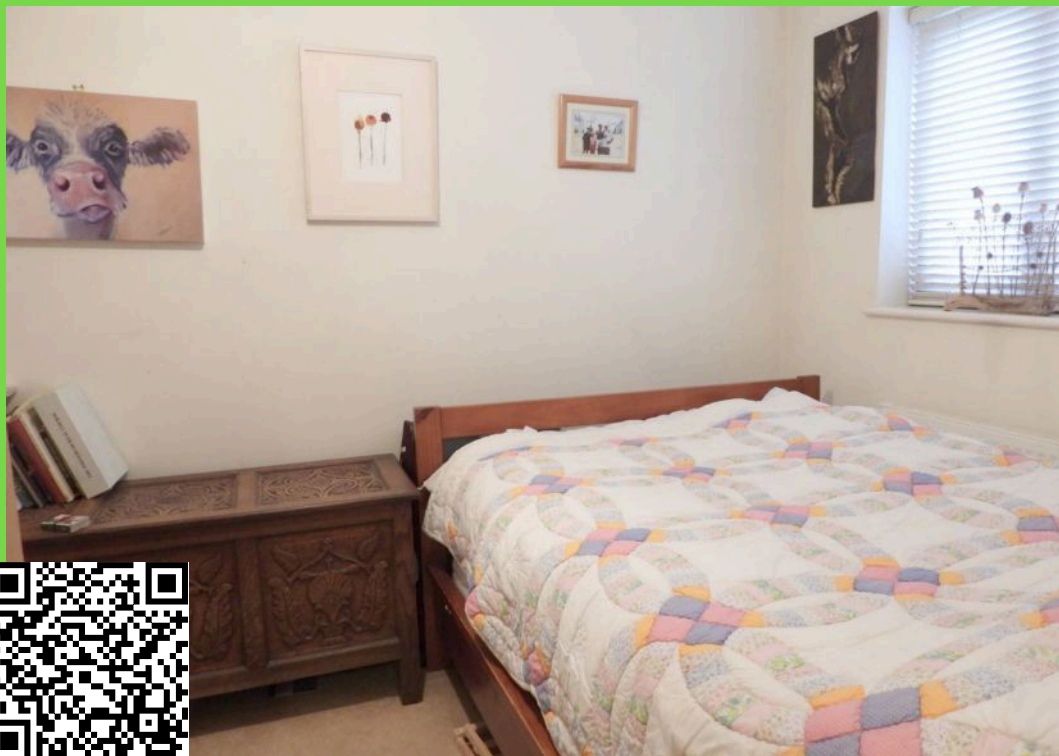
- Off Road Parking
- Rear Garden
- End of Terrace
- Kitchen/Diner
- Two Double Bedrooms





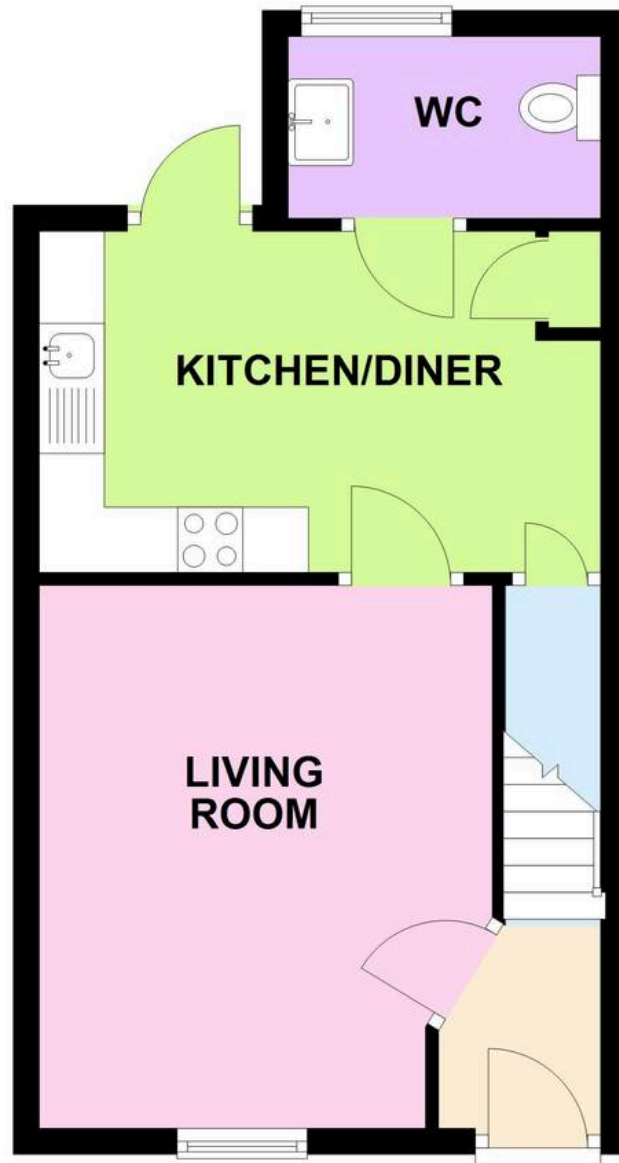




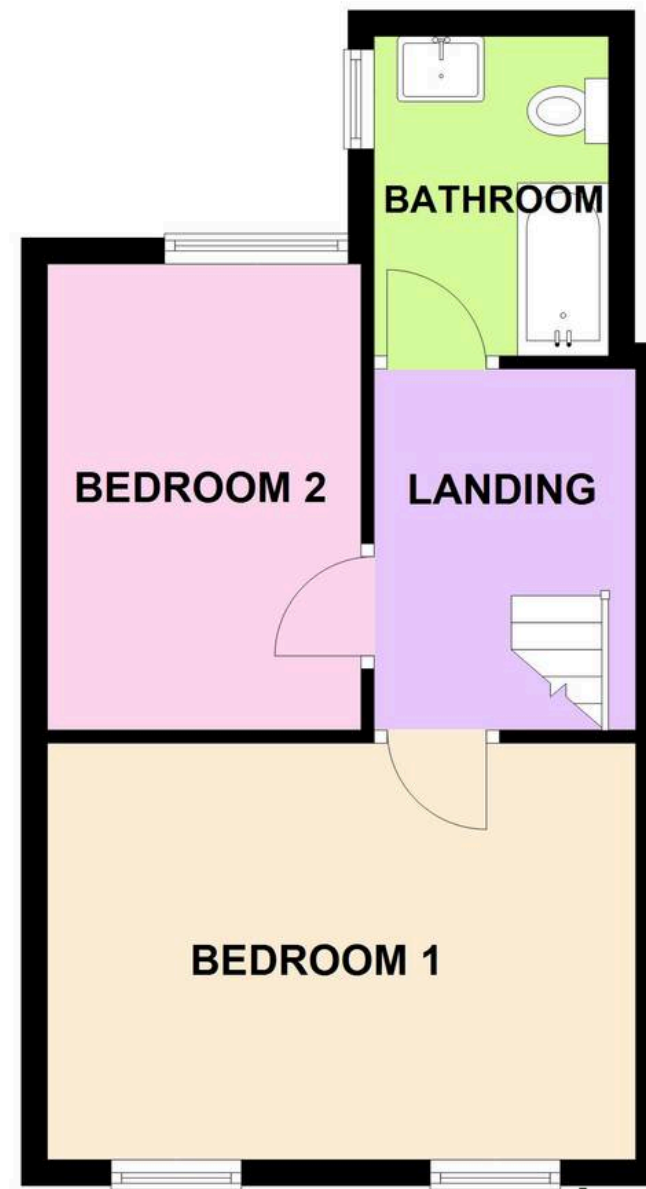




## GROUND FLOOR



## FIRST FLOOR



This plan is for illustrative purposes only, its details are approximate and no liability is taken for any discrepancies  
Plan produced using PlanUp.



**Entrance Hall**

**Living Room**

13' 8" x 11' 5" (4.17m x 3.48m)

**Kitchen/Diner**

14' 8" x 8' 7" (4.47m x 2.62m)

**Downstairs WC**

**Landing**

**Bedroom 1**

14' 10" x 10' 6" (4.52m x 3.20m)

**Bedroom 2**

11' 9" x 7' 11" (3.58m x 2.41m)

**Family Bathroom**



hollywell  
homes 





## Hollywell Homes

Unit 13 Canalside Office Complex, Lowesmoor Wharf - WR1 2RS

01905 948848

[info@hollywellhomes.co.uk](mailto:info@hollywellhomes.co.uk)

<http://www.hollywellhomes.co.uk/>



hollywell  
homes 