



Yew Tree Cottage, Norton - HR7 4PF

Guide Price £425,000



hollywell
homes



Yew Tree Cottage

Norton, Bromyard

Hollywell Homes are proud to bring to market this well presented property in the heart of Bromyard Downs. Nestled in a tranquil countryside setting, this charming 2-bedroom cottage comes boasting full of character with its original features and unique layout. The property itself also is offered along side the 2.7-acre plot. The interior of the cottage showcases a cosy living space, a well-equipped kitchen, and two generously proportioned bedrooms, providing comfort and charm in equal measure. With a private driveway leading up to the property showing the property and its land in all its beauty.

This property really must be seen to be appreciated.

The property viewings are strictly via Hollywell Homes, so please contact the office today to avoid disappointment.

- 2 Bedroom Cottage
- Original Features
- Countryside Setting
- Driveway
- Unique Layout
- Two Generous Size Bedrooms
- 2.7 Acres Plot

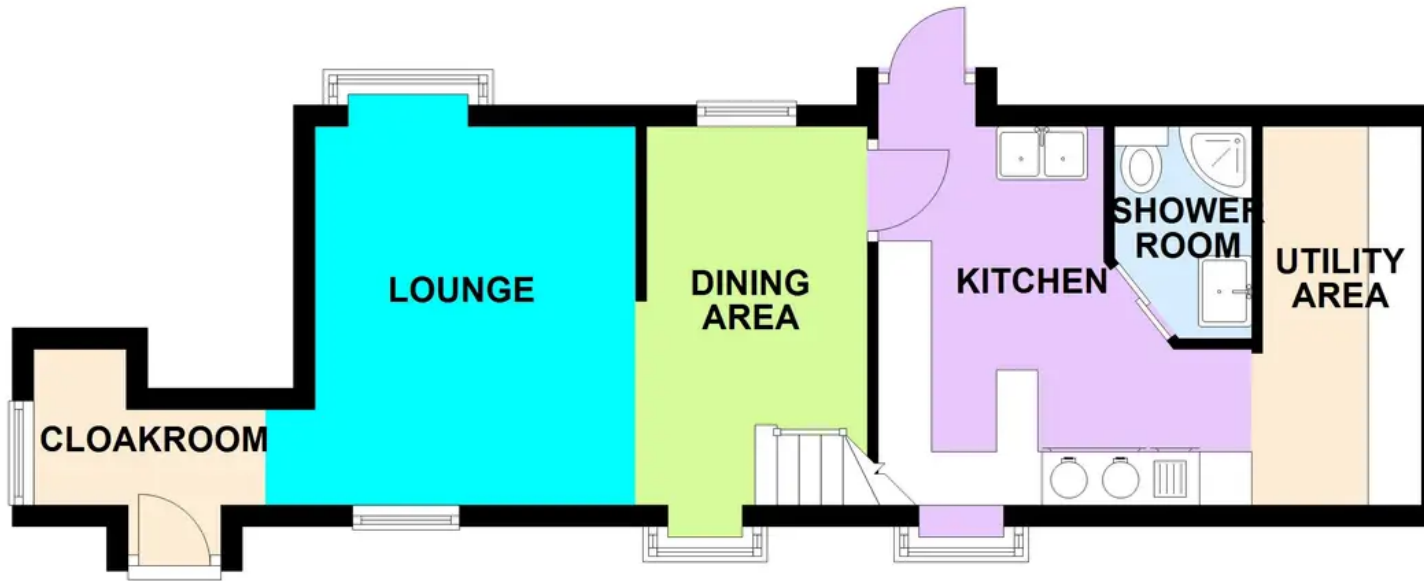


hollywell
homes

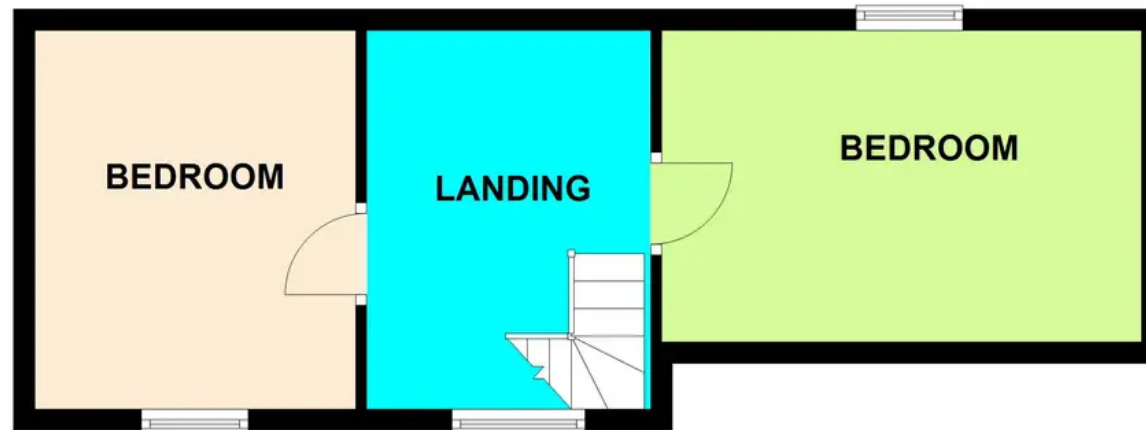




GROUND FLOOR



FIRST FLOOR



This plan is for illustrative purposes only, its details are approximate and no liability is taken for any discrepancies
Plan produced using PlanUp.



Hollywell Homes

Unit 13 Canalside Office Complex, Lowesmoor Wharf - WR1 2RS

01905 948848

info@hollywellhomes.co.uk

<http://www.hollywellhomes.co.uk/>



hollywell
homes 