

Falstaff Road, Shirley, Solihull, B90 2AG

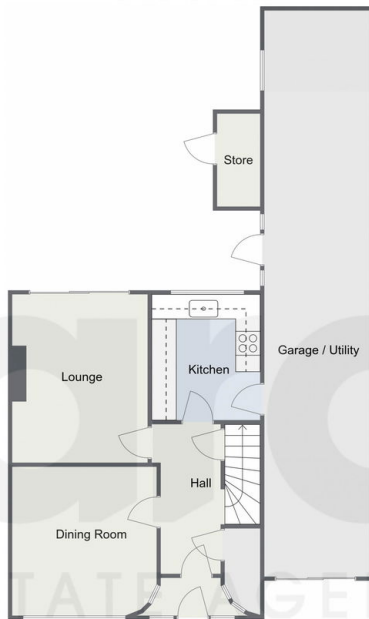
£400,000

3 1 2



-
-
-
-
-

Falstaff Road, Shirley
Ground Floor



First Floor



Total Area Approx
132.1 Sq M
1421.91 Sq Ft

For illustrative purposes only. Decorative finishes, fixtures & fittings do not represent the current state of the property. Measurements are approximate & not to scale. Floor Plans made using RoomSketcher.

This charming three-bedroom semi-detached home is perfectly situated in the heart of Shirley, offering convenience with close proximity to transport links and local amenities. Ideal for families or those seeking easy access to shops, schools, and public transport, the property also benefits from off-road parking and a well-maintained rear garden.