



Stort Tower | Harlow | | CM20 2NX

Asking Price £150,000



Stort Tower | Harlow

| CM20 2NX

Asking Price £150,000

A TWO DOUBLE BEDROOM FIRST FLOOR FLAT with private balcony. The property benefits from a spacious entrance hall with a large lounge/diner with direct access onto the private balcony, fitted kitchen with a range of wall and base units, two generously sized double bedrooms and bathroom. This property is being sold with no onward chain. Stort Tower benefits from elevator access and secure entry intercom. Viewings highly advised.

- Two Double Bedroom Flat
- No Onward Chain
- Council Tax Band: B
- First Floor
- Private Balcony
- EPC Rating: C

Stort Tower

Stort Tower is an ex-local authority tower block apartment building comprising of 10 floors. There is a secure entry intercom phone and passenger elevator. Surrounding the building there are communal greens.

Entrance Hall

Composite door to communal landing. Two built-in storage cupboards. Radiator to wall. Internal doors to lounge diner, bedrooms and bathroom. Secure entry intercom phone to wall.





Lounge/Diner

10'00 x 23'00 (3.05m x 7.01m)

UPVC double glazed windows with door leading to balcony. Two radiators to walls. Internal door to hallway, doorway to kitchen.

Kitchen

9'00 x 4'10 (2.74m x 1.47m)

Fitted kitchen with a range of wall and base units benefitting from space for freestanding oven/hob, sink and drainer and UPVC double glazed window to wall.

Bedroom One

10'10 x 12'10 (3.30m x 3.91m)

Large double bedroom featuring UPVC double glazed window, radiator to wall. Internal door to hallway.

Bedroom Two

9'00 x 12'10 (2.74m x 3.91m)

Double bedroom benefitting from UPVC double glazed window, radiator to wall. Internal door to hallway.

Bathroom

6'00 x 6'09 (1.83m x 2.06m)

Family bathroom offering bath with shower, toilet and sink. UPVC double glazed window and radiator to wall.

Lease Information

The below figures have been provided to us by the vendors:

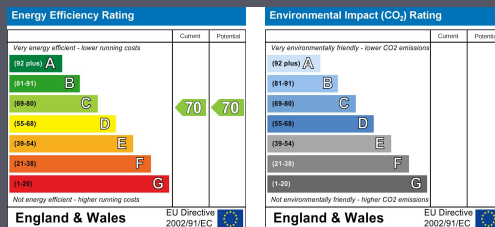
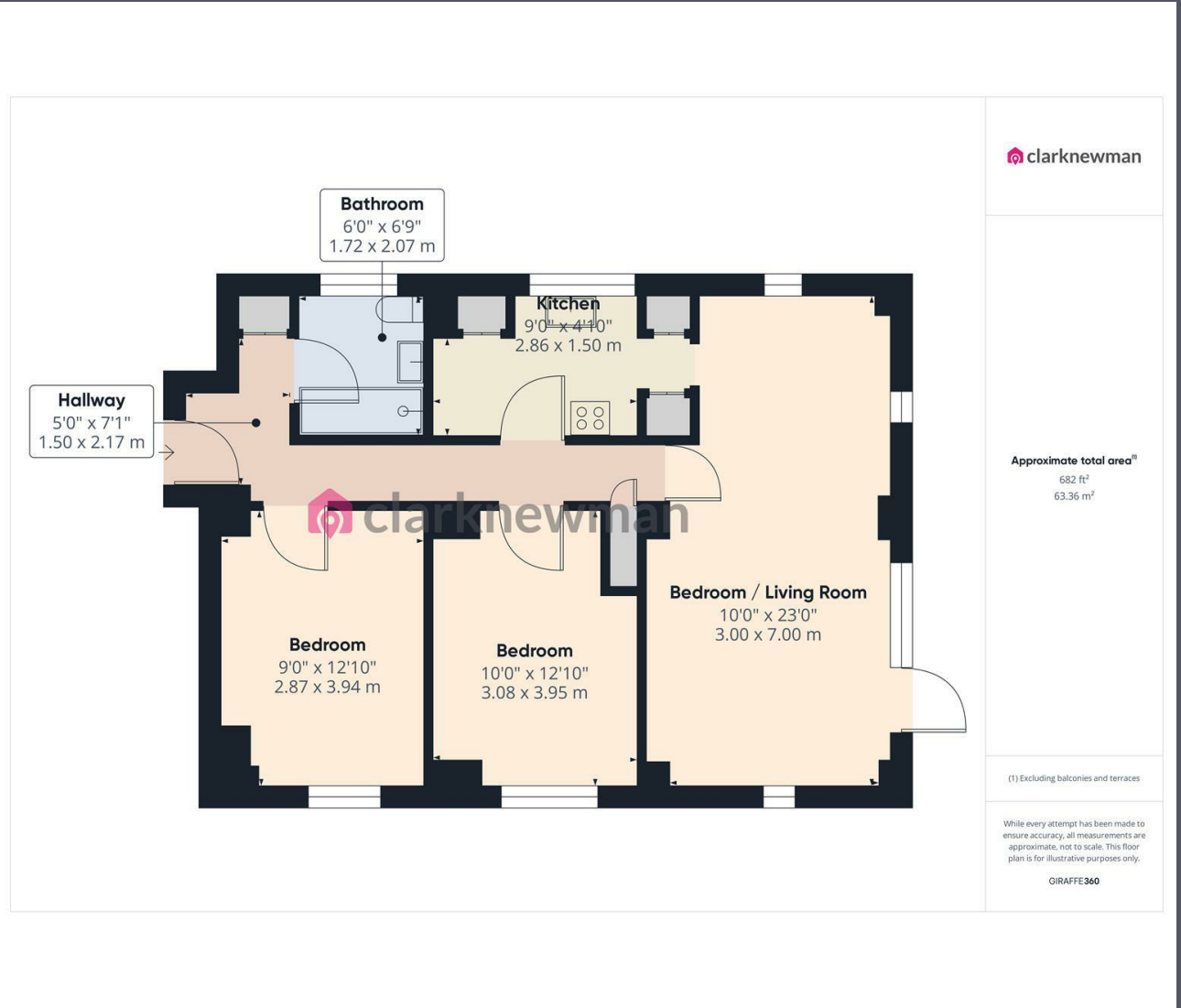
Service Charges: £2,562.50 per annum / £213 per month

Ground Rent: £10 per annum

Lease: 84 years remaining (approx)

Local Area

Stort Tower is located within Great Plumtree off Mowbray Road, adjacent to Howard Way and opposite Aldi Supermarket at The Stow shopping centre. The Stow shopping centre also benefits from local amenities including barbers, convenience stores, dentists, dry cleaners, restaurants, doctors surgery and much more. Stort Tower is also opposite Our Lady of Fatima R C Church. There are two primary schools/academies nearby, St Albans & Tany's Dell, as well as two secondary schools/academies, Burnt Mill & Mark Hall. Harlow Town Train Station is approximately 1 mile away, as is Harlow Town Centre.



Equity House
4-6 Market Street
Harlow
Essex
CM17 0AH
01279 400444
hello@clarknewman.co.uk