



Gladwin Way | Harlow | Essex | CM20 1AS

£1,450 PCM

 clarknewman

Gladwin Way | Harlow
Essex | CM20 1AS
£1,450 PCM

A SPACIOUS TWO BEDROOM GROUND FLOOR FLAT with en-suite shower room. The property benefits from a fitted kitchen with built in appliances, full UPVC double glazed windows and private parking. Located within a few minutes of Harlow Town Train Station & Harlow Town Centre. The property is available unfurnished late May. This is a non-smoking property and the landlord does not allow pets.

- Two Bedrooms
- En-Suite Shower Room
- Council Tax Band: D
- Ground Floor Flat
- Available Late May
- EPC Rating: B

Entrance Hall
17'5" x 3'9" (5.33 x 1.15)

Bedroom One
12'4" x 9'6" (3.78 x 2.92)

Ensuite
5'6" x 7'2" (1.69 x 2.20)

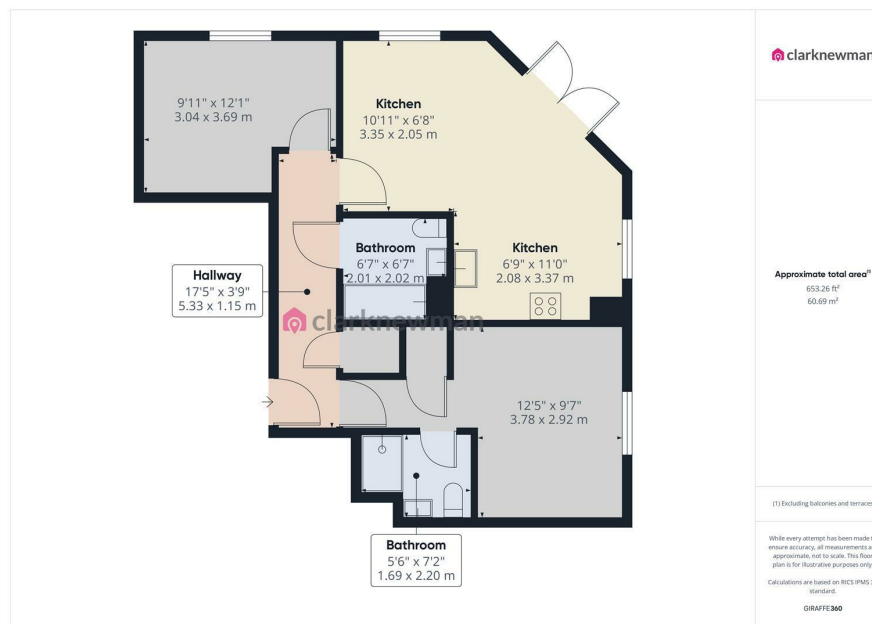
Bedroom Two
9'11" x 12'1" (3.04 x 3.69)

Bathroom
6'7" x 6'7" (2.01 x 2.02)

Living Room
10'11" x 6'8" (3.35 x 2.05)

Kitchen
6'9" x 11'0" (2.08 x 3.37)

Local Area



Energy Efficiency Rating		
	Current	Potential
Very energy efficient - lower running costs		
(92 plus) A		
(81-91) B	81	81
(69-80) C		
(55-68) D		
(39-54) E		
(21-38) F		
(1-20) G		
Not energy efficient - higher running costs		
England & Wales	EU Directive 2002/91/EC	

Equity House
4-6 Market Street
Harlow
Essex
CM17 0AH
01279 400444
hello@clarknewman.co.uk
www.clarknewman.co.uk