



Carters Mead | | Harlow | CM17 9ET

Asking Price £140,000



Carters Mead | Harlow | CM17 9ET

Asking Price £140,000

A VACANT ONE DOUBLE BEDROOM GROUND FLOOR APARTMENT benefitting from recent redecoration. The property comprises of an entrance hall, large lounge with ample living space, modern fitted kitchen with a range of wall and base units as well as space for freestanding appliances, a double bedroom and family bathroom suite. This property is being sold with no onward chain and viewings are highly recommended.

- One Double Bedroom
- No Onward Chain
- Council Tax Band: B
- Ground Floor Flat
- Ideal Location
- EPC Rating: C

Entrance Hall

Composite door to communal stairwell. UPVC double glazed window. Radiator to wall. Internal doors to living room, bedroom, bathroom and storage cupboard.

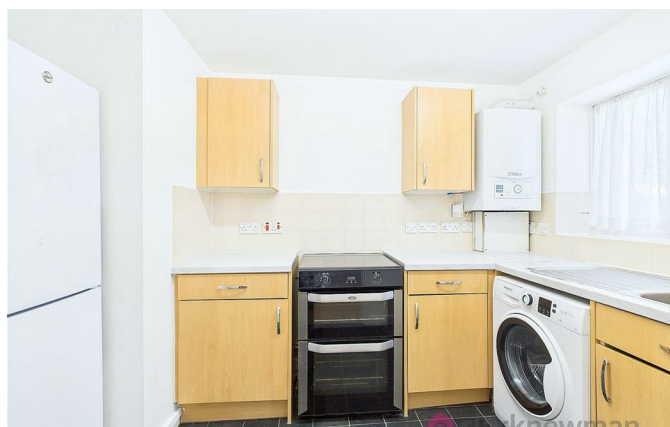
Living Room

10'10" x 11'10" (3.30m x 3.61m)

UPVC double glazed window, radiator to wall. Internal door to hallway, doorway to kitchen.



 clarknewman



 clarknewman



Kitchen

10'7" x 6'8" (3.23m x 2.03m)

UPVC double glazed window. Fitted kitchen with a range of wall and base units, laminate worktops and stainless steel sink and drainer. Gas boiler to wall. Space for freestanding cooker, fridge freezer and washing machine. Doorway to living room.

Bedroom

10'07" x 10'0" (3.23m x 3.05m)

UPVC double glazed window, radiator to wall. Built-in cupboard/wardrobe. Internal door to hallway.

Bathroom

7'5" x 5'9" (2.26m x 1.75m)

UPVC double glazed window, radiator to wall. White three piece suite comprising of WC, pedestal sink and bath with glass screen and shower above. Internal door to hallway.

Lease Information

The below figures have been provided to us by the vendors:

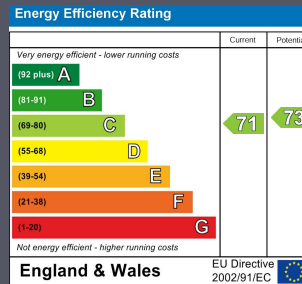
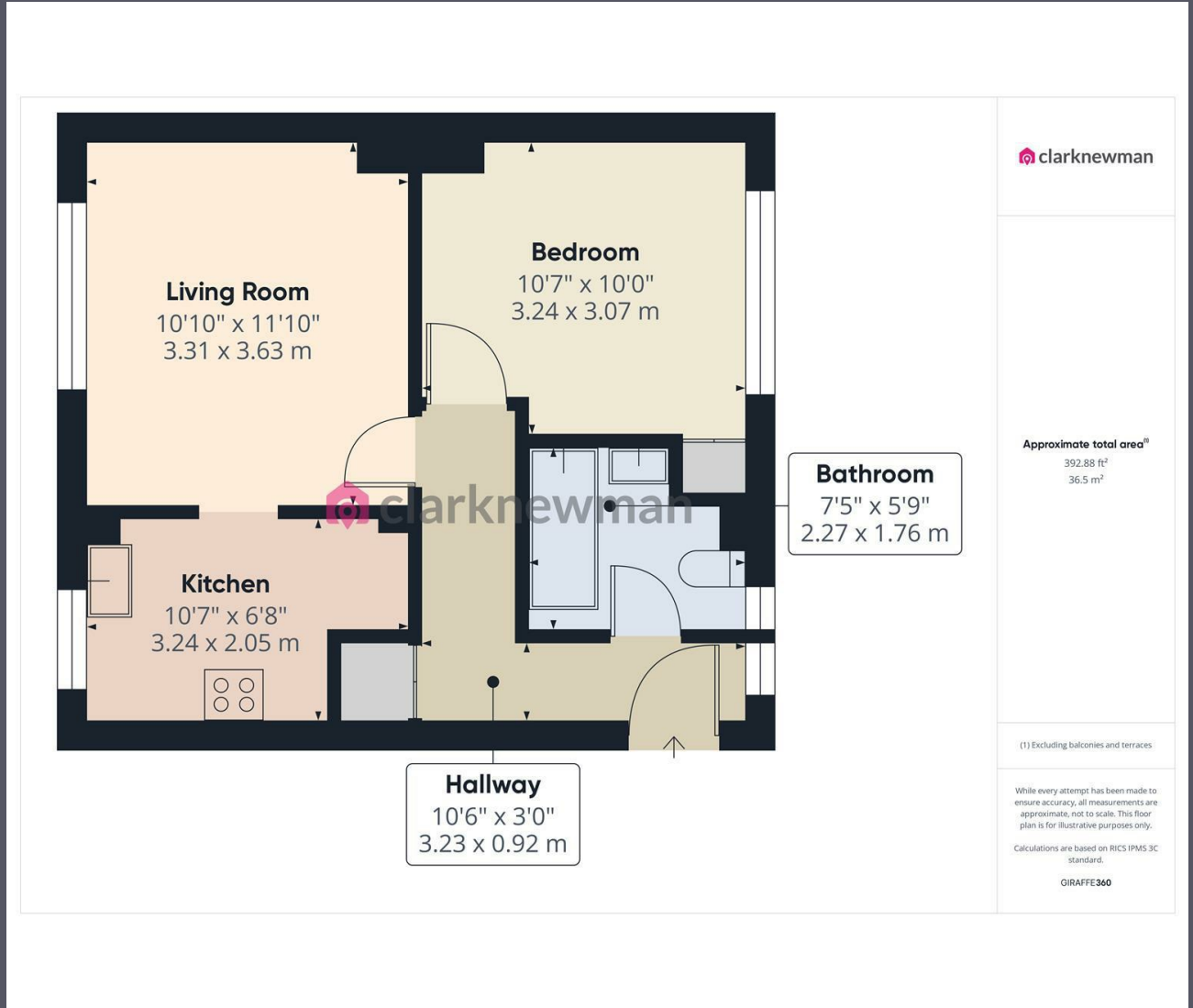
Service Charges: £116 per month

Ground Rent: £10 per year

Lease: 90 years remaining

Local Area

Carters Mead is located in the popular area of Potter Street and is situated within close proximity to local amenities and schooling. Potter Street is located close to the Harlow M11 Junction.



Equity House
4-6 Market Street
Harlow
Essex
CM17 0AH
01279 400444
hello@clarknewman.co.uk
www.clarknewman.co.uk