



Alpha House, TW12

£1,650,000

Dexters are delighted to introduce for sale the freehold of a fully let "turnkey" investment opportunity located in Hampton Hill, TW12.

Built in 2023, the purpose built three-storey building features 5nos. one-bedroom self-contained apartments. Each apartment is presented in good internal condition and features a private balcony. The one-bedroom apartments are located on the ground and first floor whilst the two-bedroom apartment (the "penthouse") occupies the whole of the second floor and includes a private roof terrace. The apartments are currently generating a Gross Income of circa £90,000 per annum.

Location

Situated within the London Borough of Richmond upon Thames the site is located within the residential area of Hampton Hill, and is within 150 metres of Hampton Hill village centre with its plethora of shops, restaurants, cafés and traditional village public houses, including Little Waitrose, Sainsbury's Local, Tesco's Express, Costa Coffee, Bonjorno Café, Robson's Butcher & Deli and the La Familia Restaurant as well as the Hampton Hill Theatre.

Bushy Park, the second largest of the Royal Parks famed for its mix of waterways, gardens and grassland and roaming herds of red and fallow deer can be accessed within 220 metres.

There are a number of public and private schools within close proximity including Clarence House Preparatory School, Carlisle Infant School, Hampton Hill Junior School, The Lady Eleanor Holles Junior School and Hampton School. Fulwell railway station is within 600 metres and operates a direct service to London Waterloo via Kingston and Clapham Junction, access to the A316 is within 2.02km providing links to the M3 and M25, Heathrow Airport is within 7 km.

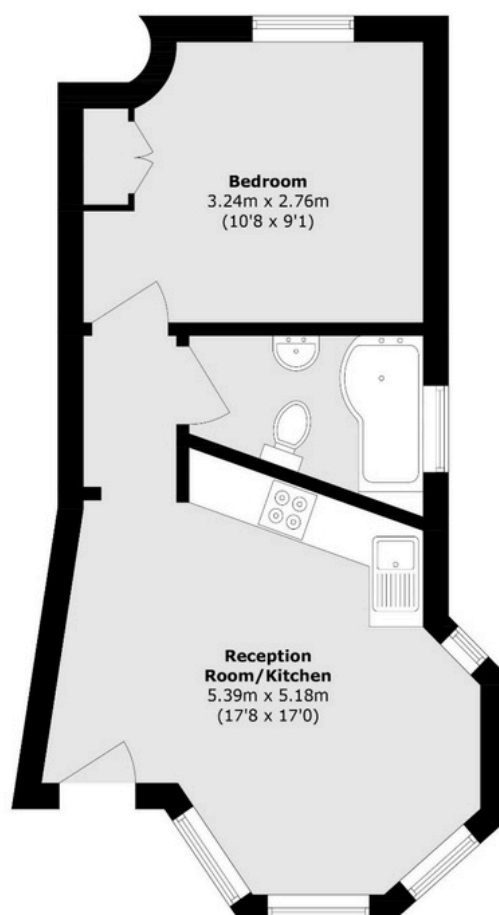


Features

- Fully let "turnkey" investment opportunity
- Unencumbered freehold
- 5nos. one-bedroom self-contained apartments
- Currently generating a Gross Income of circa £90,000 per annum
- Located in Hampton Hill

Alpha House, 17 Hampton Road, Hampton Hill, Middlesex TW12 1JN

Flat 1



Total area (approx.): 39.0 sq. m (419.7 sq. ft)



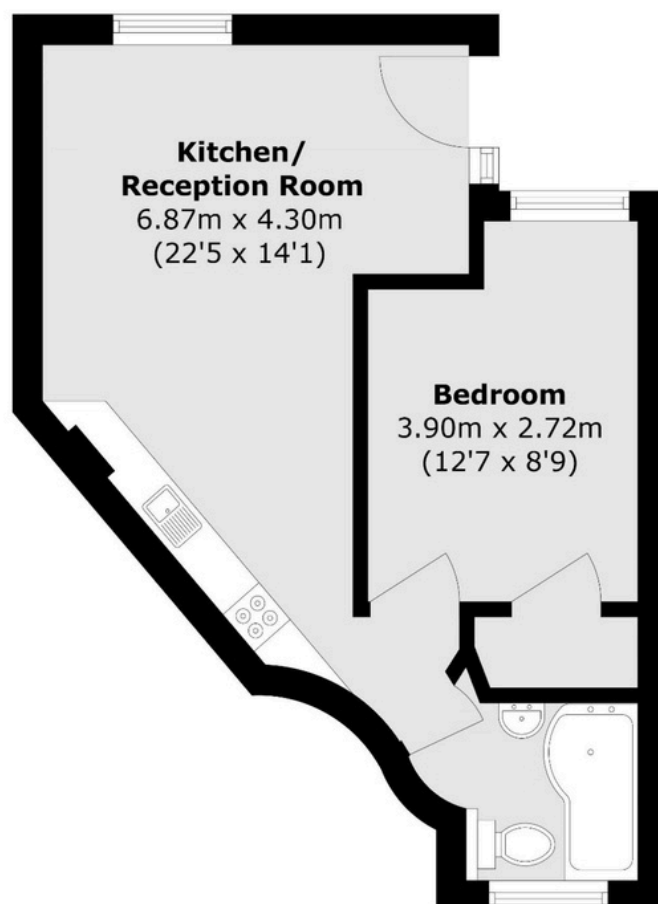
Registered office: Mayfair Showroom, 66 Grosvenor Street, London, W1K 3JL.
Dexters London Limited, Company Registration Number 04160511

Property sales, lettings and management Development and investment advisors, Specialist residential Chartered Surveyors

dexters.co.uk

Alpha House, 17 Hampton Road, Hampton Hill, Middlesex TW12 1JN

Flat 2



Total area (approx.): 35.6 sq. m (383.1 sq. ft)



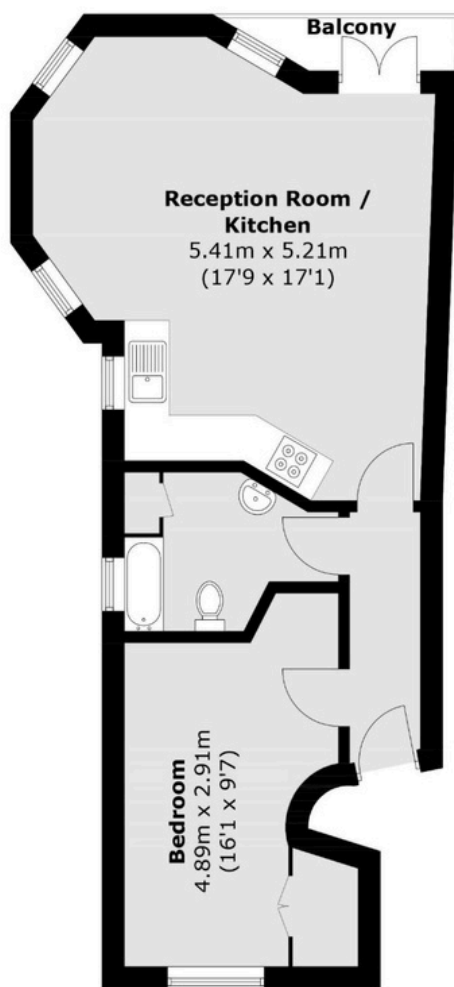
Registered office: Mayfair Showroom, 66 Grosvenor Street, London, W1K 3JL.
Dexters London Limited, Company Registration Number 04160511

Property sales, lettings and management. Development and investment advisors. Specialist residential Chartered Surveyors

dexters.co.uk

Alpha House, 17 Hampton Road, Hampton Hill, Middlesex TW12 1JN

Flat 3



First Floor

Total area (approx.): 47.6 sq. m (512.4 sq. ft)
Balcony area: 1.8 sq. m (19.4 sq. ft)



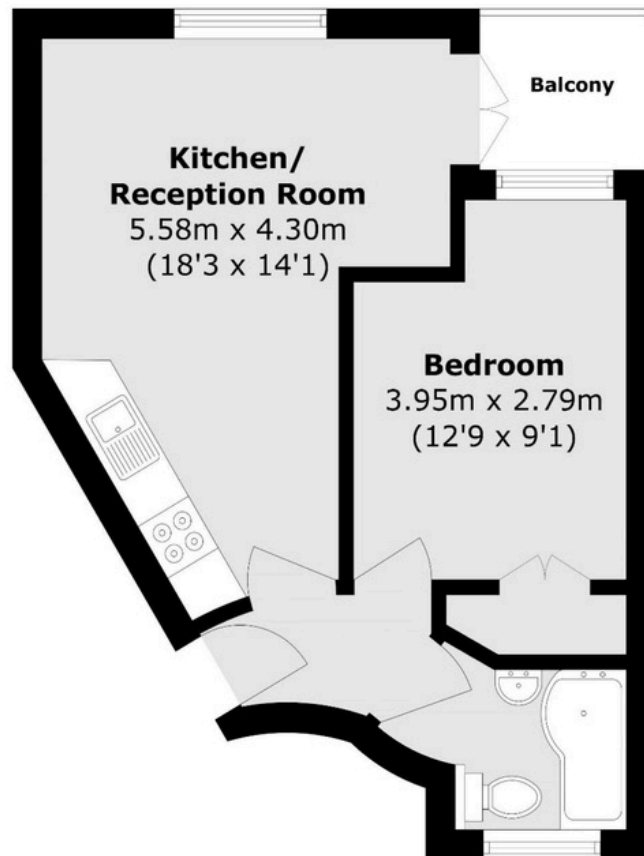
Property sales, lettings and management Development and investment advisors, Specialist residential Chartered Surveyors

Registered office: Mayfair Showroom, 66 Grosvenor Street, London, W1K 3JL.
Dexters London Limited, Company Registration Number 04160511

dexters.co.uk

Alpha House, 17 Hampton Road, Hampton Hill, Middlesex TW12 1JN

Flat 4



Total area (approx.): 36.1 sq. m (388.5 sq. ft)
Balcony area (approx.): 2.6 sq. m (27.9 sq. ft)



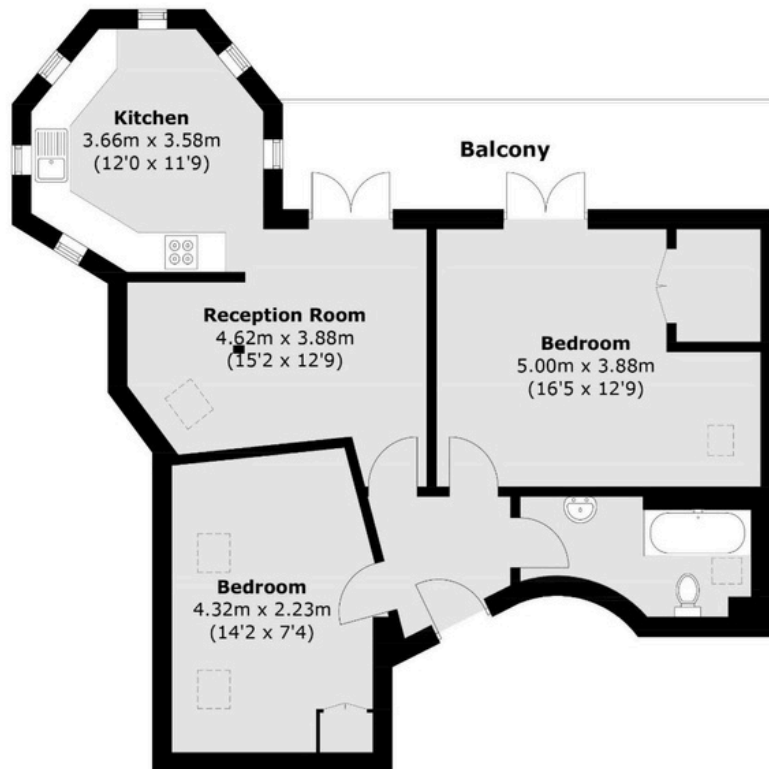
Registered office: Mayfair Showroom, 66 Grosvenor Street, London, W1K 3JL.
Dexters London Limited, Company Registration Number 04160511

Property sales, lettings and management | Development and investment advisors | Specialist residential Chartered Surveyors

dexters.co.uk

Alpha House, 17 Hampton Road, Hampton Hill, Middlesex TW12 1JN

Flat 5



Total area (approx.): 70.5 sq. m (758.9 sq. ft)
Balcony area: 12.2 sq. m (131.3 sq. ft)