



Garsington Mews, SE4
£2,250,000

Dexters



Garsington Mews, SE4

Dexters are delighted to introduce for sale Woodstone House. Located within the Brockley Conservation Area the property is a 'hidden gem' offering privacy and seclusion. Featuring a former 19th century coach house that has been sympathetically converted by the current owners, creating a three bedroomed, two-storey dwelling with its own garage and secluded courtyard garden. In addition, the freehold contains a row of 9nos single garages and a separate garage block featuring 2nos single garages with redevelopment potential, subject to securing the necessary planning consents.

Situated within the Brockley Conservation Area with the London Borough of Lewisham within Travelcard Zone 2, Brockley railway station is within 500 metres providing direct trains between London Bridge and Brighton via National Rail (Southern) and between West Croydon and Highbury & Islington via the London Overground (Windrush line). The open green space of Hilly Fields public park is within 275 metres, whilst Brockley centre is within 475 metres featuring a plethora of local shops, cafés and restaurants.

Features

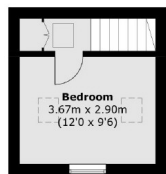
- Development opportunity
- Unencumbered Freehold
- Three-bedroom house
- 11 nos. garages
- Additional double garage block



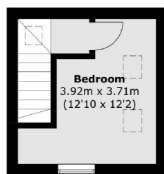




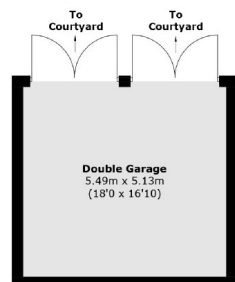
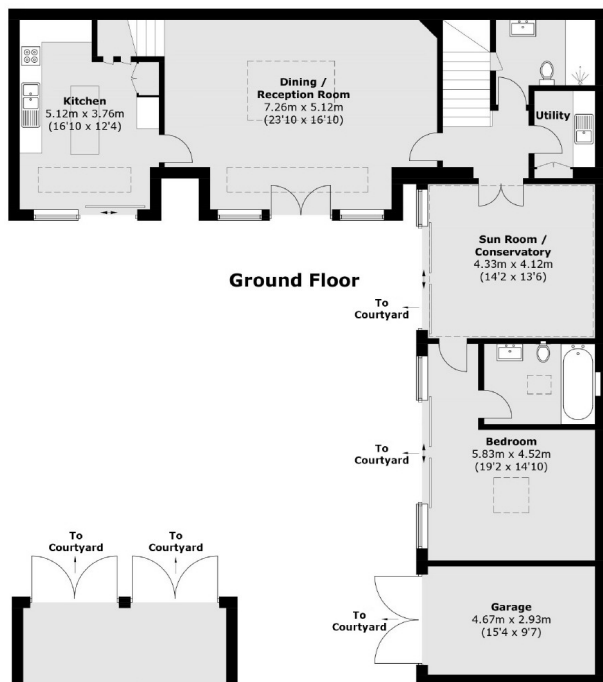
Garsington Mews, London, SE4



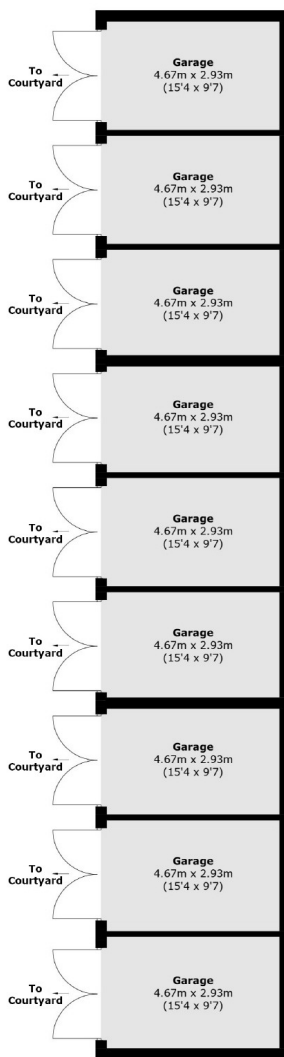
First Floor



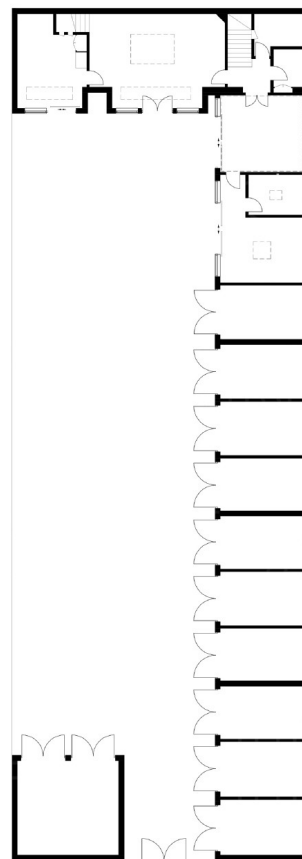
First Floor



(Not Shown In Actual
Location / Orientation)



(Not Shown In Actual
Location / Orientation)



Site Plan

Total House area (approx.): 149.7 sq. m (1,611.3 sq. ft)

Garage : 13.6 sq. m (146.4 sq. ft)

Garage Block : 126.5 sq. m (1,361.6 sq. ft)

Double Garage : 28.9 sq. m (311.1 sq. ft)

Total: 318.7 sq. m (3,430.4 sq. ft)