



87 Weavers Crofts, Melksham, SN12 8BW

£1,000 Per Month



- Two bedroom end of terrace home
- Long term let preferred
- Allocated parking
- Enclosed rear garden
- Council Tax - B (Wiltshire Council)
- EPC - C (70)

THE PROPERTY

Welcome to 87 Weavers Croft, Melksham. A two bedroom end of terrace home available for a long term let. The property has also recently benefitted to a refresh.

The ground floor accommodation comprises entrance hall, cloakroom, storage cupboard, kitchen and lounge with door onto the rear garden. The first floor accommodation comprises landing, two bedrooms, one with fitted cupboard and bathroom.

The property further benefits from gas central heating, double glazing, allocated parking for one car and an enclosed rear garden with gated side access.

The landlord would prefer a longer term let. Pets are not considered.

All room measurements are approx

Kitchen: 2.46m x 2.02m

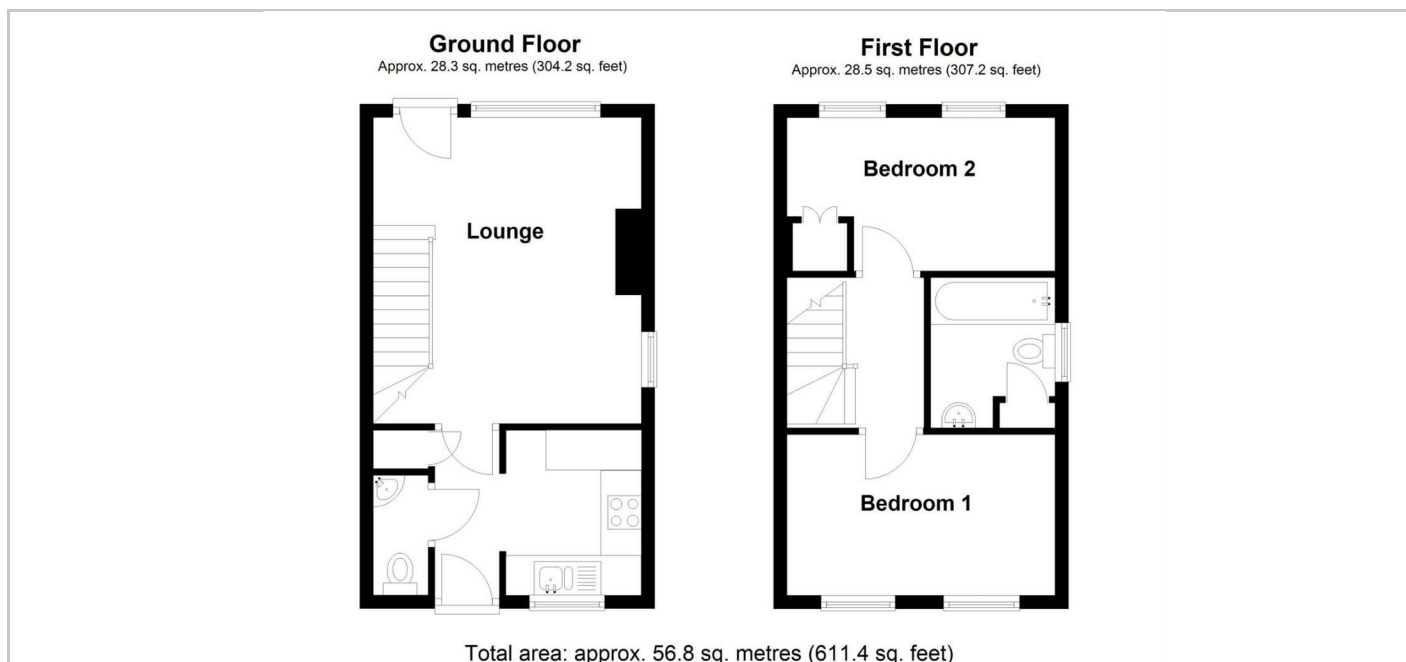
Lounge: 4.57m x 3.87m

Bedroom One: 3.94m x 2.48m

Bedroom Two: 3.94m x 2.29m

Bathroom: 2.24m x 1.86m

SITUATION



Directions

Office 4 Stockley Farm, Stockley, Wiltshire, SN11 0NT

Tel: 01225 839050 Email: hello@blueleafproperty.co.uk <https://www.blueleafproperty.co.uk>