



TO LET

79 Speedwell Close, Melksham, Wiltshire, SN12 7TE

£1,600 PCM



- Four bedroom detached family home
- Double garage and driveway parking
- Long term let preferred
- Enclosed rear garden
- Council Tax - E (Wiltshire Council)
- EPC - C (70)

Discover Melksham: A Charming Wiltshire Town with Excellent Connectivity

Nestled along the banks of the River Avon, Melksham is a market town that blends historical charm with modern conveniences. It offers a welcoming community atmosphere complemented by a range of amenities.

Local Amenities and Lifestyle

Melksham boasts a high street filled with independent shops, cafes, and traditional pubs. For leisure and recreation, the town offers several parks and green spaces, including King George V Playing Field, which features a playground, skate park and is home to Melksham Parkrun. The nearby Melksham Community Campus enhances the town's leisure offerings with swimming pool, sports hall, gym and cafe.

THE PROPERTY

Welcome to 79 Speedwell Close, Melksham, a spacious four bedroom detached house for let with double garage and driveway parking.

The ground floor accommodation comprises entrance hall, lounge, conservatory, dining room, kitchen breakfast room, utility room and cloakroom. The first floor accommodation comprises landing, main suite with dressing area and en-suite shower room, two further double bedrooms, a single bedroom and family bathroom.

The property further benefits from driveway parking for two cars, a double garage with up and over doors to the front, side access door, power and lighting, an enclosed rear garden, gas central heating and double glazing.

The landlord would prefer a longer term let. Pets are not considered

All room measurements are approx.

Lounge: 6.59m x 3.61m

Conservatory: 3.61m x 2.99m

Dining Room: 3.49m x 3.23m

Kitchen Breakfast Room: 2.76m x 4.92m

Utility Room: 2.76m x 1.41m

Bedroom One: 3.43m x 4.05m

Dressing Room: 1.59m x 2.28m

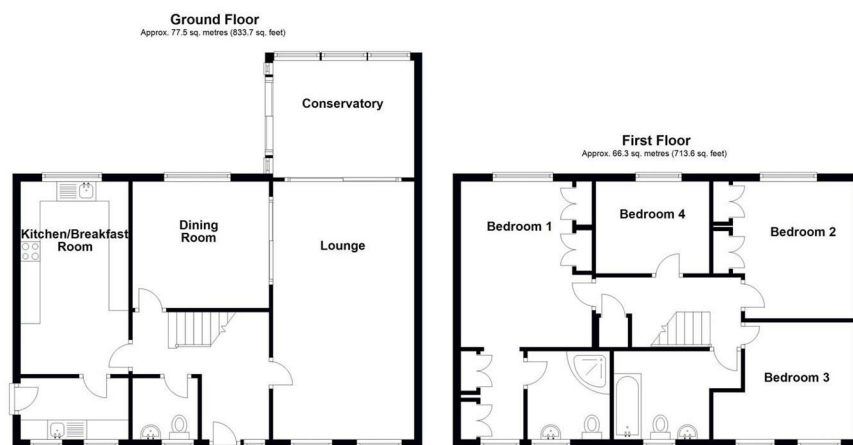
En-suite Shower Room: 2.25m x 2.10m

Bedroom Two: 3.62m x 3.5m

Bedroom Three: 2.84m x 2.87m ext 3.66m

Bedroom Four: 2.90m x 2.35m

SITUATION



Directions

Office 4 Stockley Farm, Stockley, Wiltshire, SN11 0NT

Tel: 01225 839050 Email: hello@blueleafproperty.co.uk <https://www.blueleafproperty.co.uk>