



TO LET

128 Linnet Lane, Melksham, Wiltshire, SN12 7FU

£1,600 Per Month



- Four bedroom detached family home
- Enclosed garden
- Available February 2026
- Council Tax - E (Wiltshire Council)
- Garage & Parking
- Pets maybe considered on application
- EPC - C

Discover Melksham: A Charming Wiltshire Town with Excellent Connectivity

Nestled along the banks of the River Avon, Melksham is a market town that blends historical charm with modern conveniences. It offers a welcoming community atmosphere complemented by a range of amenities.

Local Amenities and Lifestyle

Melksham boasts a high street filled with independent shops, cafes, and traditional pubs. For leisure and recreation, the town offers several parks and green spaces, including King George V Playing Field, which features a playground, skate park and is home to Melksham Parkrun. The nearby Melksham Community Campus enhances the town's leisure offerings with swimming pool, sports hall, gym and cafe.

THE PROPERTY

Welcome to 128 Linnet Lane, Melksham a four bedroom detached family home with garage and parking.

The ground floor accommodation comprises entrance hall with under stairs storage cupboard, dining room, lounge with patio doors onto the rear garden, cloakroom, kitchen / family room with patio doors onto the rear garden and utility room with door onto the rear garden. The first floor accommodation comprises landing with storage cupboard, bedroom one with en-suite shower room, two further double bedrooms and good size single bedroom and family bathroom.

The property further benefits from driveway parking, a single garage with power, lighting and eaves storage, a good size enclosed rear garden with patio area and gated side access, upvc double glazing throughout and gas central heating.

The landlord is looking to let the property for an initial one year period and may extend longer thereafter and may consider pets on application.

All room measurements are approx;

Lounge: 3.44m x 6.56m

Dining Room: 3.43m x 3.44m

Kitchen / Family Room: 3.75m x 2.86m / 3.32m x 2.45m

Utility Room: 2.41m x 1.61m

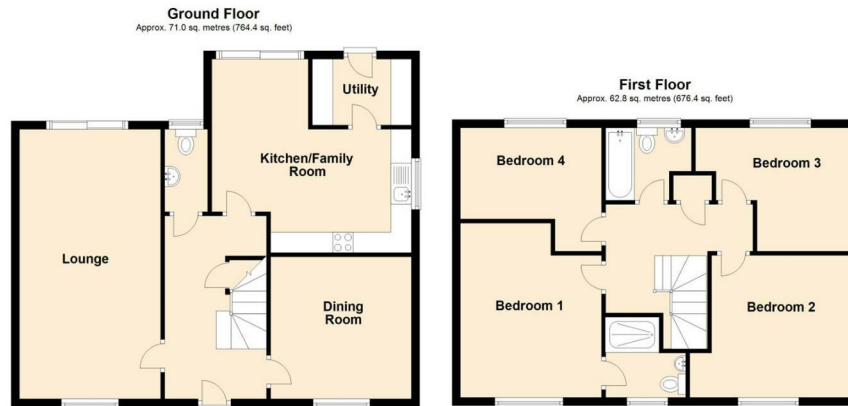
Bedroom One: 3.39m x 4.25m

Bedroom Two: 3.53m x 3.43m

Bedroom Three: 2.92m x 3.82m

Bedroom Four: 3.42m x 2.21m

SITUATION



Directions

Office 4 Stockley Farm, Stockley, Wiltshire, SN11 0NT

Tel: 01225 839050 Email: hello@blueleafproperty.co.uk <https://www.blueleafproperty.co.uk>