



TO LET

23 Charlotte Court King Edward Close, Calne, SN11 9RG

£180,000



- Chain Free
- One Bedroom
- Parking
- Ground Floor Flat
- Enclosed Patio Garden

Discover Calne: A Historic Wiltshire Town with Scenic Charm and Great Connectivity

Situated in the beautiful North Wiltshire countryside, Calne is a market town that combines rich history with modern-day living. With a sense of community and range of local amenities, Calne is an ideal place to call home.

Local Amenities and Lifestyle

Calne offers a town centre featuring independent shops, cafes, and traditional pubs. There's no shortage of green space, with the popular Castlefields Park and The Recreation Ground offering relaxing outdoor areas for picnics, dog walks and family time. For fitness and leisure, Calne Leisure Centre provides a gym, swimming pool and fitness classes for all ages.

THE PROPERTY

A one bedroom ground floor apartment with a private garden, which would make an ideal home for a first time buyer or as an investment property.

Accommodation:

Front door leading straight into:

Living Room

With window to front, storage cupboard, radiator and French doors into the garden

Kitchen

Range of base and wall units, sink, oven and hob, space for washing machine and space for fridge/freezer. Window to front.

Bedroom

Window to front, radiator, wardrobe area with window overlooking the garden

Ensuite

Window to front, shower cubicle, wc and sink

Outside

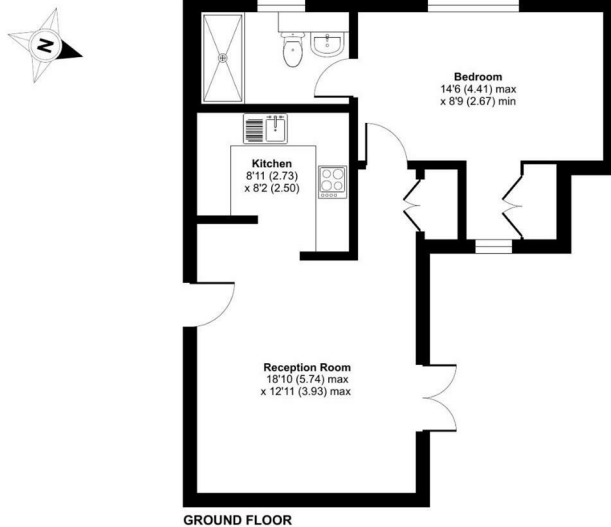
The enclosed rear garden is laid to patio providing a perfect place for outside dining. There is a gate for rear access.

There is one parking space to the side of the property along with further visitors parking.

SITUATION

Charlotte Court, King Edward Close, Calne, SN11

Approximate Area = 500 sq ft / 46.4 sq m
For identification only - Not to scale



GROUND FLOOR

Floor plan produced in accordance with RICS Property Measurement 2nd Edition, incorporating International Property Measurement Standards (IPMS2 Residential). © richcom 2024. Produced for Forest Lettings & Property Management. REF: 1345618

Directions

Office 4 Stockley Farm, Stockley, Wiltshire, SN11 0NT

Tel: 01225 839050 Email: hello@blueleafproperty.co.uk <https://www.blueleafproperty.co.uk>